

“Talking Back: the Audience in Dialogue”
April 23 - July 6 2014

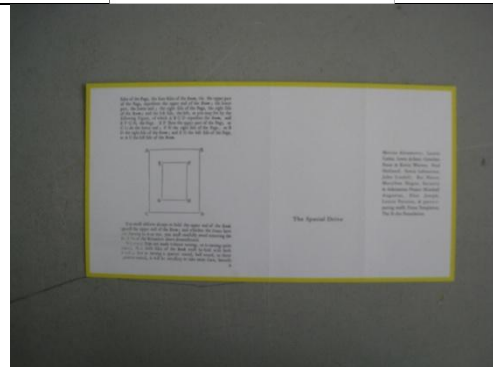
5th Floor Resource Center



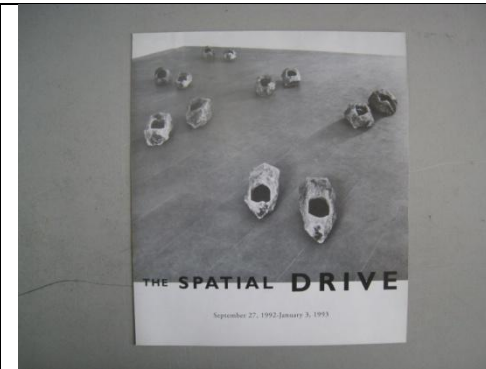
Video documentation of Laurie Parsons' *Security & Admissions project*, part of: “The Spatial Drive” (1993).
 Digital video
 Runtime 2 hours 15 min
 Courtesy New Museum, New York



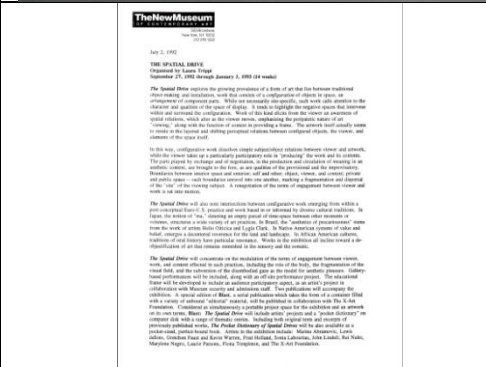
Security & Admissions project,
 part of: “The Spatial Drive”
 Press release, 1993
 8 ½ x 11 in
 Courtesy New Museum, New York



Security & Admissions project,
 part of: “The Spatial Drive”
 Opening invitation for “The Spatial Drive”
 5 x 9 ½ in
 Courtesy New Museum, New York



Security & Admissions project,
 part of: “The Spatial Drive”
 Exhibition brochure for “The Spatial Drive”
 8 ½ x 9 ¾ in
 Courtesy New Museum, New York



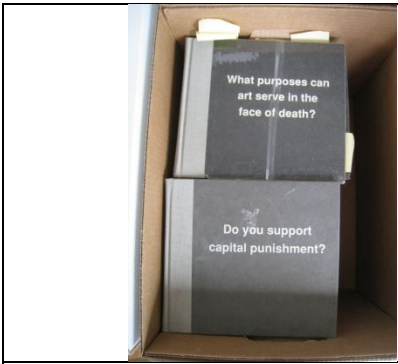
Security & Admissions project,
 part of: “The Spatial Drive”
 Correspondence, 1993
 8 ½ x 11 in
 Courtesy New Museum, New York



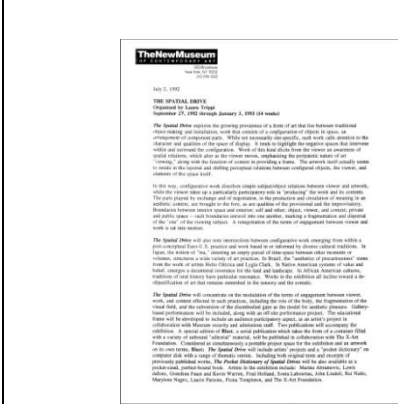
Security & Admissions project,
 part of: “The Spatial Drive”
 Photograph of guard interacting
 with viewers, 1993
 8 x 10 in
 Courtesy New Museum, New York



Security & Admissions project,
 part of: “The Spatial Drive”
 Photograph of opening for “The Spatial Drive”, 1993
 8 x 10 in
 Courtesy New Museum, New York



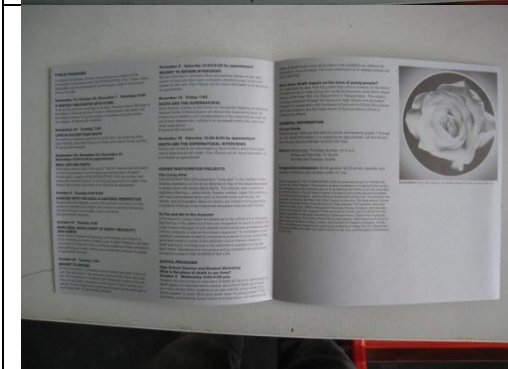
“The Interrupted Life”
Guestbooks (16), 1991
7.25 x 8.25 x 1 in
Courtesy New Museum, New York



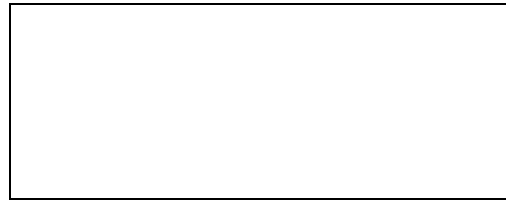
“The Interrupted Life”
Press release for “The Interrupted Life,” 1991
8 ½ x 11 in
Courtesy New Museum, New York



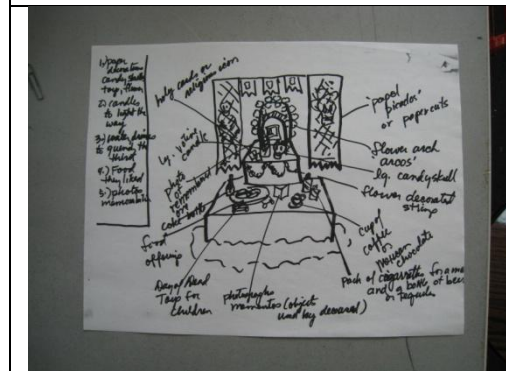
“The Interrupted Life”
Exhibition catalog for “The Interrupted Life,” 1991
9 ½ x 9 ¾ in
Courtesy New Museum, New York



“The Interrupted Life”
Brochure and Viewer Participation Project questionnaire for “The Interrupted Life,” 1991
9 x 9 in
Courtesy New Museum, New York



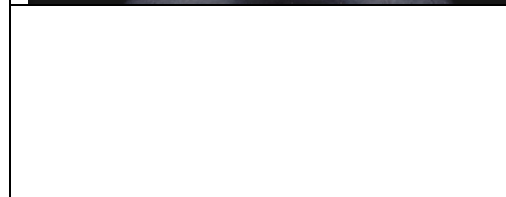
“The Interrupted Life”
New Museum newsletter, 1991
Courtesy New Museum, New York



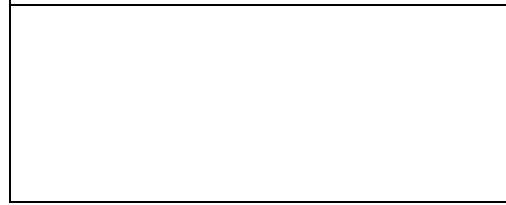
“The Interrupted Life”
Amalia Mesa-Bains
Artist drawing for *The Living Altar*, 1991
8 ½ x 11 in
Courtesy New Museum, New York



The Interrupted Life
Installation photographs of *The Living Altar*, 1991
(2 photographs)
8 x 10 in
Courtesy New Museum, New York



“Day Without Art”
Correspondence, 1991
8 ½ x 11 in
Courtesy New Museum, New York

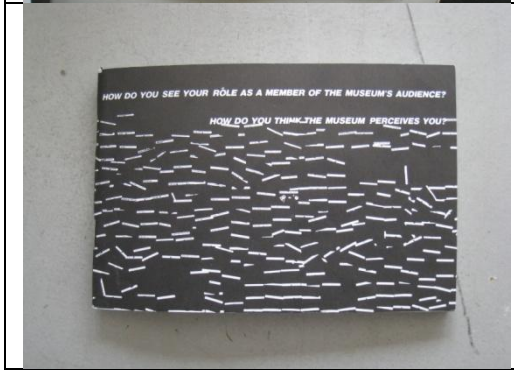


Day Without Art
Flyer, 1991
8 ½ x 11 in
Courtesy New Museum, New York

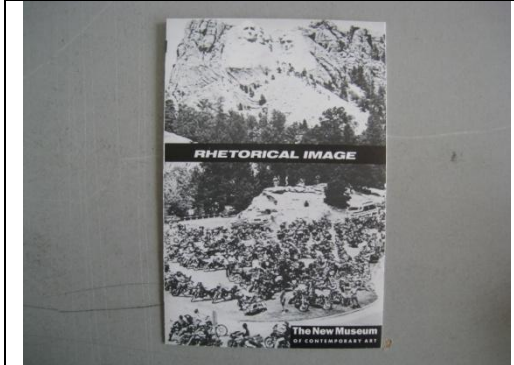
Day Without Art
Press release for "Day Without Art", 1991
8 ½ x 11 in
Courtesy New Museum, New York



"Rhetorical Image"
Exhibition catalog, 1992
9 x 12 in
Courtesy New Museum, New York

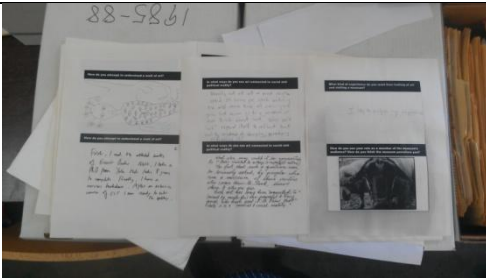


Rhetorical Image
Rhetorical Image Resource Room
publication, 1992
4 x 6 in
Courtesy New Museum, New York



Rhetorical Image
Exhibition brochure, 1992
4 x 6 in (folded)
Courtesy New Museum, New York

Rhetorical Image
Exhibition postcard, 1992
Courtesy New Museum, New York

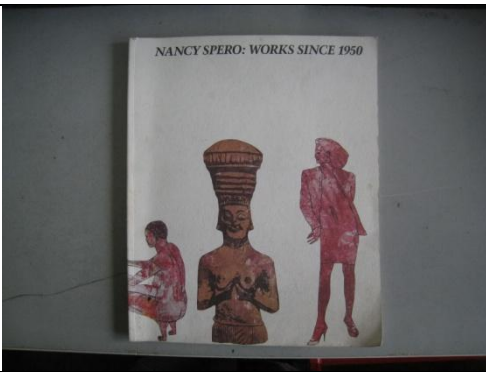


"Rhetorical Image
Photocopies of Rhetorical Image
Resource Room viewer response
postcards, 1992
8 ½ x 11 in
Courtesy New Museum, New York



Rhetorical Image
Installation photograph of
Rhetorical Image Resource Room,
1992
8 x 10 in
Courtesy New Museum, New York

Nancy Spero
Correspondence, 1989
8 ½ x 11 in
Courtesy New Museum, New York



Nancy Spero
Exhibition catalog for "Responses
to Nancy Spero: Works Since
1950,"
10 x 12 ¼ in
Courtesy New Museum, New York



Nancy Spero
"Responses to Nancy Spero:
Works Since 1950," 1989
Digital video (transfer from ¾" U-
matic). Runtime 17 min.
Courtesy New Museum, New York



Nancy Spero
"Nancy Spero: Works Since 1950"
brochure
Courtesy New Museum, New York