

NEW
235 BOWERY
NEW YORK NY
10002 USA
MUSEUM

TEL +1 212.219.1222.
FAX +1 212.431.5326.
newmuseum.org

FOR IMMEDIATE RELEASE

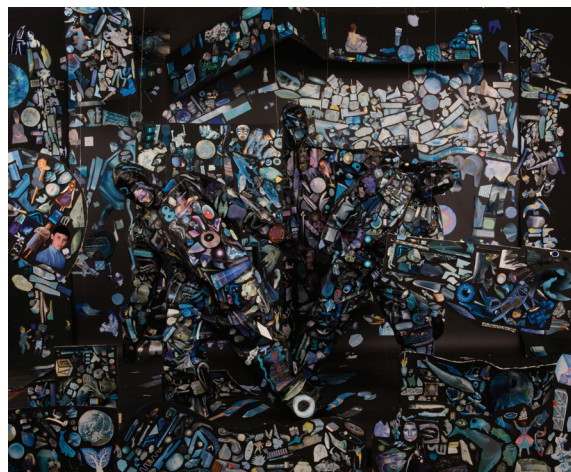
December 14, 2011

PRESS CONTACTS:

Gabriel Einsohn, Communications Director
press@newmuseum.org
Andrea Schwan, Andrea Schwan Inc.
info@andreaschwan.com

**‘Stowaways’ Series to feature Brian Bress’s *Status Report*
January 18 – March 25, 2012**

The New Museum is pleased to announce the latest presentation in its ‘Stowaways’ series, the New York premier of Brian Bress’s *Status Report* (2009). In Bress’s low-tech video, humorous characters, all played by the artist, struggle with interpersonal relationships, the pursuit of intended goals, and the desire to communicate. Manipulating pictorial and sculptural conventions through fantastically hand-crafted sets and costumes that combine drawing, painting, and collage, Bress creates a disjunctive world where spaces of imagination and representation compete for equal footing. Brian Bress (b. 1975) lives and works in Los Angeles. His videos have been shown at ICA, Philadelphia; LAX Art, Los Angeles; Diverse Works, Houston; University of South Florida Contemporary Art Museum, Tampa; and Parrish Art Museum, South Hampton. His work was included in the comprehensive survey exhibition “California Video: Artists and Histories” presented at the Getty Museum in 2008. This is Bress’s first New York museum presentation. The ‘Stowaways’ series is a constellation of episodic projects and spontaneous interventions in spaces throughout the New Museum. “Brian Bress: Status Report” is organized by Jenny Moore, Assistant Curator, and presented in the New Museum Theater.



Brian Bress, Still from *Status Report*, 2009. Single-channel video, color, sound, 18 minutes, 40 seconds. Courtesy of the artist and Cherry and Martin, Los Angeles.

View a schedule of all upcoming exhibitions at the New Museum [here](#).

About the New Museum

The New Museum is the only museum in New York City exclusively devoted to contemporary art. Founded in 1977, the New Museum was conceived as a center for exhibitions, information, and documentation about living artists from around the world. From its beginnings as a one-room office on Hudson Street to the inauguration of its first freestanding, dedicated building on the Bowery designed by SANAA in 2007, the New Museum continues to be a place of ongoing experimentation and a hub of new art and new ideas.

###