

Nathaniel Mellors: Progressive Rocks



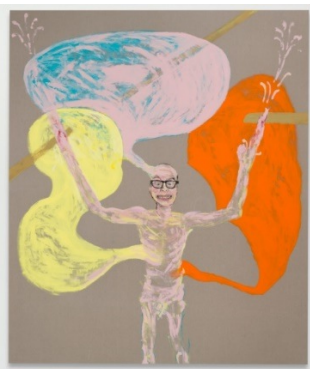
Neanderthal Venus, 2014
 Unique photographic print
 56 3/4 x 41 1/4 in (144.1 x 104.8 cm)
 Courtesy the artist; the Box, Los Angeles; Matt's Gallery, London; Monitor, Rome; and Stigter van Doesburg, Amsterdam



The Sophisticated Neanderthal Interview, 2014
 35mm film transferred to HD video, sound, color;
 23:19 min
 Commissioned by the Hammer Museum with the support of The Mondriaan Fund and Temple Bar Gallery, Dublin
 Courtesy the artist; the Box, Los Angeles; Matt's Gallery, London; Monitor, Rome; and Stigter van Doesburg, Amsterdam



Shakespeare With Teeth (latent, pink-white), 2016
 Polyester-cast resin with embedded drinking straws and dentures on a powder-coated and welded steel stand
 61 1/2 x 12 x 17 in (156.2 x 30.5 x 43.2 cm)
 Courtesy the artist; the Box, Los Angeles; Matt's Gallery, London; Monitor, Rome; and Stigter van Doesburg, Amsterdam



New Age Crucifixion, 2017
 Acrylic on linen
 90 x 76 x 6 1/4 in (228.6 x 193 x 15.9 cm)
 Courtesy the artist; the Box, Los Angeles; Matt's Gallery, London; Monitor, Rome; and Stigter van Doesburg, Amsterdam



Neanderthal Container, 2015
HD video, sound, color; 20:32 min
Commissioned by Taipei Biennial 2014
Courtesy the artist; the Box, Los Angeles; Matt's Gallery, London; Monitor, Rome; and Stigter van Doesburg, Amsterdam



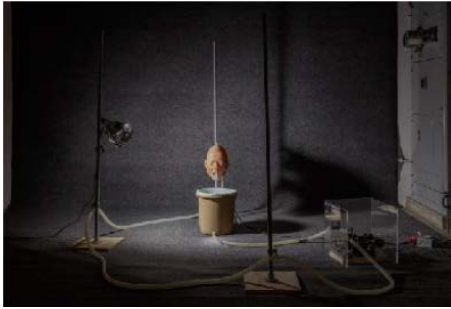
Neanderthal Container: Animatronic Prelaps, 2015
Painted silicone, steel, wood, and animatronic mechanisms
Dimensions variable
Courtesy the artist; the Box, Los Angeles; Matt's Gallery, London; Monitor, Rome; and Stigter van Doesburg, Amsterdam



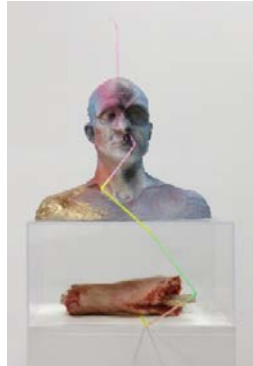
Original Crucifixion, 2017
Acrylic and floor paint, sponge, polystyrene, and spray paint on canvas
100 x 85 x 6 1/4 in (254 x 215.9 x 15.9 cm)
Courtesy the artist; the Box, Los Angeles; Matt's Gallery, London; Monitor, Rome; and Stigter van Doesburg, Amsterdam



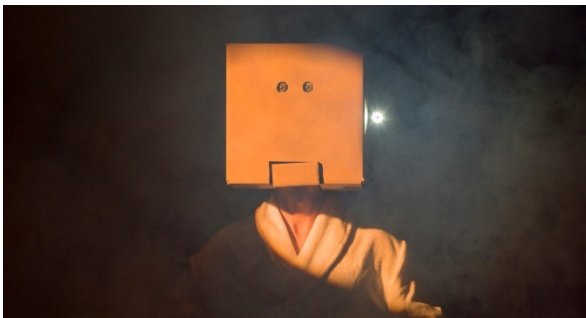
Ourhouse, Episode -1: Time, 2015–16
HD video, sound, color; 60 min
Commissioned by the Harris Museum and Art Gallery, Preston, UK, and the National Gallery of Victoria, Melbourne, and funded by the Contemporary Art Society, The Mondriaan Fund, and Arts Council England
Supported by University of Central Lancashire
Courtesy the artist; the Box, Los Angeles; Matt's Gallery, London; Monitor, Rome; and Stigter van Doesburg, Amsterdam



The Vomiter (Ourhouse), 2010
Painted silicone, paper pulp, bucket, silicone hose, peristaltic pump, Perspex, steel, wood, and animatronic mechanism
Dimensions variable
Courtesy the artist; the Box, Los Angeles; Matt's Gallery, London; Monitor, Rome; and Stigter van Doesburg, Amsterdam



Reliquary Reliquary, 2016
Resin, drinking straws, paint, polymerized plaster, silicone, hair, Perspex, and wood
70 x 22 x 21 1/2 in (177.8 x 55.9 x 54.6 cm)
Courtesy the artist; the Box, Los Angeles; Matt's Gallery, London; Monitor, Rome; and Stigter van Doesburg, Amsterdam



Nathaniel Mellors and Erkkä Nissinen
The Aalto Natives (Floored Version), 2017–18
Animatronic sculpture: steel, wood, and silicone
Three-channel HD video, sound, color; 53:34 min
The Aalto Natives was originally commissioned by Frame Finland for the 2017 Venice Biennale with the generous support of The Mondriaan Fund and the Rijksakademie van beeldende kunsten, Amsterdam
Courtesy the artist; the Box, Los Angeles; Matt's Gallery, London; Monitor, Rome; and Stigter van Doesburg, Amsterdam