

"Nari Ward: We the People"
February 13–May 26, 2019

SECOND FLOOR



Hunger Cradle, 1996
Yarn, rope, and found materials
Dimensions variable
Private collection



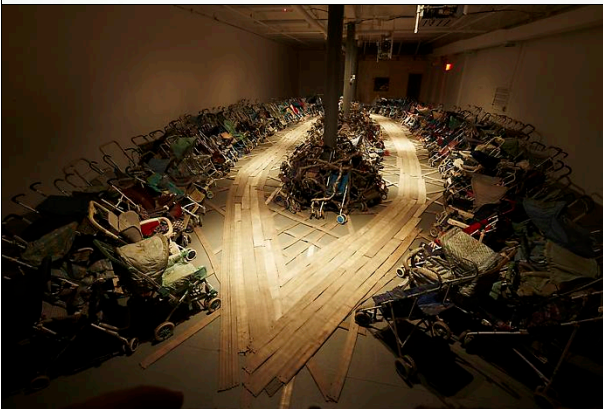
Ella, 1993–2014
Ink, wooden dominos, polymer, graphite,
pigment, and steel cut tacks on wood panel
21 x 15 in (53.3 x 38.1 cm)
Private collection



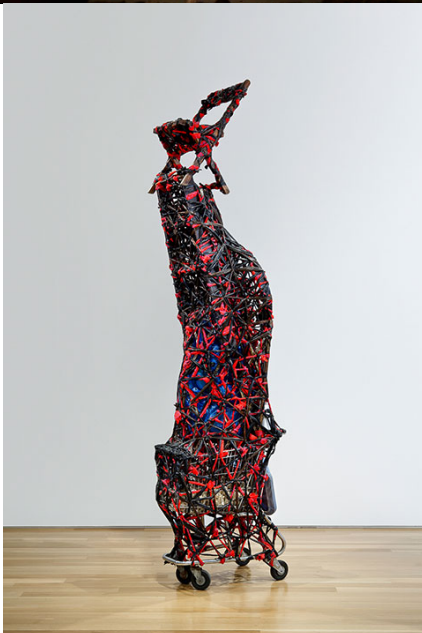
Miles, 1993–2014
Ink, wooden dominos, polymer, graphite,
pigment, and steel cut tacks on wood panel
21 x 15 in (53.3 x 38.1 cm)
Private collection



Den, 1999
Wood, chain-link fence, metal pole, tacks,
rug, and wooden furniture legs
24 1/2 x 44 1/2 x 93 1/2 in (62.2 x 113 x 237.5
cm)
Walker Art Center, T.B. Walker Acquisition
Fund, 2002



Amazing Grace, 1993
Baby strollers, fire hose, and audio
component
Dimensions variable
Private collection



Savior, 1996
Shopping cart, plastic garbage bags, cloth,
bottles, metal fence, earth, wheel, mirror,
chair, and clocks
128 x 36 x 23 in (325.1 x 91.4 x 58.4 cm)
Institute of Contemporary Art, Boston;
Purchased through the generosity of an
anonymous donor



Pushing Savior, 1996

Single-channel video, sound, color; 7:01 min
 Filmed by Marcel Odenbach
 Courtesy the artist; Lehmann Maupin, New York, Hong Kong, and Seoul; and Galleria Continua, San Gimignano, Beijing, Les Moulins, and Havana



Trophy, 1993

Baby stroller, found objects, sugar, and Tropical Fantasy soda
 Dimensions variable
 Courtesy Nicole Klagsbrun Gallery



Sky Juice, 1993

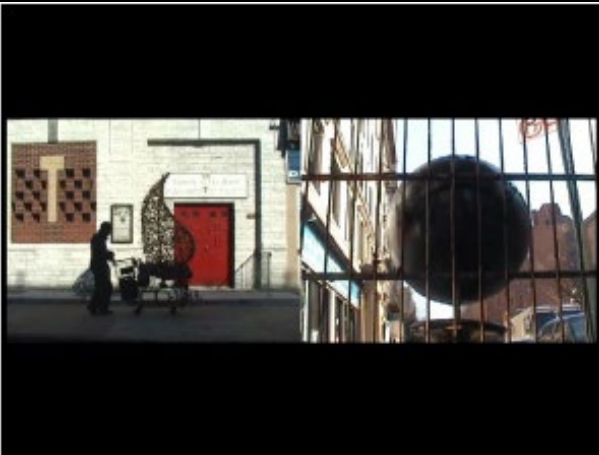
Umbrella, iron fence, cement, textiles, plastic soda bottles, photographs, Tropical Fantasy soda, and sugar
 106 x 72 x 95 in (269.2 x 182.9 x 241.3 cm)
 Whitney Museum of American Art, Gift of Peter Norton, 2001.263A-B



Blue Window-Brick Vine, 1993
Mixed mediums
91 x 96 x 37 1/2 in (231.1 x 243.8 x 95.3 cm)
Columbus Museum of Art; Museum
Purchase, Westwater Fund



Crusader, 2005
Plastic bags, metal, shopping cart, trophy
elements, bitumen, chandelier, and plastic
containers
110 x 51 x 52 in (279.4 x 129.5 x 132 cm)
Brooklyn Museum; Purchased with funds
given by Giulia Borghese, 2008.52.1a-b



Crusader, 2006
Single-channel video, sound, color; 38 min
Filmed by Zachary Fabri
Collection Brooklyn Museum; Purchased
with funds given by Giulia Borghese,
2008.52.2



Iron Heavens, 1995

Oven pans, ironed sterilized cotton, and
burned wooden bats

140 x 148 x 48 in (355.6 x 375.9 x 121.9 cm)

Collection Jeffrey Deitch

THIRD FLOOR



We the People, 2011
Shoelaces
96 x 324 in (243.8 x 823 cm)
Speed Art Museum; Gift of Speed
Contemporary



Ground (In Progress), 2015
Copper, brick, and darkening patina
2 1/2 x 144 x 144 in (6.4 x 365.8 x 365.8 cm)
Collection Jorge Jellicoe



Breathing Panel: Oriented Center, 2015
Oak, copper sheet, copper nails, and
darkening patina
96 x 120 x 2 1/2 in (243.8 x 304.8 x 6.4 cm)
Collection Oya and Bülent Eczacıbaşı



Breathing Panel: Oriented Right, 2015
Oak, copper sheet, copper nails, and darkening patina
96 x 120 x 2 1/2 in (243.8 x 304.8 x 6.4 cm)
Collection Allison and Larry Berg
Courtesy the artist and Lehmann Maupin, New York, Hong Kong, and Seoul



Anchoring Escapement; Fang, 2018
Grandfather clock case, copper sheet with patina, copper nails, and African statues
78 x 20 x 11 1/2 in (198.1 x 50.8 x 29.2 cm)
Courtesy the artist and Lehmann Maupin, New York, Hong Kong, and Seoul



Untold, 2013

Bottles, paper sheets, metal, and wire
 196 7/8 x 141 3/4 x 59 in (500 x 360 x 150 cm)
 Courtesy the artist; Lehmann Maupin, New York, Hong Kong, and Seoul; and Galleria Continua, San Gimignano, Beijing, Les Moulins, and Havana



Exodus, 1993

Mixed mediums
 Dimensions variable
 Collection Jeffrey Deitch



Super Stud Salt Table, 1995/2019

Metal studs, Lehman Collection book pages, Sensormatics alarms, salt, codfish, plantains, and plastic
 Dimensions variable
 Collection the artist; Lehmann Maupin, New York, Hong Kong, and Seoul; and Galleria Continua, San Gimignano, Beijing, Les Moulins, and Havana



Glory, 2004

Oil barrel, fluorescent and ultraviolet tubes, computer parts, DVD, parrot, audio recording, Plexiglas, fan, camera casing elements, paint cans, cement, towels, and rubber roofing membrane

Dimensions variable

Courtesy the artist; Lehmann Maupin, New York, Hong Kong, and Seoul; and Galleria Continua, San Gimignano, Beijing, Les Moulins, and Havana



Naturalization Drawing Table, 2004

Plexiglas, crenellation table, and INS naturalization application

Table: 45 x 51 x 99 in (114.3 x 129.5 x 251.5 cm)

Chair: 34 x 22 x 21 in (86.4 x 55.9 x 53.3 cm)

Overall: dimensions variable

Courtesy the artist; Lehmann Maupin, New York, Hong Kong, and Seoul; and Galleria Continua, San Gimignano, Beijing, Les Moulins, and Havana



Escape Velocity Blue, from the Breathing Circles series, 2018

Oak, copper sheet, copper nails, and darkening patina

2 in h x 49 1/2 in d (5.1 cm h x 125.7 cm d)

THE EKARD COLLECTION

Courtesy the artist and Galleria Continua, San Gimignano, Beijing, Les Moulins, and Havana

| | |
|---|--|
|  | <p><i>Nadir</i>, from the <i>Breathing Circles</i> series, 2018 Oak, copper sheet, copper nails, and darkening patina 2 in h x 49 1/2 in d (5.1 cm h x 125.7 cm d) Private collection Courtesy the artist and Galleria Continua, San Gimignano, Beijing, Les Moulins, and Havana</p> |
|  | <p><i>Mare</i>, from the <i>Breathing Circles</i> series, 2018 Oak, copper sheet, copper nails, and darkening patina 2 in h x 49 1/2 in d (5.1 cm h x 125.7 cm d) Collection Gerald and Jody Lippes</p> |
|  | <p><i>Resonance</i>, from the <i>Breathing Circles</i> series, 2018 Oak, copper sheet, copper nails, and darkening patina 2 in h x 49 1/2 in d (5.1 cm h x 125.7 cm d) Collection Erica Gervais and Ted Pappendick</p> |



Spellbound, 2015

Piano, used keys, Spanish moss, light, and audio and video elements; 9:03 min

52 1/2 x 60 x 28 in (133.4 x 152.4 x 71.1 cm)

Filmed by Steven Rose

Audio by Austin Nelson

Commissioned by SCAD Museum of Art

Courtesy the artist; Lehmann Maupin, New

York, Hong Kong, and Seoul; and Galleria

Continua, San Gimignano, Beijing, Les

Moulins, and Havana

| NICHE | |
|---|---|
|  | <p><i>Canned Smiles, 2013</i> Two cans, labels, mirrored stainless-steel disks, and smiles 1 1/2 in h x 3 1/4 in d (3.8 cm h x 8.3 cm d) Courtesy the artist; Lehmann Maupin, New York, Hong Kong, and Seoul; and Galleria Continua, San Gimignano, Beijing, Les Moulins, and Havana</p> |
| | |
| SHAFT | |
| | <p><i>Take My Hand, 2019</i> Hydrocal medallions, shimmerlite fabric, lights, and audio; 3:09 min Dimensions variable Courtesy the artist; Lehmann Maupin, New York, Hong Kong, and Seoul; and Galleria Continua, San Gimignano, Beijing, Les Moulins, and Havana</p> |
| | <p><i>King Mission, 2019</i> Hydrocal medallion 14 x 16 in (35.6 x 40.6 cm) Courtesy the artist</p> |
| | |

FOURTH FLOOR

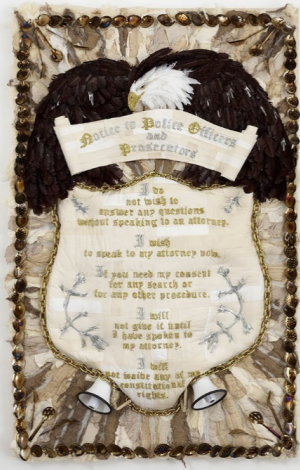


T.P. Reign Bow, 2012

Wood, blue tarp, brass grommets, zippers, human hair, and taxidermy fox

224 x 156 x 270 in (569 x 396.2 x 685.8 cm)

Courtesy the artist; Lehmann Maupin, New York, Hong Kong, and Seoul; and Galleria Continua, San Gimignano, Beijing, Les Moulins, and Havana



Homeland Sweet Homeland, 2012

Cloth, plastic, megaphones, razor wire, feathers, chains, and silver spoons

96 x 59 3/4 x 10 in (243.8 x 151.8 x 25.4 cm)

Produced in collaboration with the Fabric Workshop and Museum, Philadelphia
Pérez Art Museum Miami; Museum purchase with funds provided by Jorge M. Pérez, the John S. and James L. Knight Foundation, and the PAMM Ambassadors for African American Art

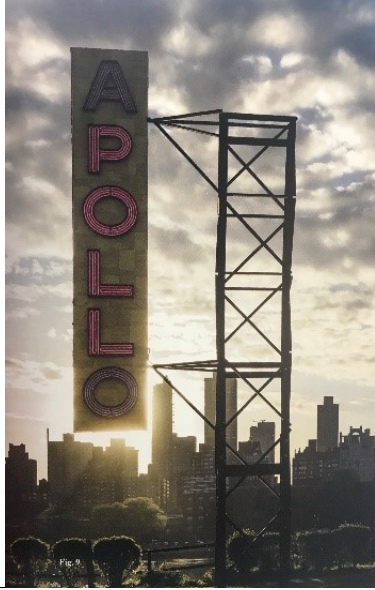


Carpet Angel, 1992

Carpet, plastic bags, plastic bottles, carpet runner, springs, wood screws, and rope

230 x 238 x 36 in (584.2 x 604.5 x 91.4 cm)

Museum of Contemporary Art, Los Angeles; Gift of Jennifer McSweeney in honor of Joan "Penny" McCall



Apollo/Poll, 2017

Steel, wood, vinyl, and LED lights
 360 x 144 x 48 in (914.4 x 365.8 x 121.9 cm)
 Commissioned by Socrates Sculpture Park
 Courtesy the artist; Lehmann Maupin, New York, Hong Kong, and Seoul; and Galleria Continua, San Gimignano, Beijing, Les Moulins, and Havana



Buying Shoes, 2010

Stencil ink and psychological study card on paper
 16 x 20 in (40.6 x 50.8 cm)
 Collection Noel E.D. Kirnon



Safety First, 2010

Stencil ink and psychological study card on paper
 20 x 16 in (50.8 x 40.6 cm)
 Collection Michael Hoeh, New York



Television Time, 2010
 Stencil ink and psychological study card on
 paper
 16 x 20 in (40.6 x 50.8 cm)
 Collection Noel E.D. Kirnon



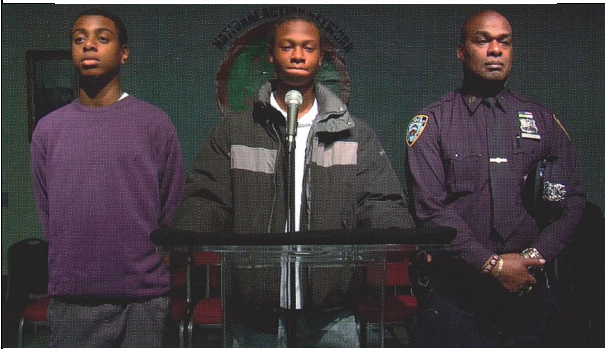
Hurry Up!, 2010
 Stencil ink and psychological study card on
 paper
 16 x 20 in (40.6 x 50.8 cm)
 Collection John S. Wotowicz



Building Project, 2010
 Stencil ink and psychological study card on
 paper
 20 x 16 in (50.8 x 40.6 cm)
 Collection Michael Hoeh, New York



The new dress, 2010
 Stencil ink and psychological study card on paper
 16 x 20 in (40.6 x 50.8 cm)
 Private collection



Father and Sons, 2010
 Digital video projection, sound, color; 3:52 min
 Filmed by Scott Sinkler
 Courtesy the artist; Lehmann Maupin, New York, Hong Kong, and Seoul; and Galleria Continua, San Gimignano, Beijing, Les Moulins, and Havana