

Mary Heilmann: To Be Someone - Illustrated Checklist

**When reproducing images, please take note of the irregular canvas shape for the following works: *Chemical Billy*, *Fresno*, *Chartreuse*, *Green Queen*, *Horizon*, *Interval*, *Lupe*, *Miramar*, *Sea of Joy*, *Tourmaline* and *Woody's Truck Stop*

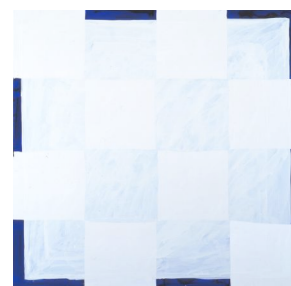
LOBBY GALLERY

Veil, 1989

Oil on canvas

48 x 48 inches (122 x 122 cm)

Collection Penny Cooper and Rena Rosenwasser,
Berkeley, California



Sea Wall, 1986

Oil on canvas

60 x 42 inches (152.4 x 106.7 cm)

Collection the artist

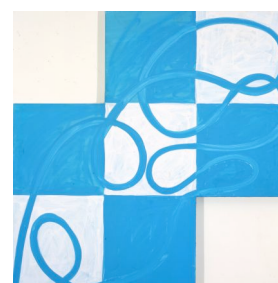


Lupe, 1987

Oil on canvas

54 x 54 inches (137.2 x 137.2 cm)

Collection the artist

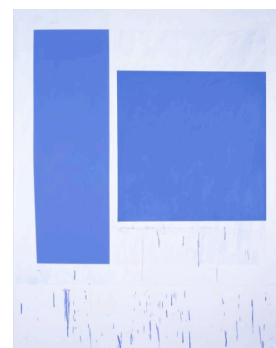


| *Blue and White Squares*, 1997

Oil on canvas

50 x 40 inches (127 x 101.6 cm)

Collection Matthew and Jennifer Harris, London

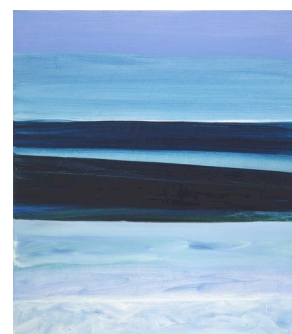


| *Capistrano*, 1994

Oil on canvas

34 x 30 inches (86.4 x 76.2 cm)

Collection Broido Family, Baltimore, Chicago, Washington DC

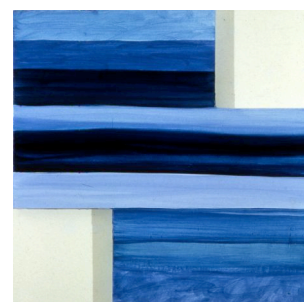


| *Miramar*, 1994

Oil on canvas

36-3/8 x 36-3/8 x 1-3/8 inches (92.5 x 92.5 x 3.5 cm)

Hauser & Wirth Collection, Switzerland

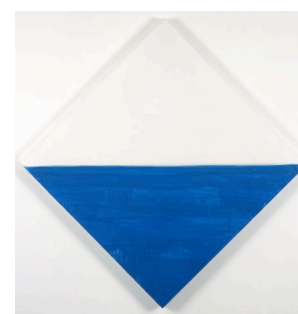


| *Horizon*, 1991

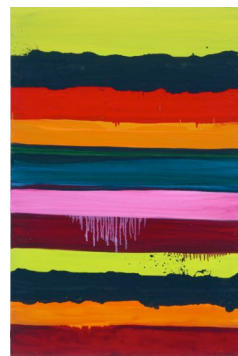
Oil on canvas

36 x 36 inches (91.4 x 91.4 cm)

Collection Marilyn Minter and Bill Miller, New York



Carmelita, 2004
 Oil on canvas
 42 x 28 x 1-1/2 inches (106.7 x 71.1 x 3.8 cm)
 Private collection, Switzerland



Surfing on Acid, 2005
 Oil on canvas
 60 x 48 in. (152.4 x 122 cm)
 Collection the Orange County Museum of Art, Newport Beach, California; Museum purchase with funds provided through prior gift of Lois Outerbridge



Malibu, 1970
 Acrylic gel on unstretched canvas
 64-1/4 x 55 inches (163.2 x 140 cm)
 Collection Thomas Solomon, Los Angeles



Silver Bench, 2008
 Glazed Tiles, MDF, and Wood
 Courtesy the Artist



Chartreuse Table, 2008
 Painted Wood
 Courtesy the Artist



Flying Saucer Project:
 Mary Heilmann and Steve Keister
 With Rachel Bleiweiss-Sande

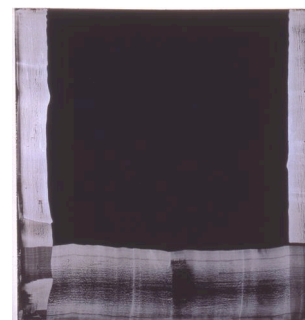


2nd FLOOR GALLERY

Corona Borealis, 1970
 Acrylic on unstretched canvas
 46 x 46-3/4 inches (116.8 x 118.7 cm)
 Collection the artist



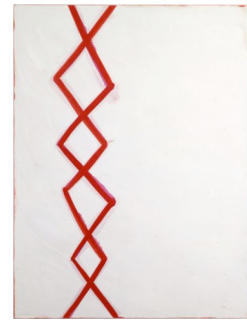
The Big Black Mirror, 1975
 Oil on canvas
 58 5/8 x 58 x 2 1/2 inches (149 x 147.3 x 6.5 cm)
 Hauser & Wirth Collection, Switzerland



Seam, 1990
 Oil on canvas

40 x 30 inches (101.6 x 76.2 cm)

Collection Marilyn Minter and Bill Miller, New York



5

Chinatown, 1976

Acrylic on canvas (diptych)

83-1/2 x 108 x 2-1/2 inches (212.1 x 274.3 x 6.4 cm)

Hauser & Wirth Collection, Switzerland

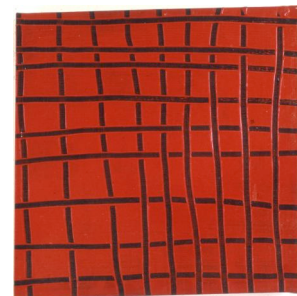


Little 9 x 9, 1973

Acrylic on canvas

22 x 22 x 1-3/4 inches (56 x 56 x 4.5 cm)

Hauser & Wirth Collection, Switzerland



Grape Vent (The 4th Jalousie, Purple), 1975

Oil on canvas

58 1/2 x 38 1/2 inches (148.6 x 97.8 cm)

Collection Diane and David Waldman,
MD, Rancho Mirage, California



French Screen, 1978



5

Acrylic on canvas
 60 x 73-1/2 inches (152.4 x 186.7 cm)
 Whitney Museum of American Art, New York.
 Gift of Will Pilcher 95.220

Red, Yellow and Blue Knot, 1979

Acrylic on canvas
 18-7/8 x 12 x 1-3/4 inches (47.6 x 30.5 x 4.4 cm)
 Hauser & Wirth Collection, Switzerland



Shoulder to Shoulder, 1989

Acrylic on canvas
 39 x 29 inches (99.1 x 73.7 cm)
 Collection Ann and Mark Jaime, San Rafael, California



Chartreuse, 1987

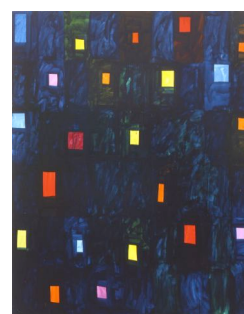
Acrylic and watercolor on wood panel (diptych)
 Hauser & Wirth Collection, Switzerland



Lola, 1996
 Oil on canvas
 78 x 58 inches (198.1 x 147.3 cm)
 Courtesy Hausler Contemporary, Munich



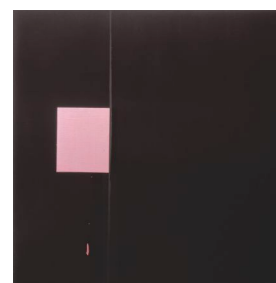
Neo Noir, 1998
 Oil on canvas
 75 x 60 inches (190.5 x 152.4 cm)
 Collection Edward Israel, Los Angeles



The Third Man, 1999
 Oil on canvas
 75 x 60 inches (191 x 152.4 cm)
 Collection Rena Conti and Ivan Moskowitz, Chicago



The End of the All Night Movie, 1978
 Acrylic on canvas
 60 x 60 inches (152.4 x 152.4 cm)
 Collection Edward Israel, Los Angeles

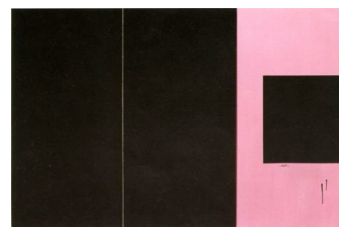


Tomorrow's Parties, 1979/1994

Acrylic on canvas (diptych)

48-1/4 x 72-1/4 x 2-1/2 inches (122.6 x 183.4 x 6.4 cm) overall

Hauser & Wirth Collection, Switzerland



Tourmaline, 1992

Oil on canvas

42 x 42 inches (106.7 x 106.7 cm)

Collection David Doubilet, Toronto



Looks Like Music, 1999

Oil and fabric on canvas

75 x 60 inches (190.5 x 152.4 cm)

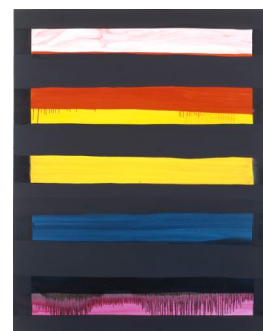
Collection Stephania and James McClennen, New York



Moira, 1998

Oil on canvas

Collection Ninah and Michael Lynne, New York



Pink Jackie P, 2001

Oil on canvas

50 x 37-3/8 inches (127 x 95.3 cm)

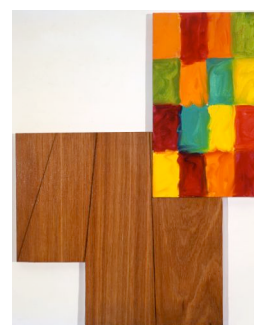
Private collection, Switzerland

*Fresno (Ernie Palomino)*, 2004

Oil on canvas and colored pencil on wood panel (diptych)

31 x 22-3/4 inches (78.7 x 57.8 cm)

Collection of Rena Conti and Ivan Moskowitz, Chicago

*Woody's Truck Stop*, 1992–1997

Oil on canvas (diptych)

67 1/4 x 57 1/4 inches (170.8 x 145.4 cm)

Collection Phil Schrager, Omaha

*Union*, 2000

Oil on canvas with graphite

40 x 32 inches (101.6 x 81.3 cm)

Private collection, Los Angeles



Moira and John, 2001

Oil on canvas

40 x 30 inches (101.6 x 76.2 cm)

Collection Moira and John Heilmann, Davis, California

*Lovejoy Jr.*, 2004

Oil on canvas

40 x 32 inches (102 x 81.3 cm)

Collection Rena Conti and Ivan Moskowitz, Chicago

*Sculpture of Night*, 1968 (2007 reconstruction)

Plywood, rayon flocking, and bamboo

108 x 36 x 30 inches (274.3 x 91.4 x 76.2 cm)

Collection the artist

*The Black Door*, 1972

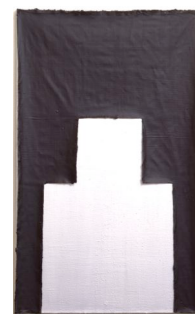
Acrylic on Canvas

Private Collection, New York

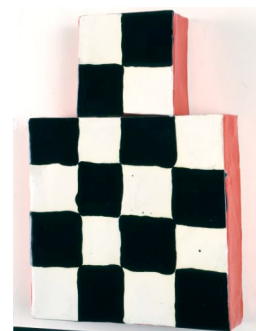


Kachina Gate, 1980

Acrylic on cut and uncut canvas
 51 x 31 inches (129.5 x 787.4 cm)
 Collection the artist

*Kachina*, 1985

Glazed ceramic
 16-1/2 x 11-1/2 x 2-3/4 inches (41.9 x 29.2 x 7.0 cm)
 Private collection, New York

*Bomb Plate*, ca 1980

Glazed ceramic
 Collection Steve Miller

*Jack of Hearts*, 2005

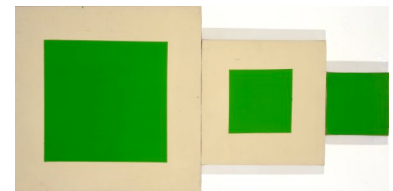
Oil on canvas
 42 x 60 x 1-1/2 inches (106.7 x 152.4 x 3.8 cm)
 Collection Matt Aberle, Los Angeles



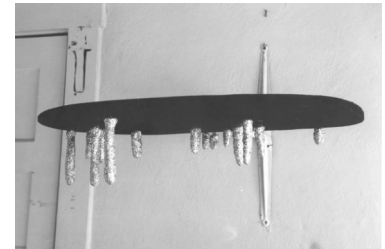
Gordy's Cut, 2003
 Oil on canvas
 42 x 36 inches (106.7 x 91.4 cm)
 Collection Carol and David Appel, Toronto



Green Queen, 1977
 Acrylic on canvas (triptych)
 18 x 36 inches (45.7 x 91.4 cm)
 Collection the artist



Starry Night (Night Sky), 1967
 Flocked plywood, papier mâché and glitter
 24 x 36 x 18 inches (61 x 91.4 x 45.7 cm)
 Collection Barbara Scales, Berkeley, California



The Big Dipper, 1969
 Non-firing plastic clay and lead
 4-3/4 x 18 x 3-1/4 inches (120.7 x 45.7 x 9.52 cm)
 Collection the artist



3-D Cup Drawing II, 1983

Oil on whiteware

9-1/4 x 14-1/4 x 18 inches (23.5 x 36.2 x 45.7 cm)

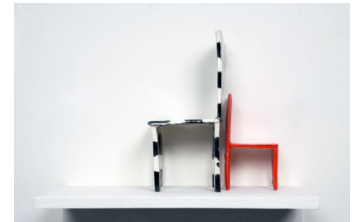
Collection the artist

*Chairs*, 1982

Glazed ceramic

11 1/2 x 9 1/4 x 5 1/8 inches (29.2 x 23.5 x 13.0 cm)

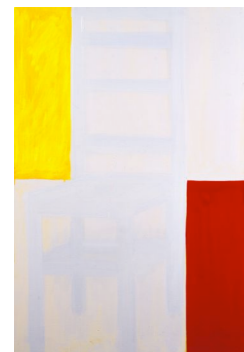
Collection the artist

*Ghost Chair*, 1989

Oil on canvas

54 x 36 inches (137.2 x 91.4 cm)

Collection the artist

*Orbit*, 1978

Acrylic and latex on canvas

24 x 24 inches (61 x 61 cm)

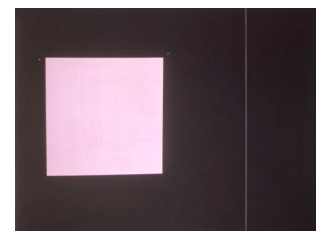
Collection the artist

*Guitar*, 1979

Acrylic on canvas

30 x 40 inches (76.2 x 101.6 cm)

Collection Steven Roth, Los Angeles

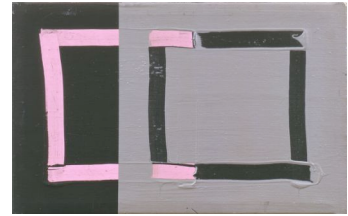


Pink Knot, 1979

Acrylic on canvas

12 x 19 inches (30.5 x 48.3 cm)

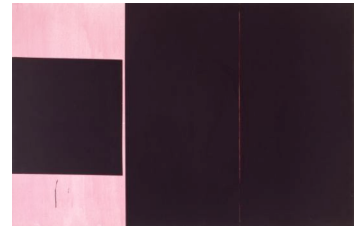
Collection Anita Grossman Solomon, New York

*Tehachapi #1, 1979*

Acrylic on canvas

48 x 72 inches (122 x 182.9 cm)

Collection David Doubilet, Toronto

*Costa Mesa, 2005*

Oil on canvas

15 x 19 inches (38.1 x 48.3 cm)

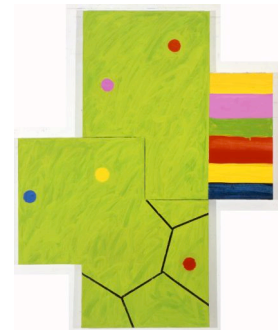
Collection Judy and Joel Slutzky, Newport Beach, California

*Chemical Billy, 2001*

Oil on canvas (diptych)

60-1/4 x 48 inches (153 x 122 cm)

Courtesy Hauser & Wirth, Zurich and London



Hokusai, 2004

Oil on canvas

75 x 120 inches (190.5 x 304.8 cm)

Collection Carol and David Appel, Toronto

*Sea of Joy*, 2006

Oil on canvas

42 x 42 inches (106.7 x 106.7 cm)

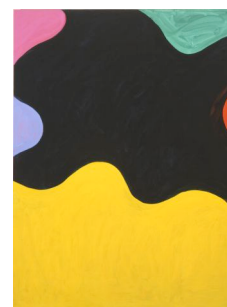
Collection Rena Conti and Ivan Moskowitz, Chicago

*Black Dahlia II*, 2001

Oil on canvas

50 x 37-1/2 inches (127 x 95.3 cm)

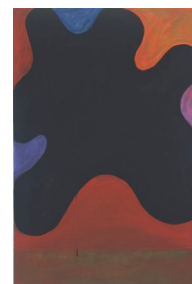
Hauser & Wirth Collection, Switzerland

*To Be Someone*, 2004

Oil on canvas

42 x 28 x 1-1/2 inches (106.7 x 71.1 x 3.8 cm)

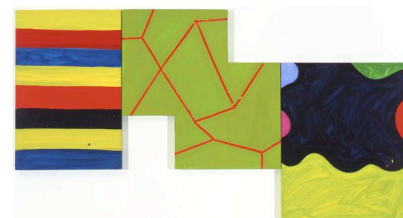
Private collection, Switzerland

*Interval*, 2002

Oil on canvas (triptych)

40 x 74 inches (101.6 x 188.0 cm)

Private collection



Two Spot Charm, 1995

Oil on canvas

58 x 39 inches (147.3 x 99.1 cm)

Collection Lisa Spellman, New York

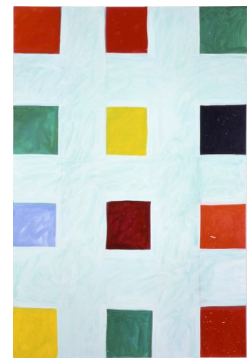
*Wawona, 1999*

Oil on canvas

75 x 50 inches (190.5 x 127 cm)

Collection Roxana & Lars Malmberg-Pirovano, Switzerland

20. 90204

*L.A. Pair, 1976*

Acrylic on canvas (diptych)

60 x 96 inches (154.2 x 243.8 cm)

University of California, Berkeley Art Museum
and Pacific Film Archive. Gift of John L. Bloch
Photography Benjamin Blackwell

Selection of CLUBCHAIRS, 2007

Painted or stained wood, polypropylene webbing

7 Large: 34 x 25 x 27 in. (86.4 x 63.5 x 68.6 cm)

4 Small: 24 x 16 x 18 in. (61 x 40.6 x 45.7 cm)

Collection of the artist



C