

**NEW MUSEUM**  
**Carsten Höller: Experience**

**4<sup>th</sup> Floor**



*What is Love, Art, Money?*, 2011  
 Three toll-free telephone lines, three telephones, and three answering machines  
 Dimensions variable  
 Courtesy the artist



*Mirror Carousel*, 2005  
 Mirrors mounted on MDF panels, lightbulbs, stainless steel seats, stainless steel chains, steel construction, electric motor, and cables  
 295 1/4 x 185 in (750 x 470 cm)  
 Courtesy Gagosian Gallery



*Singing Canaries Mobile*, 2009  
 Male singing canaries, powder-coated metal mobile, birdcages, metal wire, crank jack for adjusting the height of the mobile, wood, plastic, sand, clay bowls, bird feed, and plastic drinking tubes with water  
 Birdcages: 23 5/8 x 17 3/4 x 17 3/4 in (60 x 45 x 45 cm) each; overall dimensions: 196 7/8 x 118 1/8 x 98 3/8 in (500 x 300 x 250 cm)  
 Caldic Collectie, Rotterdam



*Untitled (Slide)*, 2011  
 Stainless steel slide segments, polycarbonate upper shell, steel supports, and canvas mats for sliding

## Niche



High-Rise Slide Connectors

*Skyscraper Slide Connections*, 1998  
Graphite on paper  
16 1/2 x 11 3/4 in (42 x 30 cm)  
Private Collection, New York



*One Minute of Doubt*, 2007  
Two videos, black-and-white, sound  
1 minute each  
Courtesy the artist

## Shaft Project Space

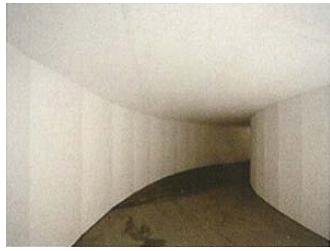


*Pill Clock*, 2011  
Gelatin capsules, mechanical drop  
mechanism, and water cooler  
Courtesy the artist

## 3<sup>rd</sup> Floor



*Giant Psycho Tank*, 1999  
Polypropylene, rubber, steel, PVC tubes,  
charcoal and sand-filled filter, pump,  
continuous-flow water heater, switch unit,  
water, magnesium sulfate, cotton bathing  
gowns, cotton towels, and flip-flops  
236 1/4 x 157 1/2 x 145 5/8 in (600 x 400 x 370  
cm) Courtesy the artist



*Swinging Curve*, 2009  
Polystyrene panels, wood, and metal wire  
574  $\frac{3}{4}$  x 287  $\frac{3}{8}$  x 106  $\frac{1}{4}$  in (1,460 x 730 x 270 cm)  
Courtesy Gagosian Gallery



*Infrared Room*, 2004  
Three infrared cameras, three infrared lamps, three video projectors, three computers with specially designed software, monitor, and cables  
Two versions  
Dimensions variable  
Courtesy the artist



*Atomium Slide House*, 2003  
Transparent acrylic glass and white acrylic glass plinth  
55  $\frac{1}{8}$  x 55  $\frac{1}{8}$  x 55  $\frac{1}{8}$  in (140 x 140 x 140 cm)  
Collection Casey Kaplan, New York



*High Rise Sculpture*, 2006  
Transparent acrylic glass  
82  $\frac{5}{8}$  x 18  $\frac{1}{2}$  x 81  $\frac{7}{8}$  in (210 x 47 x 208 cm)  
Courtesy Gagosian Gallery

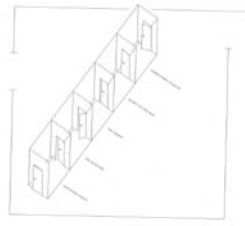
## 2<sup>nd</sup> Floor



*Double Light Corner*, 2011  
184 Cold-cathode lights, metal fixtures, and cables  
Dimensions variable  
Courtesy the artist and Gagosian Gallery



*Aquarium*, 1996  
PVC glass, polyethylene, filter system, heating rods, pump, cables, water, stones, sand, and fish (*Leuciscus idus*)  
Diameter: 63 in (160 cm), height: 65  $\frac{3}{8}$  in (166 cm), benches: 63 x 19  $\frac{5}{8}$  x 19  $\frac{5}{8}$  in (160 x 50 x 50 cm) each  
Courtesy Galleria Massimo De Carlo, Milan



*Experience Corridor*, 2005  
 Plywood, paint, and wood doors with locks.  
 Contains *The Forest*, 2002; *Love Drug (PEA)*,  
 1993/2006; *Phi TV*, 2007; *The Pinocchio  
 Effect*, 1999; *Rabbit on the Skin*, 1996  
 Courtesy the artist, Air de Paris, Paris, and  
 Gagosian Gallery



*The Pinocchio Effect*, 1999  
 Electric medical vibrators, photographs of  
 drawings on paper, steel, wood, and glass  
 Courtesy Gagosian Gallery



*The Forest*, 2002  
 3-D glasses with two LCD monitors, two  
 DVDs, two DVD players, synchronizing control  
 system, cables, wooden chair, and leather  
 pillows  
 Courtesy Air de Paris, Paris

*Rabbit on the Skin*, 1996/2011  
 Wooden table and chair, piezoelectric skin  
 contacts, switch unit, drawing, and cable  
 connections  
 43 1/4 x 25 5/8 x 29 1/2 in (110 x 65 x 75 cm)  
 Courtesy the artist



*Love Drug (PEA)*, 1993/2011  
 Glass vial and phenylethylamine (PEA)  
 4 7/8 x 2 x 2 in (12.5 x 5 x 5cm)  
 Courtesy the artist



*Phi TV*, 2007  
 Two flat-screen TVs, two digital video  
 broadcasting receivers, two remote controls,  
 synchronizer, and cables  
 Dimensions variable

*Animal Group, 2011*

Soft polyurethane, polyurethane foam, polyester, polyvinyl, pink synthetic resin, whiskers, cow horn, deer hoof, artificial eyelashes, and glass eyes

Dimensions Variable

Courtesy Galleria Massimo De Carlo, Milan



*Dolphin, 2011*

Soft polyurethane, glass eyes, artificial eyelashes, made in colors black, blue and white, light-blue and skin-colored  
50 x 200 x 90 cm



*Orangutan, 2011*

Polyvinyl, polyurethane foam, polyester, glass eyes, cow horn.  
40 x 55 x 120 cm



*Crocodile, 2011*

Uncolored polyurethane, glass eyes.  
20 x 110 x 400 cm








*Rhinoceros, 2011*

Yellow-tinted polyurethane, cow horn, blue glass eyes.  
50 x 80 x 120 cm



*Hippopotamus, 2011*

Pink synthetic resin, cow horn, blue glass eyes.  
30 x 55 x 90 cm

	<p><i>Reindeer</i>, 2011 Luminous green colored polyurethane, deer hoof, blue glass eyes. 10 x 28 x 56 cm</p>
	<p><i>Walrus</i>, 2011 30 x 103 x 47cm</p>
<p><b>Lobby</b></p>	
	<p><i>Giant Triple Mushrooms</i>, 2010 Polyester paint, synthetic resin, acrylic paint, wire, putty, polyurethane, rigid foam, and stainless steel Dimensions variable Courtesy Gagosian Gallery</p>
	<p><i>Giant Triple Mushrooms</i>, 2010</p>
	<p><i>Giant Triple Mushrooms</i>, 2010</p>



*Giant Triple Mushrooms, 2010*



*Upside-Down Goggles, 2009/2011*  
Acrylic glass prisms, aluminum, polyethylene, polypropylene, foam, leather, and nylon  
Five versions  
Ca. 11 ¾ x 9 ½ x 5 1/8 in (30 x 24 x 13 cm)  
Courtesy Air de Paris, Paris, Esther Schipper, Berlin, and Galleria Massimo De Carlo, Milan

## Elevators

### [PASSENGER ELEVATOR INSTALLATION]

*The Elevator in the Elevator, 2011*  
Two videos, black-and-white, silent  
Looped  
Courtesy the artist



*New York Twins, 2011*  
Two videos, black-and-white, sound,  
Looped  
Courtesy the artist