

FALL 99  
WINTER 00

# NEW MUSEUM NEWS



Cildo Meireles *Entrevendo/Glimpsing* (1970-94)  
Wooden tube, fan, heating unit, ice



Cildo Meireles *Entrevendo/Glimpsing* (1970-94)  
Wooden tube, fan, heating unit, ice

## CONTENTS

- 01 LETTER FROM THE DIRECTOR
- 02 FILM SERIES: VIDEODROME
- 03 MUSEUM EVENTS: CLUB MIX
- 04 EXHIBITION: BRAZILIAN ARTIST CILDO MEIRELES
- 05 UPCOMING EXHIBITIONS
- 06 PUBLIC PROGRAMS AT THE NEW MUSEUM
- 07 WHAT'S NEW AT THE BOOKSTORE
- 08 LIMITED EDITIONS
- 09 MEMBERS' EVENTS
- 10 TRUSTEES AND BENEFACTORS
- 11 INTRODUCING NEW TRUSTEES AND MEMBERS
- 12 FALL/WINTER CALENDAR

02



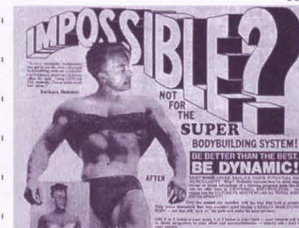
03



04



05



06



07



08



Cildo Meireles *Volátil/Volatile* (1980-94). Ash, candle, natural gas.  
Collection of the artist. Photo courtesy of Capp Street Project, San Francisco



New Museum News is a publication of the New Museum of Contemporary Art

**newmuseum**  
NEW MUSEUM OF CONTEMPORARY ART

583 Broadway, New York, NY 10012  
(between Houston and Prince Streets)  
**telephone** 212.219.1222  
**email** newmu@newmuseum.org

#### Hours

**Mon** closed  
**Tue** closed Bookstore noon - 8 pm  
**Wed** noon - 6 pm Bookstore noon - 8 pm  
**Thu** noon - 8 pm Free 6 - 8 pm  
**Fri** noon - 8 pm  
**Sat** noon - 8 pm  
**Sun** noon - 8 pm

#### Directions

**Subway** N, R to Prince Street;  
A, C, E to Spring Street;  
6 to Spring Street or Bleecker Street;  
B, D, Q to Broadway/Lafayette  
**Bus** 1, 5, 6, 21 to Houston Street or Broadway

#### Admission

\$6 general; \$3 artists, students, seniors  
Free for members  
Free for visitors 18 and under

The New Museum of Contemporary Art is supported, in part, with funds from the New York State Council on the Arts, the New York City Department of Cultural Affairs, and from the Museum's Producers Council, members, and friends.

New Museum News is made possible by a generous grant from The Joe & Emily Lowe Foundation. It is edited by Maureen Sullivan, Director of Marketing, and Meg Blackburn, Public Relations Coordinator. Designed by Christiaan Kuypers and David Lee.

As we approach the century's end, assaults against contemporary art have heated up again. Real and symbolic battles are being waged to defend moral and political agendas, and contemporary art has proven a convenient target. While the emotions unleashed by these attacks help to keep art alive and on people's minds, the issues of freedom of speech and expression, which we take to be inalienable rights, are tested over and over again. The New Museum is committed to continually and vigilantly defending these rights and we are proud of our dedication to advancing innovative art.

This fall, the New Museum presents its most ambitious exhibition to date—an all-museum survey of 51-year old Brazilian artist Cildo Meireles. Meireles has been at work for thirty years, allied in the beginning of his career with a group of conceptual sculptors that includes Lygia Clark and Helio Oiticica. Though widely known and appreciated in South America and Europe, their work has had little exposure in New York. This exhibition presents a rare opportunity for audiences here to experience the work of Meireles in depth. The exhibition will then travel to the Museum of Modern Art, Rio de Janeiro, and the Museum of Modern Art, São Paulo.

I'm also pleased to announce that artist and architect Maya Lin has completed a magnificent limited edition for the New Museum, *Ecliptic*. The polished pewter wall relief is a wonderful example of Lin's ongoing interest in sensual, organic minimal forms. I hope you'll stop by to see it at the New Museum.

Over the past several months we have been expanding the Board of Trustees, adding several distinguished new members: Nancy Portnoy, James-Keith Brown, Stephanie French, Joan Lazarus, and Dakis Joannou. Their expertise and passion for contemporary art will enrich and enliven the dynamic process of forging a new, New Museum.

We've also initiated a special high-level membership category, the Producers Council. This exclusive group will participate in behind the scenes activities and experiences geared to curious and adventurous contemporary art enthusiasts.

Contemporary art has the power to affect the lives of all people. The mission of the New Museum is to present art not yet familiar to mainstream audiences. Today, this mandate is more important than ever.

Lisa Phillips



1 Cildo Meireles, from *Insercoes em Circuitos Ideologicos/Insertions into Ideological Circuits, Projecto Cedula/Cedula Project* (1970). Stamp, bills

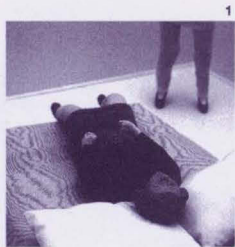
2 At the Brooklyn Museum of Art rally for Sensation

## VIDEODROME

*Videodrome* was an exhibition of recent video works by 18 artists shown over 18 days at the New Museum. Each day was dedicated to one artist and featured a single-projection work continuously screened. Many of the works are relatively short in duration, including one that lasts only a few seconds; others are the length of feature films. The selection emphasized new works by emerging artists, artists not known for their work in video, and artists working outside the U.S.

Visitors could select and view the work of any of the artists on a video station adjacent to the screening room. Artists included Sadie Benning, Tania Bruguera, Justine Cooper, Steve Doughton, Doug Henry, Kristin Lucas, Christian Marclay, Daniel Pflumm, Liliana Porter, Tracey Rose, Gregor Schneider, Gary Simmons, Jennifer Steinkamp, Momoyo Torimitsu, Uri Tzaig, Panayota Tzamourani, Francesco Vezzoli, and Karen Yasinsky. More information about *Videodrome* artists and works is available online at [www.newmuseum.org](http://www.newmuseum.org).

The Public Access Gallery at the New Museum is free and open Noon to 6 pm Sunday, Noon to 8 pm Tuesday through Saturday. Closed Monday.



Stills from: 1 *No Place Like Home* by Karen Yasinsky  
2 *El Peso de la Culpa* by Tania Bruguera

3 *Hunger* by Liliana Porter  
4 *Ferrum 5000* by Steve Doughton



**CLUB WITH A VIEW**  
From the balcony at the Limelight, a clubgoer takes in the dazzling video collages created by Keith Piper at *Club Mix New York*. The evening was sponsored by the Downtown Arts Festival and featured the video and digital art of

Piper, Pervaiz Kahn, David Craig, and other artists, with music by SoundLab and other deejays. *Club Mix New York* was held September 9 in conjunction with Piper's exhibition *Relocating the Remains* (15.jul.99 - 17.oct.99) at the New Museum.

## A SENSORY JOURNEY: THE WORK OF CILDO MEIRELES

The first New York retrospective of work by this internationally acclaimed Brazilian artist will consist of five room-scale installations and walk-through environments, thirteen major sculptures, and several dozen drawings spanning a twenty-five year period. Generally acknowledged as one of the most influential artists in Latin America, Cildo Meireles (b.1948) creates sensual, charged environments that blend sight, sound, touch, and smell into dramatic experiences that compel the visitor to go beyond looking at the work to physically interact with it.

In *Entrevendo* (*Glimpsing*, 1970-94), for example, the visitor steps into a colossal hollow wooden cone and feels a steady stream of warm air blowing from the far end. Before entering, the visitor is offered two pieces of ice—one sweet, one salty—to taste while inside. Such conflicting stimuli and their impact on the senses serve as metaphors for constantly changing political, cultural, and social conditions in Brazil.

In the spectacular *Fontes* (1992), a small room is converted into a labyrinth by suspending thousands of yellow rulers from the ceiling, mounting thousands of yellow clocks on the walls, and covering the floor with thousands of tiny black plastic numbers. To stress the limits of measurement, the artist constructs a space where movement is hampered by the very same tools that are used to quantify time and space.

The exhibition was organized by Senior Curator Dan Cameron and Adjunct Curator Gerardo Mosquera. A fully illustrated catalogue with essays by Dan Cameron, Gerardo Mosquera, and Paulo Herkenhoff is available in the New Museum Bookstore. The exhibition will travel to the Museum of Modern Art in São Paulo (13.jul.00 - 20.aug.00) and to the Museum of Modern Art in Rio de Janeiro (5.oct.00 - 3.dec.00).

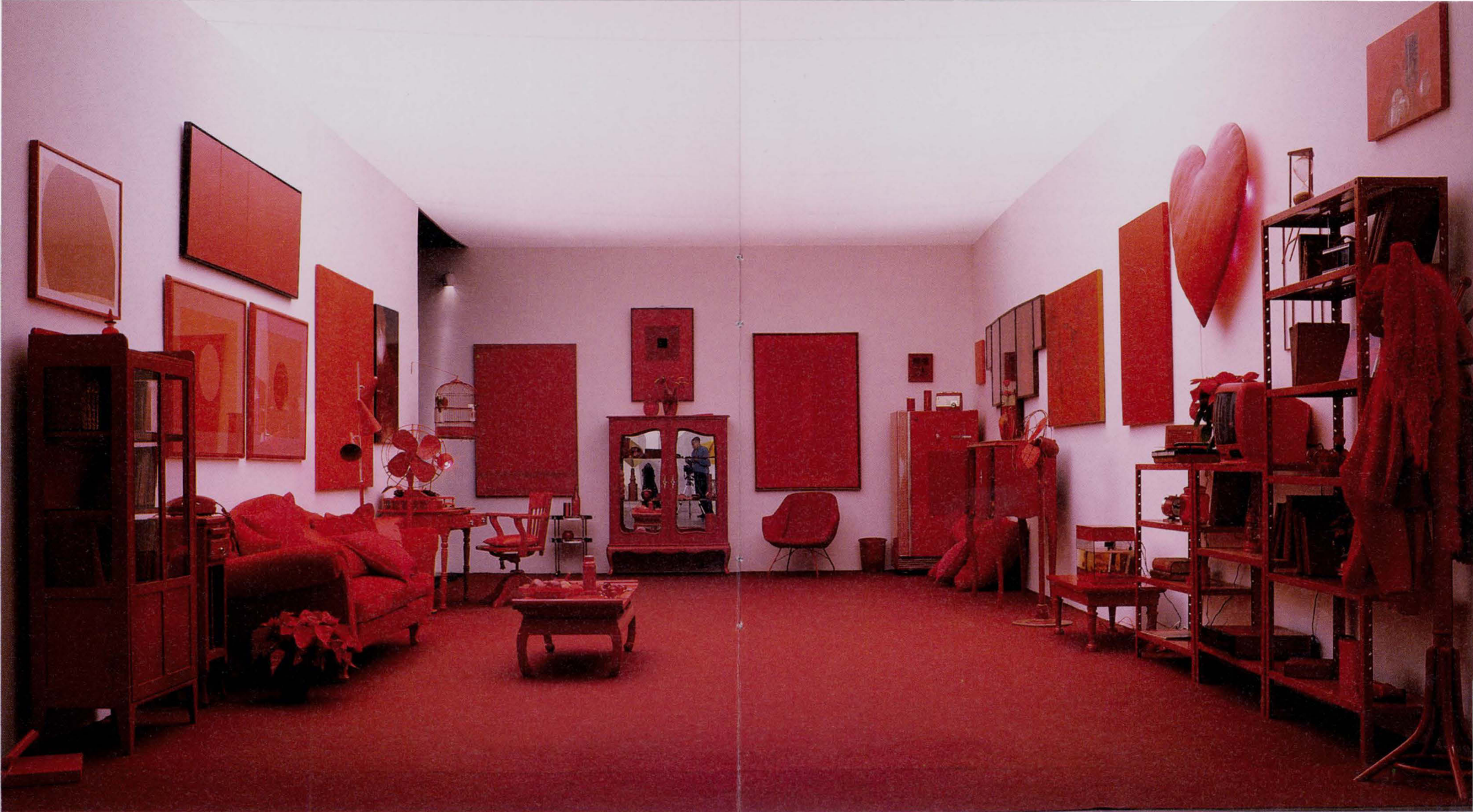


1



1 Pieces of ice—in the shape of wind—are handed to visitors as they enter the installation *Entrevendo/Glimpsing* (1970-94)

2 *Fontes/Fountains* (1992). 6,000 rulers, 1,000 yellow clocks, 500,000 black numbers. 19'8" x 19'8" x 12' approx. Collection of the artist



*Cildo Meireles* is organized by the New Museum of Contemporary Art, and is made possible by generous grants from the National Endowment for the Arts, a federal agency, and from the Ministry of Culture of Brazil.

Additional support is provided by the Norman & Rosita Winston Foundation, the Elizabeth Firestone Graham Foundation, Carol and Arthur Goldberg, and Nancy and Joel Portnoy.

The exhibition and its international tour are sponsored by

**PHILIP MORRIS**  
COMPANIES INC.

2



1 *Desvio para o Verelho/Red Shift* (1967-84).  
Mixed media installation. 9'x32'9"x16'5" approx. Collection of the artist.  
2 *Red Shift* (detail).

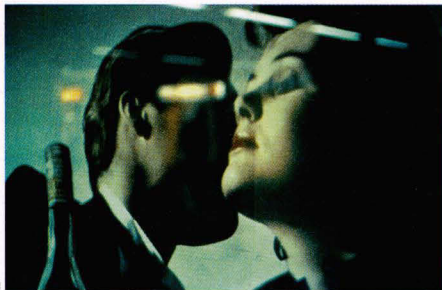
**PICTURING THE MODERN AMAZON 30.MAR.00**

This exhibition, devoted to the representation of hypermuscular women, will examine the challenges their power has posed in contemporary society. *Picturing the Modern Amazon* will feature archival images of strong women, comics, and works by more than forty-five contemporary artists, including specially commissioned art. The exhibition is co-curated by Laurie Fierstein, Joanna Frueh, and Judith Stein.

A special one-night event, *Posing and Performing*, a live physique exhibition by hypermuscular bodybuilders, will be held at the New Museum on the evening of Friday, March 31, 2000 in conjunction with the show.

**TIBOROCITY 06.MAY.00**

A retrospective of Tibor Kalman's extraordinary work in print, film, video, and product design, this show covers twenty years of Kalman's activity including over 200 works from Kalman's personal collection and the archives of M&Co., and his more recent contributions as editor-in-chief of the Benetton-sponsored magazine, *Colors*. The exhibition was organized by the San Francisco Museum of Modern Art.

**MARTHA ROSLER 13.JUL.00**

The first major retrospective of the work of Martha Rosler, instrumental in the development of both feminist and video art, is a comprehensive survey of her video, installation, and photographic work from the 1970s to the present. The exhibition was organized by the Ikon Gallery in Birmingham, England.

**PIERRE ET GILLES SEP.00**

The first museum survey in North America of painted photographs by the French team Pierre et Gilles range from celebrity portraits to more ethereal images rooted in mythological iconography. This exhibition will include between twenty-five and thirty works spanning nearly two decades, along with a selection of early works from 1982-1988.



1 Martha Rosler, from color photographic series *Transitions and Digressions*, Frankfurt subway (1983).

2 Mary Ellen Mark Shavanas Begum with Her Three-year-old Daughter, Parveen. Great Gemini Circus, Perintalmanna, India (1989). From *Picturing the Modern Amazon*





1 Tibor Kalman *African Queen* (1993). From *Colors* magazine. *Tiborocity* opens May 6, 2000

#### UP CLOSE AND PERSONAL WITH CILDO MEIRELES

Talks with and about Cildo Meireles give audiences the opportunity to learn more about the artist's ideas, inspirations, and cultural issues related to his work. Join Meireles, New Museum Senior Curator Dan Cameron, and Curator Gerardo Mosquera for a talk on Sunday, 19.nov.99 from 2-3.p.m. at the New Museum.

Members and friends are also invited to two panel discussions: *The Work of Cildo Meireles* (13.dec.99 at the Drawing Center), and *South American Art* (8.dec.99 at the Bronx Museum of the Arts in conjunction with their exhibition *Amnesia*).

And Paolo Herkenhoff, Museum of Modern Art Adjunct Curator and a contributor to the *Cildo Meireles* catalogue, will lecture on the historical significance of Meireles within global conceptualism on the evening of Friday, 21.jan.00.

#### WINDOW ON BROADWAY PERFORMANCES

Cildo Meireles's installation of a miniature street vendor, *Camelô*, kicks off a new series of Window installations and performances that will stop traffic. *Camelô* will be featured in the New Museum's Window on Broadway on 10 and 11.dec.99. The limited edition *Camelô* is on view and available for sale at the New Museum and at Galerie Lelong, courtesy of Galerie Luisa Strina and the artist.

#### ARTO LINDSAY'S EVENING OF MUSIC

"Because I was a teenager in Brazil in the 60s, I thought it was part of the purpose of pop music to change people's consciousness and spread information." —Arto Lindsay in *The Wire*.

In celebration of *Cildo Meireles*, Arto Lindsay will present a club night of Latin American Music. In the past, Lindsay has collaborated with multi-disciplinary artists such as Vito Acconci, Laurie Anderson, John Zorn and David Byrne—and most recently Brian Eno, Andres Levin and Matthew Barney. Expect an exciting and eclectic group of musicians! The event is planned for January 2000. Stay tuned to [www.newmuseum.org](http://www.newmuseum.org) for information on date, time and location.

#### GROUP TOURS

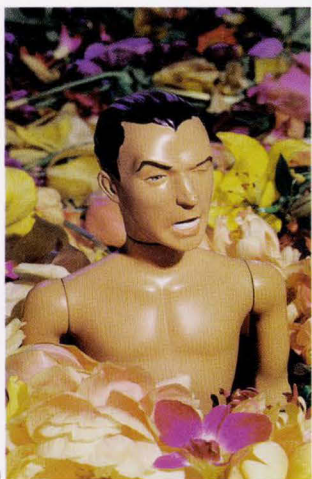
The New Museum offers group tours of *Cildo Meireles* on Wednesdays and Thursdays by appointment (please call ext. 216). Groups are limited to twenty people.



2 Arto Lindsay, photograph by Chris Winget

3 Art from Lindsay's new CD by Matthew Barney. Photograph by Larry Lamé

## EVENTS



1 Artists David Byrne (above), David Carson, Mark Dion, Alfredo Jarr, among others, share their ideas and new releases with New Museum members and friends in the Bookstore this November and December. See calendar for details.

## GIFTS

JEWELRY &amp; HOME DESIGN

**THE APHRODITE CHAIR**

A Christopher Ross-designed 'functional sculpture,' the Aphrodite Chair consists of a brightly colored, translucent cast acrylic seat and back and a chrome frame. It was introduced at the 1999 Salon de Mobile in Milan, and is distributed to a small group of exclusive stores. Get yours while they're still available! \$300 (Members save 10%)

**HAND-CARVED JEWELRY FROM ALEXIS BITTAR**

Each piece in this grouping of lucite jewelry is carved, painted, and gilded by Alexis Bittar's studio, giving it a luminescent glow of color and light. Available in colors ranging from jewel tones to neutrals to dark earthy hues, this lovely jewelry will add sparkle to your holiday. \$30 to \$115 (Members save 10%)

**INTEGRATED TABLE OBJECTS**

Harry Gutfreund is the mastermind behind this collection of smooth, milled aluminum tabletop pieces whose curved exteriors nestle together. Both beautiful and useful, the series includes vases, candle holders, cream and sugar dispensers, salt and pepper shakers, toothpick and napkin holders. The collection won Accent on Design's best new product award. \$30 to \$150. (Members save 10%)



2

1 David Byrne, *Ecstasy* (1997). From his 1999 book, *Your Action World*  
2 Harry Gutfreund, *Integrated Table Objects*

NEW  
AND NOTEWORTHY  
READING**WILLIAM KENTRIDGE**

With essays by Dan Cameron, Carolyn Christov-Barkargiev, J. M. Coetzee, and William Kentridge. Documenting the work of this extraordinary South African artist who has risen to prominence in the 90s, this book offers incisive analysis and multiple perspectives on Kentridge's animated films and his view of South Africa today. \$29.95 (\$26.95 for members)

**THE PENCIL OF NATURE**

Featured in the Dutch Pavilion of the 48th Venice Biennale, Daan Van Golden's experimentation in various media and the resulting 'cosmopolitan oeuvre' are fully explored in this book. \$35. (\$31.50 for members)

## SHAKE IT!



3

Shake it, trim it, deck it with great *Adornaments*. Following the tremendous success of last year's Holiday Happening, we are pleased to announce:

**ADORNAMENTS (ARTIST DESIGNED ORNAMENTS)**

8.dec.99 7.30 - 9.30.p.m

Launch Party for New Museum Members at the new DKNY Store on 60th St. and Madison Ave.

On view and for sale will be over 100 Snow Globes and Holiday Ornaments created by contemporary artists including: Renee Cox, Phil Frost, Bryan Hunt, Jessica Craig-Martin, Oliver Herring, Jeff Koons, Peter Krashes, Liza Lou, Virgil Marti, Laura Parnes and Sue de Beer, Pierre et Gilles, Alexis Rockman, Ilona Malka Rich, Uscha Pohl, Kenny Schacter, Laurie Simmons, Bettina Werner, and more. DKNY is hosting the exhibition and party.

All proceeds from the sale of *Adornaments*, plus 10% from all sales during the party at DKNY, will support the New Museum's exhibitions and programs. The artworks will be on exhibit in the New Museum's Window on Broadway and in the DKNY store windows from December 6 through December 11. For more information call Vicki Latimer at 212.219.1222 ext. 226.

## THE BOOKSTORE

The New Museum Bookstore has the latest in artist monographs, volumes on cultural theory and design, unique small press titles, and a sensational selection of gifts, jewelry, and original design items just in time for creative holiday shopping. Members receive 10% off everything in the Bookstore, and 20% discount on New Museum merchandise. The Bookstore is open six days a week: Tuesday through Saturday from noon to 8.p.m; Sunday from noon to 6.p.m. For more information, please call 212.219.1222 ext. 234.

3 Snow Globe photo by Fred Scruton

# MAYA LIN

The New Museum is pleased to announce the first limited-edition sculpture made by internationally acclaimed artist and architect Maya Lin. An experiment with materials new to the artist, *Ecliptic* was hand-cast in pewter in a sensual form and surface that creates a meditative and powerful sculpture. Typical of Lin's work exploring our relationship with sky and landscape, the sculpture reflects light and creates shadows that evoke the moon during phases of an eclipse.

Best known for her design of the Vietnam Veterans' Memorial in Washington D.C. and the Civil Rights Memorial in Montgomery, Alabama, Lin has earned critical acclaim for her recent architectural projects and art installations. Her exhibition *Maya Lin: Topologies* toured museums throughout the country, and she was the subject of the Academy Award Winning Film *Maya Lin—A Strong, Clear Vision*. The artist is represented by Gagosian Gallery.

## ECLIPTIC (1999)

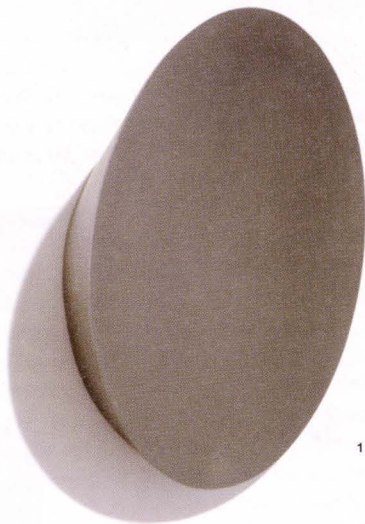
Pewter, 13" x 12" x 4"

Edition of 30, plus 3 artist's proofs and 3 publisher's proofs, signed and numbered.

Price: \$4,500 Pre-publication price: \$3,900

The pre-publication price is available to Members at the Associate level and above, and is being offered through 1.dec.99.

*Eclipse* is presently on view at the New Museum. For more information contact Maureen Sullivan at 212.219.1222 ext. 229 or visit [www.newmuseum.org](http://www.newmuseum.org).



1

## THE NEW MUSEUM LIMITED EDITION PROGRAM

Since 1984, the New Museum's limited edition program has created an exceptional opportunity for supporters to build a very special collection of important works by major American and international artists. The proceeds help the Museum continue its role as an innovator in contemporary art programing. Many of the limited-edition sculptures and multiples are sold out; however, works by the following artists are available: Dennis Adams, Christian Boltanski, Christian Marclay, Donald Moffett, Bruce Nauman, Rona Pondick, Andres Serrano, Judith Shea, Lorna Simpson, Haim Steinbach, and Robert Therrien.

**Coming up: a new limited edition by William Kentridge.** Details available in December.

## MEMBERS GO TO THE MOVIES

Members are invited to a cocktail reception and private preview screening of "The Talented Mr. Ripley" courtesy of Paramount. The film is directed by Anthony Minghella, and stars Matt Damon and Gwyneth Paltrow.

Monday, 20.dec.99

6.30.pm Cocktails & Hors d'oeuvres, 7.pm Screening

Paramount Screening Room, 1515 Broadway, 3rd Floor

Free for Producers Council Members

\$10 for Members (maximum 2 tickets per person)

Seating is limited in the private screening room, all tickets will be given on a first come, first serve basis. Please RSVP to 212.219.1222 ext. 228.

## EXHIBITION TOUR

A private walk-through of the Cildo Meireles exhibition with Dan Cameron is scheduled for Wednesday, January 19, from 6.30 to 8.pm. This tour provides members with a unique opportunity to engage in an in-depth discussion about the artist and the work on view.

## INSIDE ART EVENTS

Members are invited to participate in an ongoing series of behind-the-scenes art events such as visits to artists' studios and private collections, salon discussions, and gallery walking tours. For more information, or to upgrade your membership, call Suzanne Egeran, Membership Coordinator, at ext. 228.

## TRIP TO CARNEGIE INTERNATIONAL 99/00

On the weekend of November 12-14, 1999, the New Museum will host a trip for Trustees and Director's Council and Patron-level members to the 53rd Carnegie International contemporary art exhibition in Pittsburgh, Pa. Led by Senior Curator Dan Cameron, the group will visit two contemporary art hotspots—the Mattress Factory and the Andy Warhol Museum—as well as private collections in the area.

The Museum's National and International tours are led by the Senior Curator and the Director. This past June, the Museum hosted a trip to Venice, Milan, Basel, and Zurich, to preview the Venice Biennale and the opening of the Basel Art Fair, among other exclusive events.



2



3

**TRUSTEES**

Saul Dennison

*President*

James C.A. McClennen

*Vice President and Treasurer*

Paul T. Schnell

*Vice President*

Robert J. Shiffler

*Vice President*

Laura Skoler

*Vice President***BENEFACTORS***Major gifts received between  
01.jan.99 and 30.sep.99*

American Express

Anonymous

AT&amp;T

Bell Atlantic Foundation

Brian Brille

The British Council

The British Embassy

James-Keith Brown and

Eric Diefenbach

Henry M. Buhl

Chase Manhattan Bank

Christie's

Colgate-Palmolive Company

Consolidated Edison

Charles E. Culpeper

Foundation

Ellyn and Saul Dennison

Beth Rudin DeWoody

Zöe and Joel Dictrow

Richard and Eileen Ekstract

I.J. Feldman Foundation

Filmmakers Collaborative

Sunny and Bradley Goldberg

Carol and Arthur Goldberg

Lola and Allen A. Goldring

Manuel E. Gonzalez

Elizabeth Firestone Graham

Foundation

Gail Gregg and

Arthur Sulzberger, Jr.

Agnes Gund and

Daniel Shapiro

Keith Haring Foundation

Dieter Bogner

Jean Carey Bond

James-Keith Brown

Stephanie French

Allen A. Goldring

Manuel E. Gonzalez

Maren Hensler

Dakis Joannou

Joan Lazarus

Toby Devan Lewis

Maren and Guenter Hensler

Barbara S. Horowitz

Institute of Museum and

Library Services

Jerome Foundation

Kenyon and Kenyon

Phyllis and Edward

Kwalwasser

Joan and Charles Lazarus

Gail LeBoff

Toby Devan Lewis

Jonathan Lewis and

Roberto Posada

Albert A. List Foundation

Caroline Lloyd

Vicki and Kent Logan

Jane Lombard

Mary Macbeth Looker and

Robert Looker

Joe and Emily Lowe

Foundation

The Henry Luce Foundation

Henry Luce III

Macy's East

Penny and David McCall

Stephanie and

James C.A. McClennen

George P. Mills

Morgan Guaranty and Trust

Company of New York

National Endowment for

the Arts

New York City Board

of Education

New York City Department

of Cultural Affairs

Steven M. Pesner

Nancy Portnoy

Carole Rifkind

Herman Schwartzman, Esq.

Henry Luce III

*Life Trustee*

Vera List

*Emerita*

New York State Council

on the Arts

Leonard and Susan Bay Nimoy

Family Foundation

Peter Norton Family Foundation

Michele and Steven M. Pesner

Philip Morris Companies, Inc.

Nancy and Joel Portnoy

Denise Rich

Carole and Richard Rifkind

Laurance Rockefeller

The Rockefeller Foundation

Marc Rowan

Judith Rothschild Foundation

Joanne and Paul T. Schnell

Patrick Savin

Carol and Eric Schwartz

Marilyn and Herman

Schwartzman, Esq.

Robert J. Shiffler

Dorothy Sahn Siegal and

Abe Siegal

Laura Skoler

Ellen and Jerome L. Stern

Time Warner, Inc.

Wiesje and Jack van Hulst

Versace Classic

Andy Warhol Foundation for

the Visual Arts, Inc.

Robert W. Wilson

Norman and Rosita Winston

Foundation

Neda Young

**WELCOME NEW TRUSTEES**

The New Museum is delighted to announce that five exceptional new Trustees have joined our Board:

**James-Keith Brown**

Director, Not-for-Profit, Goldman Sachs, has substantial experience managing endowment funds and is an active collector of the work of young artists.

**Stephanie French**

Vice President, Corporate Contributions and Cultural Programs, Philip Morris Companies Inc., has led Philip Morris's groundbreaking support for the arts over the last twenty years.

**Dakis Joannou**

One of the world's foremost collectors of contemporary art, established the DESTE Foundation for Contemporary Art, an international sponsor of new works, exhibitions, and publications.

**WELCOME NEW MEMBERS**

**Fellow** Alexander Gorlin

**Associate** Mary Ann Albright, Hudson, Shirley and Winthrop R. Munyan

**Friend** Roy R. Eddey, Ellen Farber, Ann Fensterstock, Adam B. Frisch, Victoria Malkin and Andrew Davenport, Robert E. Penn, Debra Singer, Kathleen F. and George E. Todd, Larry Volpi

**Advocate** Susan Friedman, Francie Bishop Good, Ellen and Sanford Luger, Faye Ginsburg and Fred Myers, Rikki Michels, Seren Morey, Holli Rogers, Marcia Tanner and Windsor Soule, Wayne Vincent, Michael Zimmer

**Joan Lazarus**

A collector who headed her own award-winning commercial and residential design firm, has lectured at Parsons and F.I.T. and also serves on the board of the Alvin Ailey American Dance Theater.

**Nancy Portnoy**

An avid collector of work by emerging and established artists, lectures on art at the Cooper Union and also serves on the Drawing Committee of the Museum of Modern Art.

## NOVEMBER

**VIDEODROME FILM SERIES**

all day

- tue.2** Liliana Porter  
**wed.3** Daniel Pflumm  
**thu.4** Tania Bruguera  
**fri.5** Tracey Rose  
**sat.6** Kristin Lucas  
**sun.7** Gregor Schneider  
**tue.9** Momoyo Torimitsu  
**wed.10** Panayota Tzamourani  
**thu.11** Steve Doughton  
*Public Access Gallery*

**DAVID CARSON:  
FOTOGRAFIKS**

- thu.4** 6 - 8.p.m  
 Designer David Carson lectures on his upcoming book, *Fotografiks*  
*Bookstore*

**CILDO MEIRELES  
PATRONS' RECEPTION****thu.18** 6 - 8.p.m**MEMBERS' RECEPTION****fri.19** 8 - 10.p.m**CILDO MEIRELES OPENS****fri.19** noon - 7.p.m  
*All galleries*

**sun.21** 2 - 3.p.m  
 A Conversation with Cildo Meireles, Gerardo Mosquera and Dan Cameron.  
*Public Access Gallery*

**DAVID BYRNE:  
YOUR ACTION WORLD**

**sat.20** 6 - 8.p.m  
 A book launch party and discussion.  
*Bookstore*

**ALFREDO JAAR: STUDIES ON  
HAPPINESS, 1979-1981**

**tue.23** 6 - 8.p.m  
 Artist Alfredo Jaar discusses books about his work.  
*Bookstore*

**thu.25** Museum closed for Thanksgiving

## DECEMBER

**MARK DION: ARCHEOLOGY**

**fri.3** 6 - 8.p.m  
 Mark Dion signs copies of his new book.  
*Bookstore*

**CILDO MEIRELES' CAMELO**

**fri.10 - sat.11**  
*Window on Broadway*

**PANEL DISCUSSION:  
THE WORK OF CILDO MEIRELES**  
**mon.13** 6.30 - 8.p.m  
 Moderated Dan Cameron with Charles Merewether, Raul Zamudio and others.  
*At The Drawing Center*

**FILM SCREENING:  
THE TALENTED MR. RIPLEY**  
**mon.20** 6.30 - 9.p.m  
*Paramount Screening Room*

**fri.24** Museum closes at 3.p.m for Christmas

**sat.25** Museum closed

**fri.31** Museum closes at 3.p.m for New Year's

## JANUARY

**sat.1** Museum closed

**CILDO MEIRELES  
MEMBERS' TOUR**  
**wed.19** 6:30 - 8.p.m

**CILDO MEIRELES LECTURE  
BY PAOLO HERKENHOFF**  
**fri.21** 6 - 7.p.m  
 Paolo Herkenhoff is an Adjunct Curator at MoMA and will lecture about Cildo Meireles' global conceptualism.  
*Public Access Gallery*

**CARNIVAL CLUB NIGHT  
WITH ARTO LINDSAY**  
 An evening of Latin American music with an exciting group of musicians.  
*date, time, location tba*

## FEBRUARY

More events and programs are being planned!  
 For the latest updates visit [www.newmuseum.org](http://www.newmuseum.org)

## MARCH

**CILDO MEIRELES CLOSSES**  
**sun.5**

**PICTURING THE MODERN  
AMAZON MEMBERS' RECEPTION**  
**thu.30**

**PICTURING THE MODERN  
AMAZON OPENS TO THE PUBLIC**  
**fri.31**  
*First floor and mezzanine*

**POSING & PERFORMING:  
BODYBUILDING PERFORMANCE**  
**fri.31**  
 In conjunction with the *Picturing the Modern Amazon* exhibition.  
*Second floor gallery*



Cildo Meireles, from *Insertions into Ideological Circuits, Cedula Project* (1970). Stamp, bills



Marnie Weber *The Competition* (1998), from *Picturing the Modern Amazon*.  
The exhibition opens March 30, 2000.