

SPRING
SUMMER 05

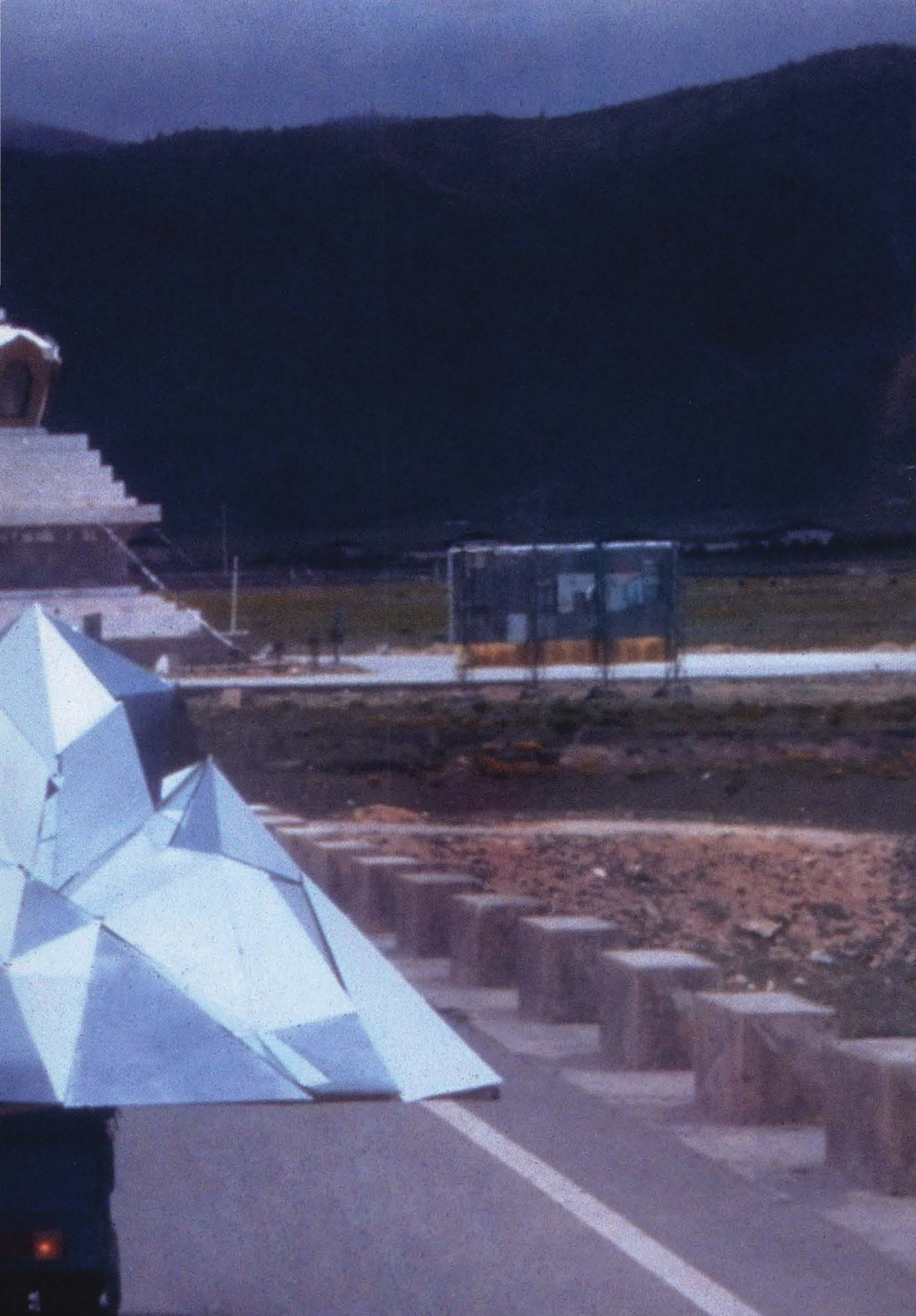
NEW MUSEUM NEWS





Front cover
Aernout Mik *Refraction* (2005). Video still

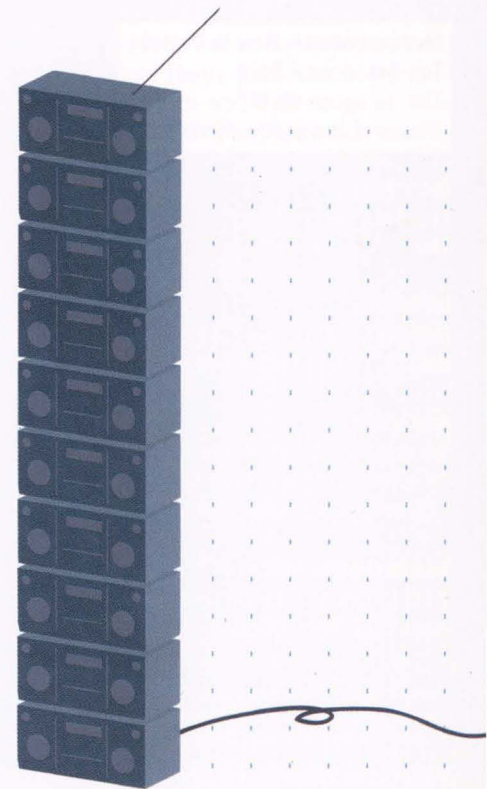
above
Patty Chang *Shangri-La* (2005). Video still



above
Patty Chang *Shangri-La* (2005). Video still

CONTENTS

- 01 LETTER FROM THE DIRECTOR
- 02 CAMPAIGN FOR THE *NEW NEW MUSEUM*
- 03 EXHIBITION: FIONA TAN: *CORRECTION*
- 04 EXHIBITION: AERNOUT MIK: *REFRACTION*
- 05 EXHIBITION: PATTY CHANG: *SHANGRI-LA*
- 06 MEDIA LOUNGE EXHIBITIONS
- 07 NEW MUSEUM GALA AND LIMITED EDITION NEWS
- 08 NEW MUSEUM STORE
- 09 MEMBER NEWS
- 10 MUSEUM EVENTS
- 11 TRUSTEES AND BENEFACTORS
- 12 CALENDAR



1 Tarikh Korula *Chop-10* (2005)
From *Transmission II: Airborne*

New Museum News is a publication
of the New Museum of Contemporary Art

NEW MUSEUM

New Museum of Contemporary Art / Chelsea
556 West 22nd Street (at 11th Avenue), New York, NY 10011

phone 212-219-1222

fax 212-431-5328

store 212-343-0460

email newmu@newmuseum.org

web www.newmuseum.org

Sign up for regular email updates: news@newmuseum.org

Museum hours - New in Chelsea

Tue-Sat noon-6PM

Thu noon-8PM*

Closed Sunday and Monday

Store hours

Tue-Sat noon-6PM

Thu noon-8PM

Directions

Subway C/E to West 23rd Street; 1/9 to 23rd Street

Bus M23 to 11th Avenue

Admission

\$6 general; \$3 students and seniors.

Free for members. Free for visitors 18 and under.

*Thursdays \$3 admission 6-8PM

Administrative Offices

210 Eleventh Avenue (between 24th and 25th Streets), 2nd fl.
New York, NY 10001

The New Museum of Contemporary Art receives general operating support from the Carnegie Corporation, the New York State Council on the Arts, the New York City Department of Cultural Affairs, JPMorgan Chase, and members of the New Museum.

Media Lounge exhibitions and public programs are supported by the Rockefeller Brothers Fund, the Jerome Foundation and the New York State Council on the Arts.

Design: Kstudio/Christiaan Kuypers, Noah Aronsson-Brown



2005 has started auspiciously for the New Museum.

Our capital campaign for the new New Museum on the Bowery has gained considerable momentum with a generous lead gift to name the building by **Mitzi and Warren Eisenberg** and **Susan and Leonard Feinstein**. The gift was given as a challenge grant, which was met in the early days of 2005, and in total has brought an additional \$14,000,000 to the campaign. The Trustees and Producers Council in particular stepped up and together with other generous contributors successfully met the challenge!

We will break ground on the Bowery later this year and anticipate opening the new building in 2007. The capital campaign will continue through the opening as we build crucial support for public programs and our endowment. We have seen a growing groundswell of support for this project, which is important for New York City and contemporary art. Our building will become an instant landmark and is already helping to transform a neighborhood by the news of its arrival. If you haven't yet participated in the campaign and would like to, this is a great time to get involved!

I would also like to welcome new trustees who have joined the board in the last six months: **Susan Feinstein**, **William Ford** and **Henry Buhl**. Our board has grown from 11 to 32 members over the past five years, and their range of expertise, interests and generations has helped to solidify and galvanize our ambitions as an institution.

Our New Group has also expanded. In February 2005, **Amy J. Goldrich** and **Kimberly Stallvik** were appointed co-chairs of the New Group Steering Committee, succeeding our stalwart leader **Christine Zehner**. We thank her for her stellar work the past three years!

This past September, we were able to effortlessly shift our programming to our temporary space in Chelsea, and already it feels like we have always been there. The *East Village USA* exhibition, closing on March 19, received great critical acclaim and has drawn record numbers of visitors. We are extremely proud of this exhibition and the accompanying catalogue, which represent the kind of exhibition and curatorial freedom that the New Museum stands for, distinguishing us from many other institutions. This spring and summer we will debut the first three commissions from the Three M Project—our collaboration with the Museum of Contemporary Art, Chicago, and the Hammer Museum, Los Angeles—from artists **Patty Chang**, **Aernout Mik** and **Fiona Tan**.

I look forward to seeing you at the New Museum frequently during this busy season!

Lisa Phillips

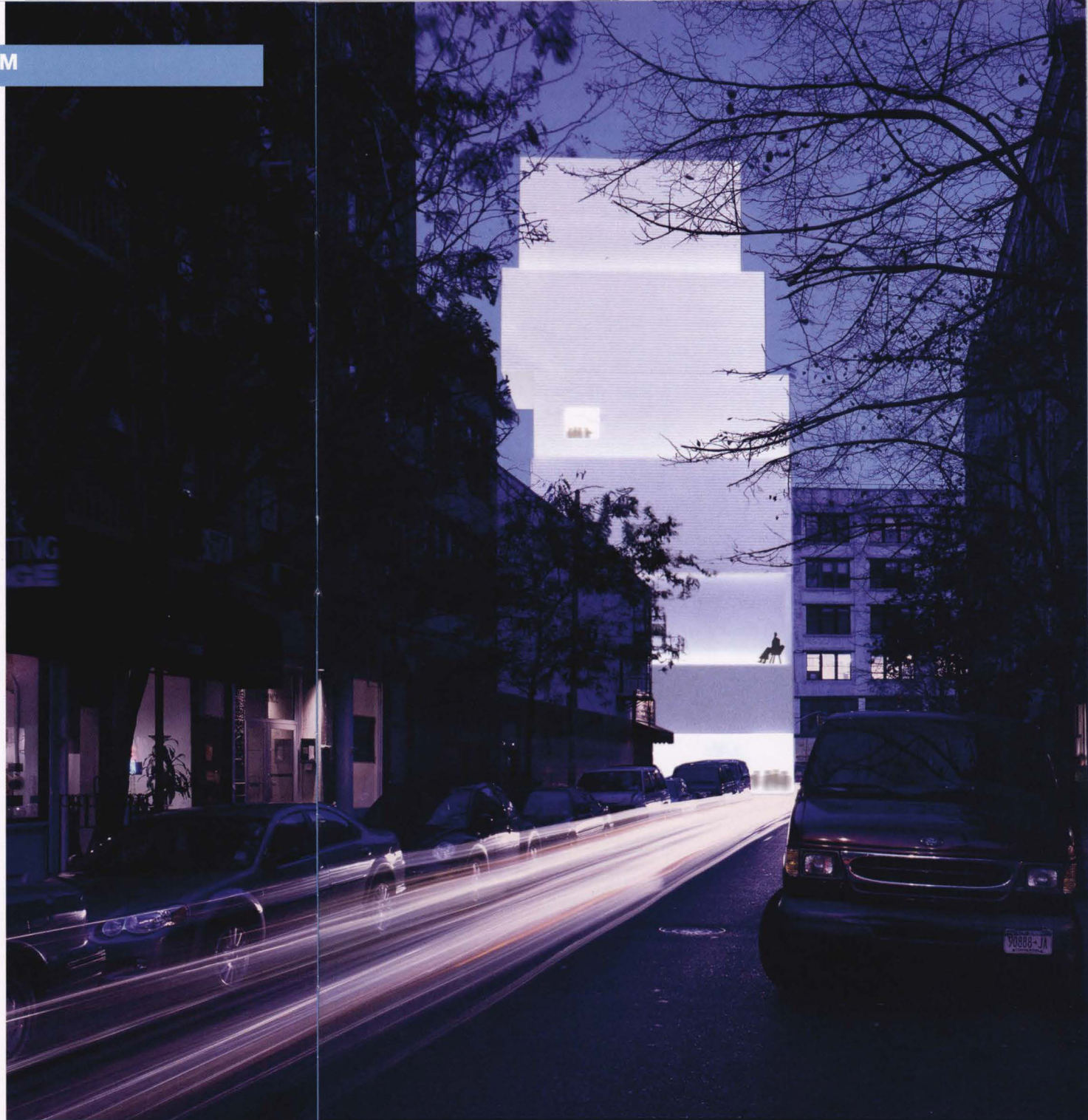
Henry Luce III Director

TRUSTEES PLEDGE LEAD GIFT TO NAME BUILDING

It is our great pleasure to announce that **Mitzi and Warren Eisenberg** and **Susan and Leonard Feinstein** have pledged a campaign lead gift to name the New Museum's new building. This extraordinary gift, given as a challenge grant that has now been met, has brought a total of \$14,000,000 to the New Museum's capital campaign.

Mitzi Eisenberg and Susan Feinstein are both Trustees of the New Museum. Mitzi joined the board in 2003, and Susan in 2004. Warren Eisenberg and Leonard Feinstein are the co-founders and co-chairmen of the retail chain Bed, Bath & Beyond. We are extremely grateful to the Eisenbergs and Feinsteins for their exceptional generosity, which has given the campaign a tremendous boost and will enable the construction of the best possible new home for the New Museum.

For their generous in-kind contributions to the capital campaign, the New Museum would like to thank Town Crier, Ltd., Kstudio, Kitchen Club, Metro Wine, New York-Tokyo, Sake Service Institute and B. United International.



1 View of the new New Museum, looking east from Elizabeth and Prince Streets.

Design + visualization: Sejirma + Nishizawa/SANAA
Site photography: Christopher Dawson

THREE M PROJECT

In March 2004, the New Museum of Contemporary Art, the Hammer Museum, Los Angeles, and the Museum of Contemporary Art, Chicago, announced the Three M Project—a new collaborative model for commissioning, exhibiting and acquiring significant new works of art by emerging contemporary artists. The partners are pleased to present the results of our first year of collaboration, three works that will be shown at each venue: Fiona Tan: *Correction*, Aernout Mik: *Refraction*, and Patty Chang: *Shangri-La*. Generous support for the Three M Project has been provided by the Peter Norton Family Foundation and the American Center Foundation.

FIONA TAN: CORRECTION

04/09/05 - 06/04/05

This spring, the New Museum will exhibit **Fiona Tan's** first project completed in the United States. In keeping with Tan's interest in exploring stereotypes and representation through her artwork, *Correction* consists of filmed portraits of over 300 inmates and guards in four United States correctional facilities. With these living, breathing portraits, Tan forces the viewer to focus on a distinct segment of society generally rendered invisible to the mainstream population, giving them, in the artist's words, "a face and identity, rather than just more statistics." At the same time that she explores the social elements of the U.S. prison system, Tan deftly creates a new genre of portraiture, neither still photography nor moving image, but one fit for a complex contemporary world.



1 Fiona Tan *Correction* (2004)
Video still

PUBLIC PROGRAM

04/09/05 **CONVERSATIONS
WITH ARTISTS 2-3:30PM**

Artist Fiona Tan talks with Dan Cameron, Senior Curator at Large.

Fiona Tan: Correction also received support from the Mondriaan Foundation, Amsterdam, and The Consulate General of The Netherlands in New York. The exhibition catalogue is supported in part by the Elizabeth Firestone Graham Foundation.

2 Fiona Tan filming *Correction* (2004)



AERNOUT MIK: REFRACTION

06/23/05 - 09/10/05

Aernout Mik's work forcefully combines video and architecture to transform exhibition spaces into vivid, unsettling tableaux of irrational human behavior. Long a fixture in major European exhibitions, Mik will make his New York museum premiere with this brand-new video work, *Refraction*.

Inspired by the mass media obsession with catastrophe and crisis, Mik's protagonists often behave as if they were in a state of shock: wandering aimlessly, not interacting, refusing to grasp what has befallen them. Far from taking responsibility for their actions, they seem either weirdly oblivious to their fate or hopelessly swallowed up in it. In *Refraction*, we enter the frame moments after an accident has occurred: an overturned bus fills the screen, rescue workers are scrambling, and traffic appears backed up for miles. Missing are any victims of the accident. As the camera shifts its perspective from the inside of the bus to the back-up of cars to the ditch in front of the bus, an unspoken antagonistic energy slowly builds between various players in the scene.

PUBLIC PROGRAM

06/25/05 **CONVERSATIONS WITH ARTISTS 2-3:30PM**

Artist Aernout Mik talks with Dan Cameron, Senior Curator at Large.

Aernout Mik: Refraction also received support from the Mondriaan Foundation, Amsterdam, and The Consulate General of The Netherlands in New York.

PATTY CHANG: SHANGRI-LA

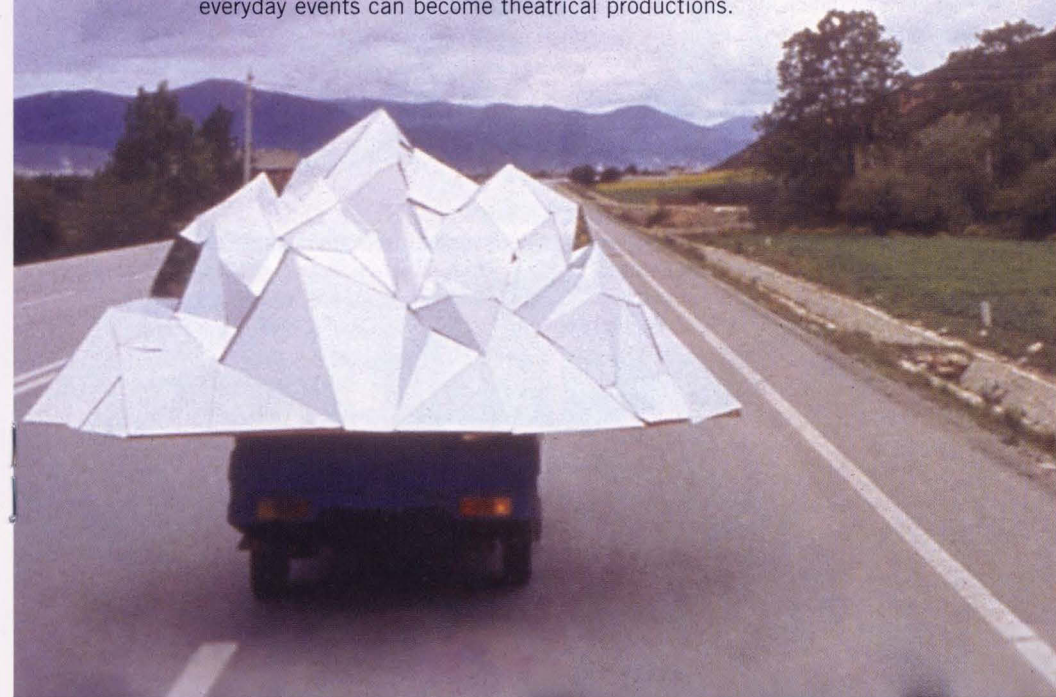
07/08/05 - 09/10/05

Patty Chang is well known for using her body as a medium of expression to blur the boundaries of video, photography and live performance. *Shangri-La* was inspired by Chang's visit to a rural village in the Yunnan province in southwest China recently designated "Shangri-La" by the Chinese government—a reference to the fictional land created by British author James Hilton in his 1933 novel *Lost Horizon*. Located in the high plains overlooking the Himalayan Mountains, rural towns such as these are rapidly being developed into tourist destinations for the newly rich Chinese middle class. Chang's video installation explores the fusion of the mythical ideal of "Shangri-La" as expressed in Hilton's novel with the physical realities of creating and marketing a tourist destination. Through a narrative created in collaboration with residents of Shangri-La, Chang searches to distinguish between fictional construction and the reality of daily life.

PUBLIC PROGRAM

07/14/05 **CRITICAL VOICES 6:30-8PM**

Artist Fiona Tan and curator Trevor Smith lead a panel discussion on how everyday events can become theatrical productions.



1 Aernout Mik *Refraction* (2005)
Photo Florian Braun, Berlin

2 Patty Chang *Shangri-La* (2005)
Video Still

CONTAGIOUS MEDIA

04/28/05 - 06/04/05

In an era where the proliferation of information has been accelerated through technological advancement and the Internet, how do people decide what information they will share with others? *Contagious Media* explores this question in an exhibition of recent projects developed specifically to quickly spread socio-political messages through the digital equivalent of “word of mouth.”

Contagious media projects seem deceptively simple at first glance, but in fact originate in a critical and satirical context. The projects create socially relevant portraits of issues such as labor rights or the subtleties of racism—all illustrated with a touch of humor. Some of the most well known contagious media projects were created by **Jonah Peretti**, Director of Research and Development and Leader of the Contagious Media Group at Eyebeam. Peretti's *BlackPeopleLoveUs* and a series of e-mails with a Nike representative concerning sweatshops are examples of projects promoted via e-mail to a small group of people, yet eventually seen by millions and covered by international media. The exhibition will recreate, using contagious media, some of the stunning social dynamics created by *BlackPeopleLoveUs* and another project, *The Rejection Hotline*. *Contagious Media* is organized by Rachel Greene, Adjunct Curator.

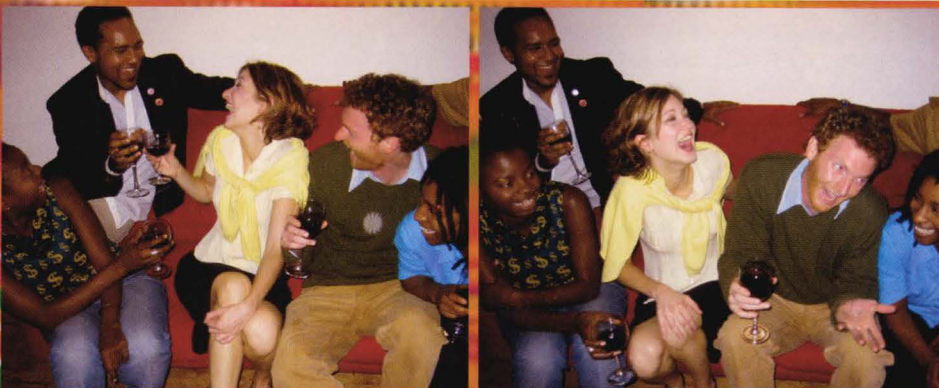
PUBLIC PROGRAMS AT EYEBEAM (540 WEST 21ST STREET)

05/07/05 **CONTAGIOUS MEDIA WORKSHOP** 12-6PM

Research & Development fellows at Eyebeam hold a workshop demonstrating how to create contagious media.

05/19/05 **CONTAGIOUS MEDIA PANEL** 7-9PM

Jonah Peretti hosts a panel of contagious media users from varied professions.



1 Chelsea Peretti and Jonah Peretti *BlackPeopleLoveUs.com* (2002). From *Contagious Media*

TRANSMISSION II: AIRBORNE

04/09/05 - 06/04/05

As commercial uses for wireless technologies multiply, artists are simultaneously considering the same media for creative expression. *Airborne*, the second in the New Museum's *Transmission* series, profiles new projects by New York-based artists investigating the aesthetic and sonic aspects of the wireless spectrum.

Artists in the exhibition were selected from an open call for submissions and include **31 Down**, **Mendi+Keith Obadike**, **LoVid** (**Tali Hinkis** and **Kyle Lapidus**), **Melissa Dubbin** and **Aaron Davidson**, **neuroTransmitter**, **Paul Davies**, and **Tarikh Korula**. Through conceptual projects, networked installations, live streams and audio-visual works, each artist's project illuminates the otherwise invisible airwaves that surround us. *Airborne* is organized by Anne Barlow and Defne Ayas, in collaboration with www.free103point9.com, a non-profit media arts organization. Visit www.newmuseum.org for more information.

PUBLIC PROGRAM

05/04/05 **TRANSMISSION II: AIRBORNE PERFORMANCE** 6:30-8PM

Artists Damian Catera, Joshua Fried and Gregory Whitehead present performances that mix, manipulate, and respond to conventional content broadcast on the radio.

RHIZOME ARTBASE 101

06/23/05 - 09/10/05

Rhizome ArtBase 101 includes some of the most important works and brightest talents in new media art, which includes website design, performance, software and games. This exhibition showcases a selection of historically significant Internet art works organized around salient critical or formal themes—such as Games, Appropriation, and Cyborg Identity—all of which are preserved in Rhizome.org's online archive of new media art, the *ArtBase*. Presenting the Internet as a medium rivaling photography or sculpture in its ability to sustain diverse critical and formal explorations, *Rhizome ArtBase 101* introduces the museum visitor to historical and contemporary topics in Internet-based art creation. Artists in the exhibition include **Barbara Lattanzi**, **Michael Mandiberg**, **Prema Murthy**, **Rtmark**, and **Alexei Shulgin**. *Rhizome ArtBase 101* is organized by Rachel Greene, Adjunct Curator.

Media Lounge exhibitions and public programs are supported by the Rockefeller Brothers Fund, the Jerome Foundation and the New York State Council on the Arts.

2 background image: LoVid (Tali Hinkis and Kyle Lapidus) *Decay Hatching* (2004). From *Transmission II: Airborne*

SAVE THE DATE!

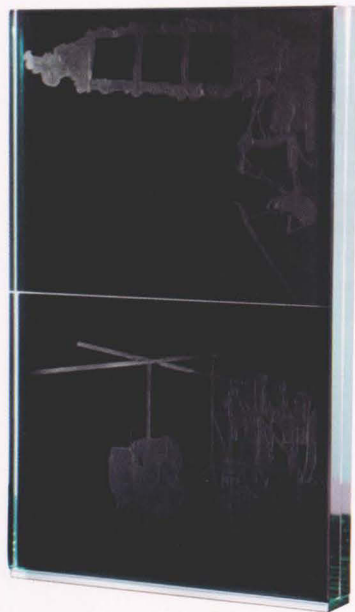
SUNDAY APRIL 17, 2005 ANNUAL GALA AND LIVE AUCTION

Our highly anticipated spring Gala and Live Auction will be held at the newly reopened Cipriani Wall Street. Don't miss this evening honoring **Cindy Sherman**, one of the world's leading visual artists. Legendary filmmaker **John Waters** will introduce Cindy Sherman and **Sir Elton**

John will serve as the event's Honorary Chair. Our signature Live Auction—a great opportunity to support the New Museum—will consist of work by some of today's most sought after artists. We've sold out in recent past, so buy your tickets early. For more information or to purchase tickets, please contact Special Events at (212) 219-1222 x223 or aservino@newmuseum.org.

THE ARMORY SHOW 2005

The New Museum will participate in *The Armory Show: The International Fair of New Art* for the fifth consecutive year. The Armory Show 2005 will take place from March 10-14, 2005, and the New Museum booth will be located on Pier 92. Limited editions by **Hiroshi Sugimoto**, and **Bruce Nauman** are among the works available. Also on sale will be **Point of View: An Anthology of the Moving Image**, our unique publishing project featuring work by eleven contemporary artists working in film and video. For additional information and directions to *The Armory Show*, please visit www.armoryshow.com. For more information about *Point of View* and the New Museum's Limited Edition Program, visit www.newmuseum.org.



1 Hiroshi Sugimoto *La Boîte en Bois (the Wooden Box)* (2004)



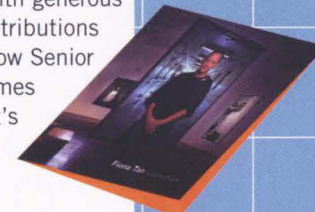
2 *Point of View: An Anthology of the Moving Image*, box set

ORDER NOW!

To pre-order any of these titles before they sell out, e-mail: books@newmuseum.org

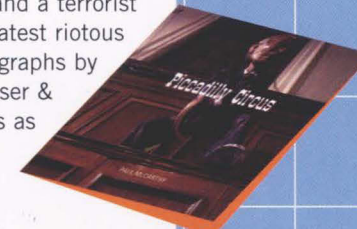
FIONA TAN: CORRECTION \$20

This exhibition catalogue documents Fiona Tan: *Correction* with generous color illustrations and a group of insightful essays, with contributions by Joel Snyder and Tessa Jackson. Francesco Bonami, Manilow Senior Curator of the Museum of Contemporary Art, Chicago, assumes the voice of a prisoner in a text that complements the artist's visual project.



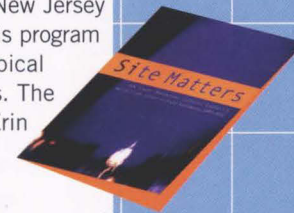
PAUL McCARTHY: PICADILLY CIRCUS/ BUNKER BASEMENT \$95

A president (George W. Bush), multiple Queen Mums, and a terrorist (Osama bin Laden) are the protagonists of McCarthy's latest riotous scenario, illustrated in this two volume edition of photographs by the artist. Published by Scalo in collaboration with Hauser & Wirth Gallery, *Piccadilly Circus/Bunker Basement* serves as an extensive documentation of McCarthy's unrestrained performances and over-the-top installations.



SITE MATTERS \$45

From 1997 to 2001, over 140 artists set up studios in temporarily vacant space provided by the Port Authority of New York and New Jersey in the upper reaches of the World Trade Center's Tower 1. In this program retrospective, *Site Matters* documents an exceptional and atypical breadth of projects by some of today's significant young artists. The catalogue features essays by Olu Oguibe, Anthony Vidler, and Erin Donnelly, with an introduction by Liz Thompson.

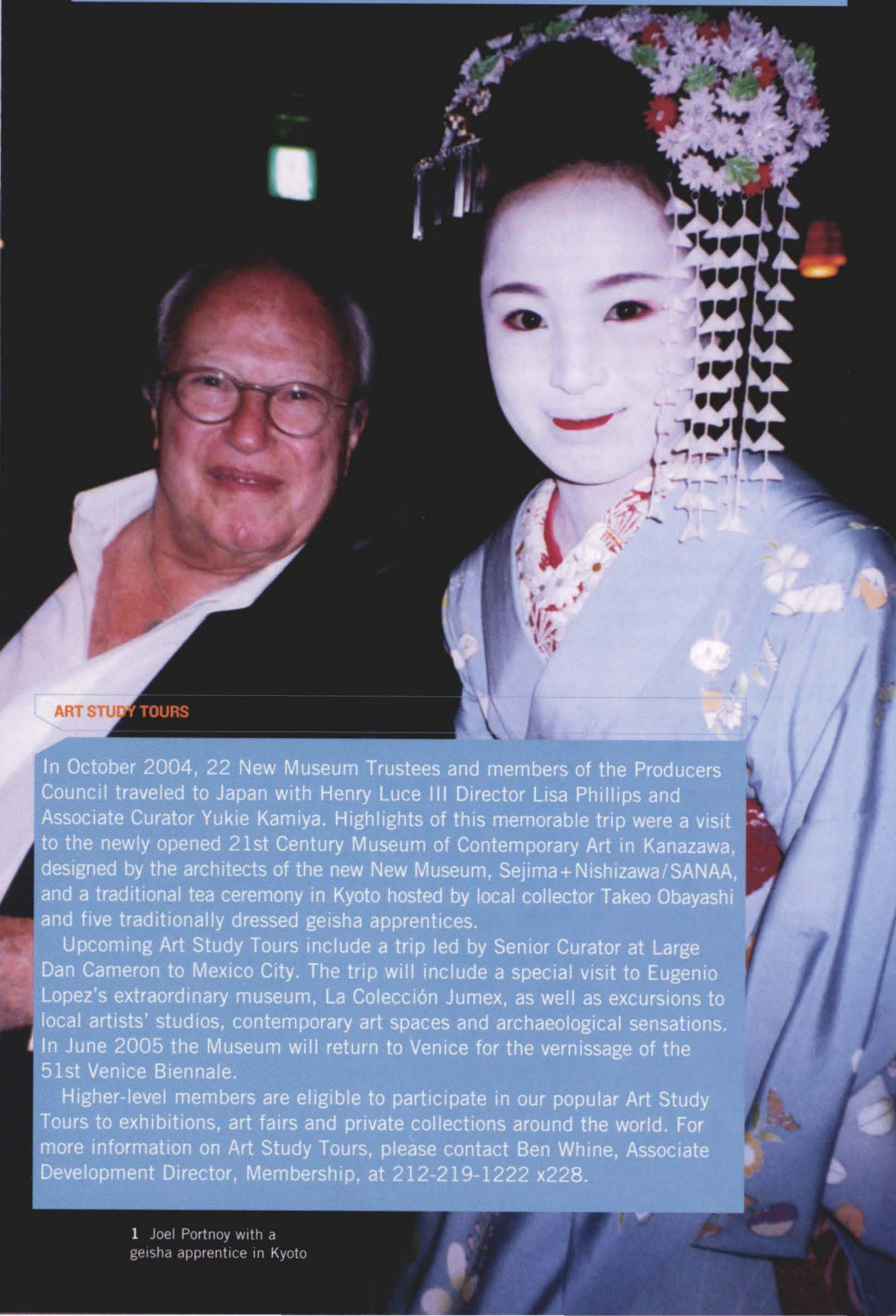


EL CROQUIS I21/I22: SEJIMA+NISHIZAWA/SANAA 1998-2004 \$108.50

This double issue publication features an interview with the architects as well as documentation of 34 buildings and projects produced over the last six years by SANAA and the individual offices of Sejima & Associates and Ryue Nishizawa. Work includes the Christian Dior Building, 21st Century Museum of Contemporary Art, Kanazawa, various residential projects and plans for the New Museum of Contemporary Art in New York.



Remember, New Museum members receive 10% off any purchase and a 20% discount on all New Museum merchandise.



ART STUDY TOURS

In October 2004, 22 New Museum Trustees and members of the Producers Council traveled to Japan with Henry Luce III Director Lisa Phillips and Associate Curator Yukie Kamiya. Highlights of this memorable trip were a visit to the newly opened 21st Century Museum of Contemporary Art in Kanazawa, designed by the architects of the new New Museum, Sejima+Nishizawa/SANAA, and a traditional tea ceremony in Kyoto hosted by local collector Takeo Obayashi and five traditionally dressed geisha apprentices.

Upcoming Art Study Tours include a trip led by Senior Curator at Large Dan Cameron to Mexico City. The trip will include a special visit to Eugenio Lopez's extraordinary museum, La Colección Jumex, as well as excursions to local artists' studios, contemporary art spaces and archaeological sensations. In June 2005 the Museum will return to Venice for the vernissage of the 51st Venice Biennale.

Higher-level members are eligible to participate in our popular Art Study Tours to exhibitions, art fairs and private collections around the world. For more information on Art Study Tours, please contact Ben Whine, Associate Development Director, Membership, at 212-219-1222 x228.

1 Joel Portnoy with a geisha apprentice in Kyoto

EAST VILLAGE TO UPTOWN



On September 18, 2004, members and guests celebrated the opening of the New Museum's temporary home in Chelsea featuring *Adaptive Behavior* and *Rules of Crime: Kayle Brandon & Heath Bunting*. Artist Alex Villarar gave a special screening of his work *Upward Mobility* on the façade of the building. The Sixth Annual Altoids Curiously Strong Collection opened at the New Museum on October 28, 2004.

The New Group Party 04 was held at the Calvin Klein flagship store on November 15, 2004, and drew over 400 guests eager to see the one-of-a-kind decorative items by contemporary artists and listen to a live performance by musician Buck 65. Co-chairs Carlos Mota and Yvonne Force Villareal helped make the evening a resounding success.

And on December 8, 2004, many past and present East Village residents and artists turned out for the opening of *East Village USA*, an exhibition invoking the legendary art and club scene of the early 1980s.

At the New Group Party 04 at Calvin Klein:

- 1 Olivia Chantecaille, Kim Vernon and David Duchovny
- 2 Ruth Root and Yvonne Force Villareal
- 3 Buck 65 performs

At the Altoids opening:

- 3 A.A. Bronson and Marc Kranhoff

At the East Village USA opening:

- 4 Peter Halley, Lisa Phillips and Fab 5 Freddy
- 5 Laura Skoler and Gracie Mansion
- 6 Marguerite Van Cook and James Romberger

At the Adaptive Behavior opening:

- 7 Robert Melee

Photographs by Patrick McMullan

II TRUSTEES AND BENEFACTORS

TRUSTEES

Saul Dennison
President

James C.A. McClennen
Vice President and Treasurer

Paul T. Schnell
Vice President

Laura Skoler
Vice President

Dieter Bogner
James-Keith Brown
Henry M. Buhl
Jon Diamond
Mitzi Eisenberg
Susan Feinstein
William E. Ford
Stephanie French
John Friedman
Sunny Y. Goldberg
Allen A. Goldring
Manuel E. Gonzalez
Ellie Gordon
Ruth Horowitz
Dakis Joannou
Michèle Gerber Klein
Joan Lazarus
Toby Devan Lewis
Tim Nye
William A. Palmer
Steven M. Pesner
Nancy Portnoy
Ron Rosenzweig
Jerome L. Stern
Mark Tribe
Christopher E. Vroom
Dianne Wallace
John S. Wotowicz

Henry Luce III
Life Trustee

Marcia Tucker
Founding Director Emerita

Lisa Phillips
Henry Luce III Director, Ex Officio

PRODUCERS COUNCIL

Joanne Leonhardt Cassullo
Rebecca and Martin Eisenberg
Carol and Arthur Goldberg
Lisa Ivorian Gray
and Hunter Clark Gray
Susan Hancock
Maren Hensler
Bonnie and Bernard Hodes
Barbara Horowitz
Angeliki Intzides
Ellen Kern
Ilene Kurtz Kretzschmar
and Ingo Kretzschmar
Ken Kuchin and Bruce Anderson
Paul J. Leaman, Jr.
Rosina Lee Yue
and Bert A. Lies, Jr.
Jane K. Lombard
Scott J. Lorinsky
Iris Z. and James P. Marden
Carol McFadden
Byron Meyer
George P. Mills
Burton S. Minkoff
Kathleen O'Grady
Jennifer McSweeney
and Peter Reuss
Craig Robins
June and Paul Schorr
Kimberly and Tord Stallvik
Wiesje and Jack van Hulst
Neda Young

BENEFACTORS

Support for the Museum's general operations and programs received between 07/01/04 and 12/31/04

Altoids
Milton and Sally Avery Arts Foundation
Calvin Klein
Cultural Services of the French Embassy
Deutsche Bank Americas Foundation
Horace W. Goldsmith Foundation
Agnes Gund and Daniel Shapiro
The Keith Haring Foundation
Joanne Leonhardt Cassullo
The Henry Luce Foundation
MTV Networks
Consulate General of the Netherlands
New York City Department of Cultural Affairs

New York State Council on the Arts
Peter Norton Family Foundation
Plaza Construction
May and Samuel Rudin Family Foundation
Time Warner
The Norman and Rosita Winston Foundation

WELCOME NEW MEMBERS!

Patron

Martin Zubatkin

New Group Dual/Institutional

Ricardo De Oliveira
and Robin Renzi
Susie Kravets and Mark Wehby
Florence and Ken Umezaki

New Group

Marissa Alperin and John Lowe
Orit Ben-Shtrit
Tillmann Bronner
Lisa Harris
Maureen Mahony
Leanne Rekow
Scott Sanders
Sara Tecchia
Marc van Cauwenbergh

Associate

Ruth Hardinger
and C. Michael Norton
Robert G. Keller
James MacGregor
and Claire Montgomery
Bella Meyer and Martin Kace
Amy Morel
Bruce Raben and Emily Happe
Aphrodite and George Roumell
Carrie Shapiro



1 John Paul Richard *Evidencia #001* (2004)
From *Rhizome ArtBase 101*

2 Fiona Tan *Correction* (2004)
Video still

MARCH

ART STUDY TOUR: MEXICO CITY
Thu.3-Mon.7
Call 212-219-1222 x228 for more information.

THE ARMORY SHOW 2005
Thu.10-Mon.14
The New Museum booth at The Armory Show 2005 is located at Pier 92, Booth X03. Visit www.thearmoryshow.com for details. New Museum members receive free or reduced admission.

EAST VILLAGE USA CLOSURES
Sat.19

RECENT ART IN INDIA
Sat.19 2-9PM
Trevor Smith and Alpesh Patel lead a tour of South Asian art in New York. Open to Producers Council members.

LONG ISLAND CITY: POST-MOMA
Sat.26 11AM-3PM
Yukie Kamiya leads a tour of the art institutions in Long Island City. Open to New Group members.

For more information about the benefits of becoming a Member, please call the Membership Department at 212-219-1222 x228

The New Museum Calendar is subject to change.

Visit www.newmuseum.org or call 212-219-1222 to confirm dates and times.

APRIL

MEMBERS' & PATRONS' RECEPTION FOR FIONA TAN: CORRECTION, TRANSMISSION II: AIRBORNE, AND LIVE AUCTION PREVIEW
Fri.8 6:30-9PM

FIONA TAN: CORRECTION, TRANSMISSION II: AIRBORNE, AND LIVE AUCTION PREVIEW OPEN
Sat.9 12PM

CONVERSATIONS WITH ARTISTS: FIONA TAN: CORRECTION
Sat.9 2-3:30PM
Conversation between Fiona Tan and Dan Cameron.

LIVE AUCTION PREVIEW CLOSURE
Sat.16 6PM

ANNUAL GALA AND LIVE AUCTION
Sun.17 7PM
Honoring Cindy Sherman at Cipriani Wall Street. Honorary Chair Sir Elton John. For tickets, call 212-219-1222 x223.

CONTAGIOUS MEDIA OPENS
Thu.28 12PM

CONTAGIOUS MEDIA OPENING RECEPTION
Thu.28 6-8PM

MAY

TRANSMISSION II: AIRBORNE PERFORMANCE
Wed.4 6:30-8PM
Featured artists present performances that mix, manipulate, and respond to conventional content broadcast on the radio.

CONTAGIOUS MEDIA WORKSHOP
Sat.7 12-6PM
Research & Development Fellows at Eyebeam hold a workshop demonstrating how to create contagious media. Hosted at Eyebeam, 540 West 21st Street.

STUDIO VISIT
Mon.9 7-8:30PM
Yukie Kamiya leads a visit to the studio of artist Kimsooja. Open to New Group members.

STUDIO SLAM
Sat.14 10AM-4PM
Dan Cameron, Yukie Kamiya and Trevor Smith lead a tour of artists' studios. Open to Producers Council members.

BLOGGING AND THE ARTS
Tue.17 6:30-8PM
Francis Hwang of Rhizome.org hosts a panel of local artists and critics discussing the phenomena of blogs.

JUNE

CONTAGIOUS MEDIA
Thu.19 7-9PM
Jonah Peretti hosts a panel about using contagious media in a multitude of fields. Hosted at Eyebeam, 540 West 21st Street.

NEW GROUP FIELD TRIP
Sat.21-Sun.22
Trevor Smith leads an overnight tour of collections and institutions in the Hudson Valley. Open to New Group members. Contact 212-219-1222 x228 for more information.

AN EVENING WITH ARTISTS
Wed.1 7-8:30PM
New Group members join Location One 2005 Artists in Residence for cocktails and a performance. Open to New Group members.

CONTAGIOUS MEDIA, FIONA TAN: CORRECTION, AND TRANSMISSION II: AIRBORNE CLOSE
Sat.4 6PM

ART STUDY TOUR: VENICE
Tue.7-Sat.11
Members visit the Venice Biennale. Call 212-219-1222 x228 for more information.

MEMBERS' & PATRONS' RECEPTION FOR AERNOUT MIK: REFRACTION AND RHIZOME ARTBASE 101
Wed.22 6:30-9PM

AERNOUT MIK: REFRACTION AND RHIZOME ARTBASE 101 OPEN
Thu.23 12PM

CONVERSATIONS WITH ARTISTS: AERNOUT MIK: REFRACTION
Sat.25 2-3:30PM
Conversation between Aernout Mik and Dan Cameron.

RHIZOME COMMISSIONS
Tue.28 6:30-8PM
A viewing of Rhizome's 2005 Net Art Commissions.

JULY

MEMBERS' & PATRONS' RECEPTION FOR PATTY CHANG: SHANGRI-LA
Fri.8 6:30-9PM

PATTY CHANG: SHANGRI-LA OPENS
Sat.9 12PM

CRITICAL VOICES: PATTY CHANG: SHANGRI-LA
Thu.14 6:30-8PM
Patty Chang leads a panel discussion with Trevor Smith.

SEPTEMBER

AERNOUT MIK: REFRACTION, PATTY CHANG: SHANGRI-LA AND RHIZOME ARTBASE 101 CLOSE
Sat.10 6PM



1 D. Scott Hessels, Martin Bonadeo and Michael Chu
Mulholland Drive (2004). From Rhizome ArtBase 101



1 John Paul Richard *Evidencia #001* (2004)
From *Rhizome ArtBase 101*

2 Fiona Tan *Correction* (2004)
Video still



NEW MUSEUM
of CONTEMPORARY ART