

SPRING/  
SUMMER 04

# NEW MUSEUM NEWS



## CONTENTS

- 01 LETTER FROM THE DIRECTOR
- 02 THE *NEW* NEW MUSEUM
- 03 EXHIBITION: *JOHN WATERS: CHANGE OF LIFE*
- 04 ZENITH MEDIA LOUNGE: EXHIBITIONS & EVENTS
- 05 UPCOMING EXHIBITIONS AND PROGRAMS
- 06 MEMBER NEWS
- 07 MUSEUM EVENTS
- 08 NEW MUSEUM STORE
- 09 NEW INITIATIVES
- 10 TRUSTEES AND BENEFACTORS
- 11 CALENDAR



1 John Waters  
*Sneaky JFK* (2001)



cover John Waters *Divine in Ecstasy* (1992)

above Design for new New Museum of Contemporary Art, 235 Bowery. View onto building from Prince Street. Design Architects: Sejima + Nishizawa / SANAA, Site Photography: Christopher Dawson, Visualization: SANAA

New Museum News is a publication of the New Museum of Contemporary Art

## NEW MUSEUM

583 Broadway, New York, NY 10012

(between Houston and Prince Sts.)

telephone 212-219-1222

email [newmu@newmuseum.org](mailto:newmu@newmuseum.org)

web [www.newmuseum.org](http://www.newmuseum.org)

Sign up for regular email updates: [news@newmuseum.org](mailto:news@newmuseum.org)

### Museum hours

Tue-Sun noon-6PM

Thu noon-8PM\*

Closed Monday

### Store hours

Mon-Sun noon-6:30PM

Thu noon-8PM

### Directions

**Subway** N, R to Prince St.; C, E to Spring St.; 6 to Spring St.

or Bleecker St.; F, S, V to Broadway/Lafayette

**Bus** 1, 5, 6, 21 to Houston St. or Broadway

**Car** FDR Drive to Houston St. exit, west on Houston to Broadway

### Admission

\$6 general; \$3 students and seniors.

Free for members. Free for visitors 18 and under.

\*Thursdays \$3 admission 6-8PM

The New Museum receives general operating support from the New York City Department of Cultural Affairs, the New York State Council on the Arts, and members of the New Museum.

Zenith Media Lounge is a digital and media art technology collaboration with Zenith Electronics Corporation. Zenith Media Lounge exhibitions and public programs are supported by the Rockefeller Brothers Fund, the Jerome Foundation and the New York State Council on the Arts.

Design ©Kstudio/Christiaan Kuypers, Noah Christy Brown

In November, we unveiled our design for the new New Museum. The cutting-edge, Tokyo-based firm, Sejima + Nishizawa/SANAA, has created a brilliant and stunning solution for our new facility that addresses both our future needs and the urban context. The critical response to SANAA's design has been overwhelmingly positive—*The New York Times* cited it as one of the US's top ten architectural projects of the year!

Our patrons have also demonstrated their strong support for this project. Our Board of Trustees has pledged half of the funds we must raise, with 100% participation. We have received five extremely generous lead gifts from the following Trustees: Toby Devan Lewis, Warren and Mitzi Eisenberg, Charles and Joan Lazarus, Allen and Lola Goldring, and Dakis and Lietta Joannou. Their commitments provide a strong and crucial foundation for the success of our capital campaign, and for this I would like to express my great appreciation. It takes a visionary Board to lead an institution into a new era in its history.

So, we are drawing closer to our fundraising goal, but still face a significant challenge. I encourage you to come and see the exhibition of the designs for our new home (currently on the Museum's mezzanine). I also hope you will act as our ambassador among your friends who are passionate about contemporary art, architecture and New York City.

The New Museum is the *only* museum devoted exclusively to contemporary art in a city that is a world capital of art and living artists. When our new building opens in 2006, New York will finally gain the world class contemporary art museum it deserves!

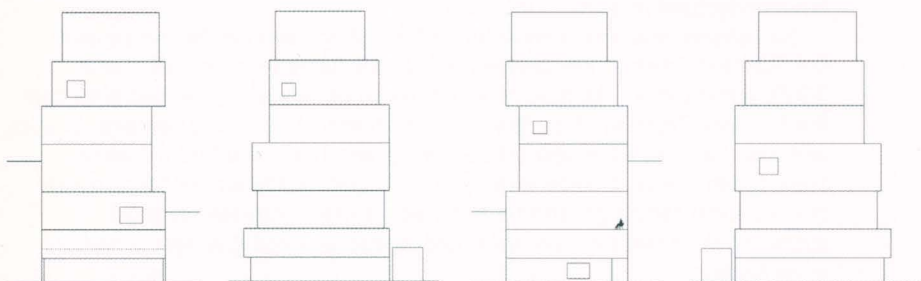
Lisa Phillips

Henry Luce III Director



# SANAA

## DESIGN FOR A NEW NEW MUSEUM



1

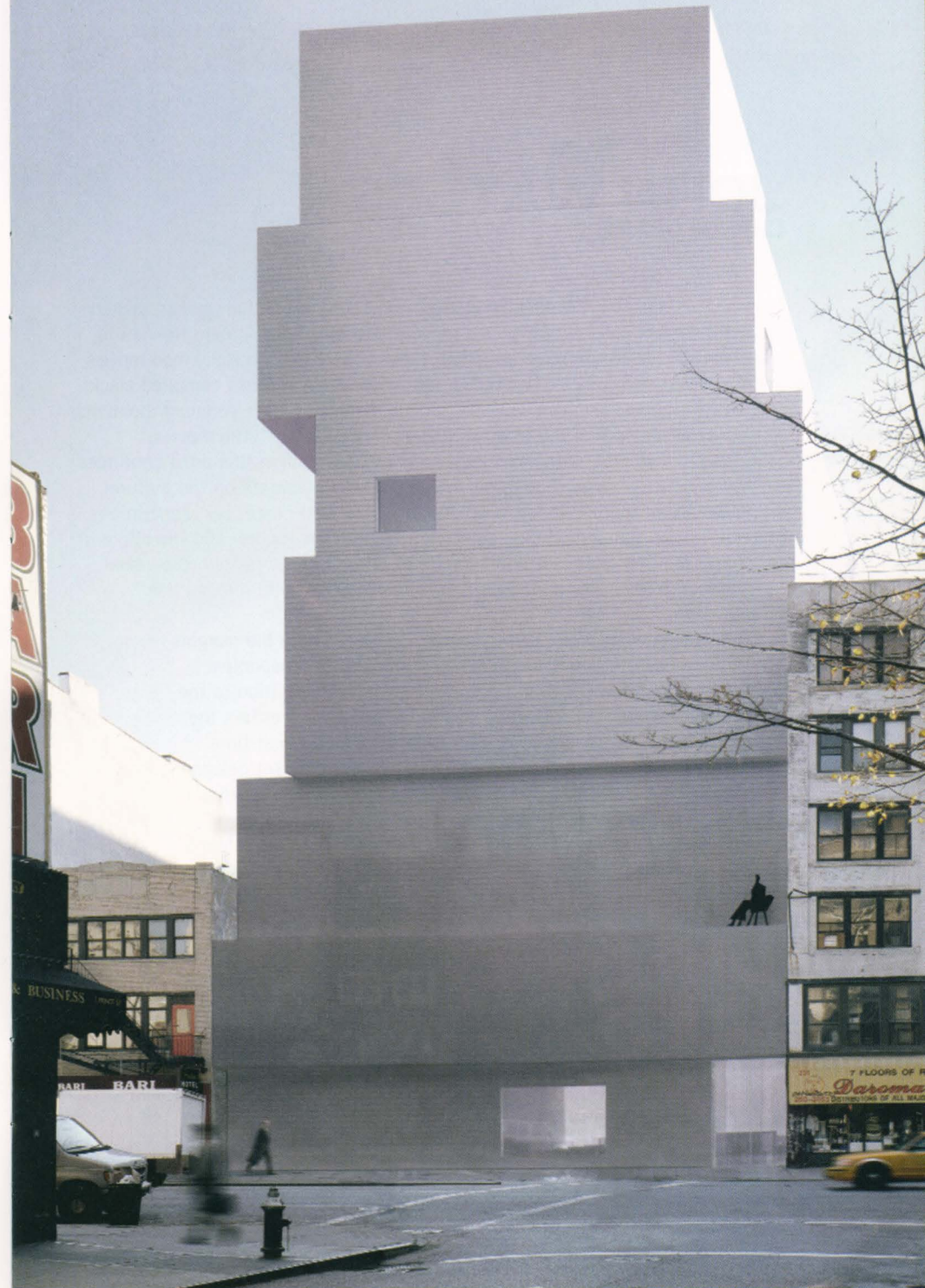
On November 13, 2003, the New Museum unveiled the much-anticipated design for our future home at 235 Bowery at Prince Street to over 70 members of the press, with introductions by Manhattan Borough President C. Virginia Fields, New York City Cultural Affairs Commissioner Kate Levin, and New Museum Board President Saul Dennison. Architects Kazuyo Sejima and Ryue Nishizawa of the Tokyo-based firm SANAA led the audience on a virtual tour of their extraordinary seven-story composition—a 60,000 square foot structure which will double the size of our current facilities on Broadway in SoHo. Scheduled to break ground in late 2004 and open to the public in 2006, the new New Museum will be the first art museum building constructed in downtown Manhattan in the city's modern history, and a significant step in the cultural revitalization of the area. For an online tour, visit [www.newmuseum.org](http://www.newmuseum.org).

### CAMPAIGN UPDATE

The capital campaign for the new New Museum is off to a great start! The design unveiling marked the launch of the campaign, with the exciting announcement that five extraordinary seven-figure pledges had been made, which, combined with 100% board participation, brought the total raised to over \$10 million. With projected revenues from the sale of the Museum's current space at 583 Broadway, we are over two-thirds of the way to the project cost of \$35 million, but we still need everyone's support to realize this vitally important project for New York and contemporary art.

For more information about our full range of giving levels, opportunities for recognition, and exclusive donor privileges, please contact Anya Lewis, Campaign Associate at 212-219-1222 x222 or [alewis@newmuseum.org](mailto:alewis@newmuseum.org).

1 The new New Museum. From left: east, south, west, and north elevations.



2 Design for new New Museum of Contemporary Art, 235 Bowery. View looking east from Prince Street. Design Architects: Sejima + Nishizawa / SANAA, Site Photography: Christopher Dawson, Visualization: SANAA

# JOHN WATERS

## CHANGE OF LIFE

Twelve years ago, John Waters, celebrated and controversial film-maker, picked up a still camera and started to take photographs off his TV screen. Re-viewing videotapes of his own movies, and later, tapes of over-the-top Hollywood movies and forgotten art films that fascinated and amused him, Waters compiled stacks of images: snippets of hilarious, rude, arcane, and sometimes poignant moments form the raw material of the artworks that Waters calls his "little movies."

In the photographic sequences included in this exhibition, the artist continues to skewer cultural symbols and stereotypes, and to elaborate on the cultural and subcultural themes that are central to all his work: race, sex, sanctimony, glamour, class, family, politics, celebrity, religion, the media, and the allure of crime. He cleverly uses still photography to reflect on the history, the visual language, and the cultural and psychological power of film-making itself.

In a career that spans forty years, Waters has successfully moved from the margins of culture into the mainstream. He has applied his iconoclastic perspective and aesthetic to film-making, writing, and now photography. In addition to the recent photographs on display, *John Waters: Change of Life* also presents the artist's three earliest films, which are being screened for the very first time since their premieres in Baltimore in the 1960s. Waters's longtime set designer, Vince Peranio, has also created a life-size, photographic replica of the artist's living room, highlighting the sources of Waters's inspiration.

*John Waters: Change of Life* is co-curated by Lisa Phillips and Marvin Heiferman. The exhibition is accompanied by a catalogue published by Harry N. Abrams, Inc., available in the New Museum Store and at [www.newmuseum.org](http://www.newmuseum.org). Following the presentation at the New Museum, the exhibition will travel internationally.

### PUBLIC PROGRAMS

03/11/04 **CRITICAL VOICES** 6:30-8PM

Marvin Heiferman moderates a panel discussion during which **Gregory Crewdson**, **A.M. Homes** and **Jim Hoberman** give their personal perspectives on the work of John Waters.

04/01/04 **CONVERSATIONS WITH ARTISTS** 6:30-8PM

New Museum Henry Luce III Director Lisa Phillips talks with artist and filmmaker John Waters. **Members at the Associate level and above are invited for cocktails with John Waters following this event.**

John Waters: Change of Life is sponsored by New Line Cinema.



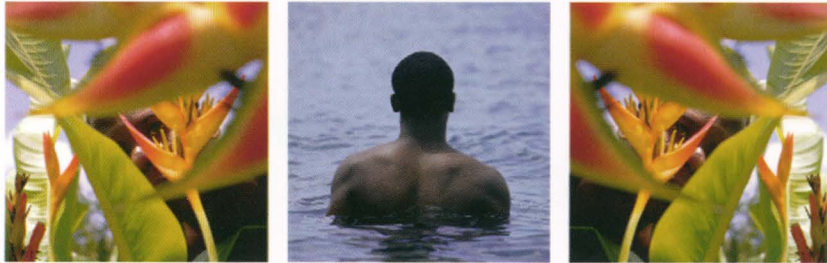
Additional support for John Waters: Change of Life is provided by Harvey S. Shipley Miller.



1 John Waters  
*The Hot Seat* (2001). Detail

02/27/04 - 04/11/04

## POINT OF VIEW AN ANTHOLOGY OF THE MOVING IMAGE



*Point of View: An Anthology of the Moving Image* is an innovative publishing project launched at the New Museum in a special Zenith Media Lounge exhibition. The exhibition features newly-commissioned film and video works by eleven leading artists of different generations and cultural perspectives: **Francis Alys, David Claerbout, Douglas Gordon, Gary Hill, Pierre Huyghe, Joan Jonas, Isaac Julien, William Kentridge, Paul McCarthy, Pipilotti Rist** and **Anri Sala**.

*Point of View*, produced by Bick Productions (Ilene Kurtz Kretschmar and Caroline Bourgeois) and the New Museum of Contemporary Art, was conceived to make accessible the work of some of the most important artists working in video, film and digital imagery today. Produced as a boxed DVD in an unlimited number, *Point of View* is the first commercially available anthology of its kind.

### PURCHASE YOUR OWN COPY OF POINT OF VIEW TODAY!

The Anthology consists of a boxed set of eleven DVDs, each containing a newly-commissioned work; an in-depth interview with the artist conducted by either Dan Cameron, senior curator at the New Museum of Contemporary Art, curator Hans Ulrich Obrist of the Musee d'Art Moderne de la Ville de Paris, or Richard Meyer, Associate Professor, Department of Art History, University of Southern California; an image library of the artist's previous work; and biographical material. *Point of View* is available through the New Museum Store and website, [www.newmuseum.org](http://www.newmuseum.org). **Be one of the first 50 to buy a copy of Point of View during the New Museum exhibition and receive a signed limited edition photograph by Anri Sala!**

*Generous funding for Point of View has been provided by Executive Directors: Jumex Collection, Mexico, and Blink Digital, New York, and Sponsor: The New Art Trust, San Francisco.*

05/15/04, 2 - 3:30PM

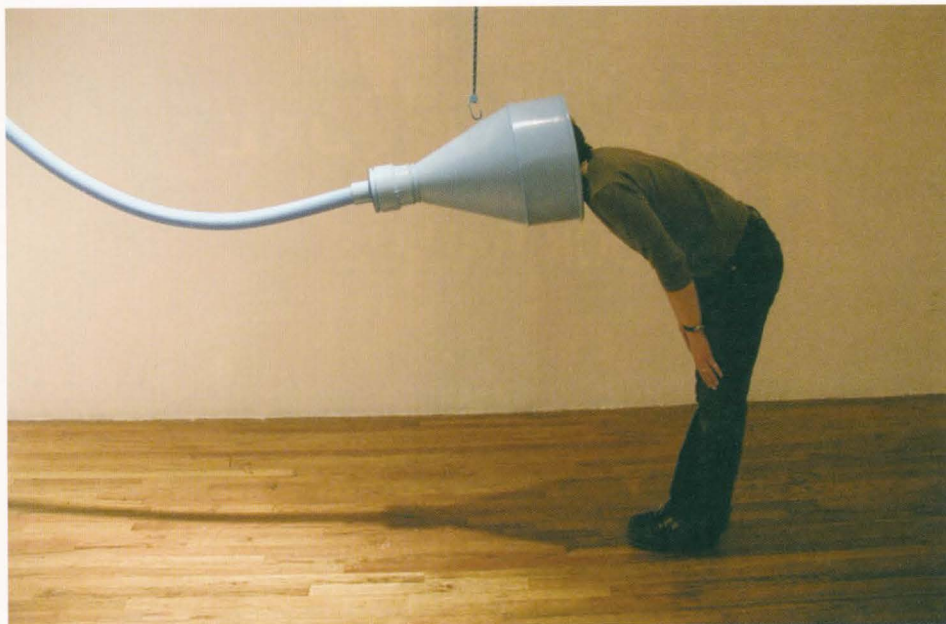
## DIGITAL CULTURE PROGRAM ONE BLOCK RADIUS

Beginning in January 2004, artists Christina Ray and Dave Mandl—known as **Glowlab**—have been examining the block on which our new building will rise (Bowery to Chrystie Street and from Stanton Street to Rivington Street). Glowlab's project, *One Block Radius*, which will continue through May 2004, provides an in-depth focus on this specific microcosm of New York City. This feature-rich urban record will include personal perspectives from diverse sources such as city workers, children, street performers and architectural historians. Engaging a variety of tools and media such as blogs, video documentation, field recordings and interviews, Glowlab will create a multi-layered portrait of the block as it has never been seen before.

Ongoing documentation of the project is accessible on [www.oneblockradius.org](http://www.oneblockradius.org), which includes audio and video clips, clickable maps, and blogs by artists and audiences invited to contribute to the project. On May 15, join the artists as they give a special walking tour around this block to present their findings to the public. *One Block Radius* is organized by Anne Barlow and Defne Ayas.

1 Issac Julien *Encore (Paradise Omeros Redux)* (2003). From *Point of View*

2 Photograph by Glowlab



In Summer 2004, the New Museum will leave its current quarters at 583 Broadway and embark on an exciting period of innovative programming before moving into our new Bowery home in Spring 2006. Visit [www.newmuseum.org](http://www.newmuseum.org) for updated information.

07/10/04 - 08/15/04

## COUNTER CULTURE

A seek-and-ye-shall-find exhibition for the adventurer in all art lovers, *Counter Culture* partners contemporary artists with shopkeepers near our future home on the Bowery. Through site-specific installations by six New York based artists, visitors will be taken on a journey to examine the zones of exchange and cultural diversity surrounding this unique neighborhood. A self-guided walking tour will take people on a path to the "interventions" installed throughout the bodegas, kitchen and restaurant supply stores, Noho boutiques and other local businesses that make up this historical area of Manhattan. Participating artists include **Flux Factory**, **Ricardo Miranda Zuñiga**, **Jean Shin**, **Julianne Swartz**, **Marion Wilson**, and **Raul Vincent Enriquez**, who will create a narrative-based walking tour for the exhibition that will be available as a downloadable MP3 on the New Museum's website. A special brochure with map will also be created for the exhibition.

Artist and curator-led walking tours will be scheduled throughout the exhibition. Please check our website at [www.newmuseum.org](http://www.newmuseum.org) for dates and times. *Counter Culture* is organized by Melanie Cohn.

1 Julianne Swartz *How Deep is Your* (2003). From *Counter Culture*  
Photo courtesy of Christinrose/Josée Bienvenu Gallery



11/2004 - 03/2005

## EAST VILLAGE USA

*East Village USA* revisits the sprawling, renegade art scene that flourished in the East Village during the 1980s. Representing traditional media such as painting, sculpture and photography, while emphasizing the film, music and performance of the period, the exhibition will contain works by more than fifty visual artists, as well as numerous films, videos, listening stations and documentary materials. Covering the stylistic gamut from graffiti and punk expressionism to Neo-Geo and appropriation, *East Village USA* also examines the key exhibition sites and events that shaped the neighborhood's sensibility at the beginning of the 1980s: the Times Square Show, Colab, Fashion Moda, the Real Estate Show, Club 57, the Mudd Club and the Pyramid. Additional material will outline an historical context for the East Village as a cultural outpost, beginning with the Beat and co-op gallery scene of the 1950s, and continuing through the counter-cultural era as represented by the impact of the Fillmore East, La Mama, Anthology Film Archives, St. Marks Poetry Project and Millenium Cinema in the 1960s and 1970s. Organized by Dan Cameron.

### UPCOMING PROGRAMS

Other upcoming programs include the New York unveiling of the Sixth Annual **Altoids Curiously Strong Collection** and an exhibition of the work of British artist **Heath Bunting**.

Support for East Village USA has been provided  
by the Horace W. Goldsmith Foundation.

2 Kiely Jenkins *Home of the Brave* (1983).  
From *East Village USA*



# SAVE THE DATE!

SUNDAY, APRIL 18, 2004

## ANNUAL GALA BENEFIT & LIVE AUCTION

Our annual gala is no ordinary fundraising event and is consistently noted as one of the most lively and fun of the season's social events.

The Gala will be held on Sunday, April 18, 2004 at the elegant Cipriani 42<sup>nd</sup> Street. **Marc Jacobs** is the Honorary Chair and longtime contemporary art patron **Martin Margulies** will be honored.



Individual tickets start at \$1,000 and tables of 10 start at \$5,000. Buy early!

For more information, contact Special Events at 212-219-1222 x223.

## ART STUDY TOURS

Higher-level members are eligible to participate in our popular program of Art Study Tours to exhibitions, art fairs, and private collections around the world.

New Museum members recently enjoyed five days in Istanbul, where they visited the 2003 Istanbul Biennial, curated by New Museum Senior Curator Dan Cameron.

In December 2003, members made a return visit to Art Basel Miami Beach. They also toured the outstanding private collection of Irma and Norman Braman, attended a dinner hosted by Craig Robins in the Design District, and received a private tour of the Miami Art Museum and Miami Art Central by Ella Cisneros and Manuel Gonzalez.

Upcoming trips include Texas (April 2004), with stops in Dallas, Fort Worth, Houston, and Donald Judd's Chinati Foundation in Marfa, and Athens (June 2004), to attend the opening of Monument to Now, an exhibition organized by Trustee Dakis Joannou's DESTE Foundation.

A trip to Japan has been scheduled for Fall 2004 to visit the new 21st Century Museum of Art in Kanazawa, designed by Sejima + Nishizawa/SANAA, architects of the new New Museum building. In October 2004, an art study tour will be organized to visit the opening of the Carnegie International in Pittsburgh.

## LIMITED EDITION NEWS

Visit us at the Armory Show, March 12-15!  
Pier 92, Booth 318.

The New Museum's renowned Limited Edition Program continues. Last year we introduced two works by **Olafur Eliasson** and **Jim Hodges** which sold out immediately! Many wonderful editions are currently available, including works by **Mona Hatoum**, **Bruce Nauman**, **Maya Lin**, **Rob Pruitt**, and others. Visit [www.newmuseum.org](http://www.newmuseum.org) and go to the *Shop* section for more information and images.

New editions are offered to higher level members first, so upgrade to Patron Level membership and receive special offers on select Limited Editions!

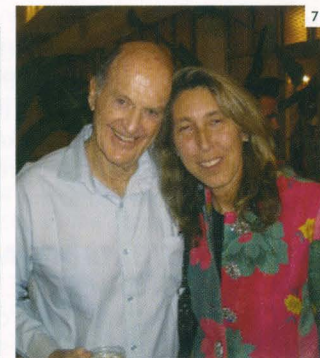
*The New Museum's Limited Edition Program is supported in part by the Laura Skoler Limited Edition Fund.*

# FALL FESTIVITIES

On October 9, 2003, the worlds of art and dance collided at the New Museum opening of *Trisha Brown: Dance and Art in Dialogue, 1961-2001*, curated by Hendel Teicher. In conjunction with the exhibition, the Trisha Brown Dance Company performed their 2003-2004 season at the New Museum.

The New Group Party 03 was held on November 6, 2003, at the Maritime Hotel in Chelsea. 400 attendees helped raise \$78,000 for museum exhibitions and programs through tickets sales and a silent auction of ten one-of-a-kind Fendi Chef Bags decorated by emerging contemporary artists. The New Group Party 03 was sponsored by Fendi. Special thanks to our co-chairs, Anh Duong and Carlos Mota!

FENDI



At the Trisha Brown opening:

- 1 Artist Fujiko Nakaya
- 2 Choreographer Trisha Brown
- 3 Thelma Golden, Henry Luce III Director Lisa Phillips, and artist Terry Winters

At the New Group party:

- 4 Co-Chair Carlos Mota with Anne McNally
- 5 Artist E.V. Day
- 6 Co-Chair Anh Duong, Simon de Pury, and Yvonne Force Villareal

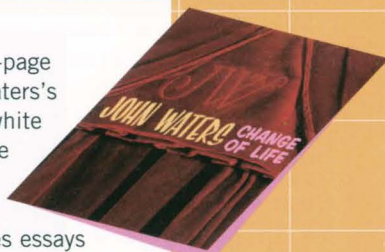
On the Miami Art Study Tour

- 7 Trustee Jerome Stern and Henry Luce III Director Lisa Phillips
- Photographs: 1-6 by Patrick McMullan, 7 by Trevor Smith

## DIVINE TRASH

### JOHN WATERS: CHANGE OF LIFE \$37.50

Edited by Lisa Phillips and Marvin Heiferman, this 160-page exhibition catalogue provides an in-depth analysis of Waters's photographic work, with over 200 color and black-and-white reproductions of Waters's photographs. Also included are stills from his never-before-seen underground films, as well as popular culture objects and mass media images from Waters's personal collection. The catalogue features essays by Lisa Phillips and Marvin Heiferman, as well as contributions by Gary Indiana, Brenda Richardson, and Todd Solondz.



### ART: A SEX BOOK \$29.95

John Waters has teamed up with acclaimed art critic and curator Bruce Hainley to offer a unique, provocative, and personal interpretation of sex and sexuality today through the window of contemporary art. Andy Warhol, Larry Clark, Richard Kern, Sarah Lucas, Cy Twombly, Lily van der Stokker, Vincent Fecteau, Karen Kilimnik, and Paul McCarthy are among the seventy well-known artists whose work they have selected.



### CRACKPOT: THE OBSESSIONS OF JOHN WATERS \$13

*Crackpot*, originally released in 1986, is John Waters' brilliantly entertaining litany of odd and fascinating people, places and things. From Baltimore to Los Angeles, from William Castle to Pia Zadora, from the National Enquirer to Ronald Reagan's colon, Waters explores the depths of our culture. And he dispenses useful advice along the way: how not to make a movie, how to become famous (read: infamous), and of course, how to most effectively shock and make our nation's public laugh at the same time. Loaded with bonus features, this new special edition is guaranteed to leave you totally mental.



### THE ULTIMATE JOHN WATERS DVD COLLECTION \$89.98

This 7 DVD gift set contains 6 classic John Waters films plus a bonus DVD with extra features including interviews, deleted scenes and outtakes. The gift set includes *Pink Flamingos*, *Female Trouble*, *Desperate Living*, *Polyester*, *Hairspray*, and *Pecker*, plus the must-have bonus DVD! Special features include audio commentary, deleted scenes, interviews, outtakes, and more.



#### RHIZOME.ORG BECOMES AN AFFILIATE OF THE NEW MUSEUM



In September 2003, the New Museum announced an affiliation with Rhizome.org, a leading online platform for the global new media art community. Rhizome.org was founded in 1996 as a central resource for the exchange of ideas and information for the burgeoning new media art community. It is best known for its online archive of over 1,000 works of new media art, known as the ArtBase, as well as various online discussion groups and publications.

The affiliation is a natural progression of previous collaborations between Rhizome.org and the New Museum, presenting an opportunity to create programs of unique quality and relevance in the field of new media art by expanding media art audiences and educational initiatives. Rhizome's offices are now located at the New Museum.

#### NATIONAL ALLIANCE OF ART MUSEUMS

In other exciting news, the New Museum has teamed up with the **Museum of Contemporary Art** (Chicago) and the **UCLA Hammer Museum** (Los Angeles) to form an alliance to jointly commission, exhibit and acquire significant works by contemporary international artists. The entrepreneurial spirit shared by the three institutions facilitates this unique collaboration, which will enable important projects to be shown to a broad national audience, linked through these three major American cities and cultural centers. The institutions previously collaborated with success on the recently co-organized exhibitions *William Kentridge*, which was presented at the MCA Chicago and the New Museum, and *Lee Bontecou: A Retrospective*, exhibited at the MCA Chicago and the UCLA Hammer Museum.

Each project co-commissioned by the alliance will be presented at all three venues and will be accompanied by a jointly produced publication. Three artists have already been selected to participate—**Fiona Tan**, **Patty Chang** and **Aernout Mik**. Fiona Tan has been working in film and video since the early 1990's, and has received a great deal of recognition for her exploration of issues of gender, the passage of time, and the role of anthropology in everyday life. Patty Chang uses her body as a medium in her provocative performance pieces, which also encompass installation, photography and video. Aernout Mik uses complex, multi-screen video installations to create unstable environments that transform viewers' space in a dynamic way.

**TRUSTEES**

Saul Dennison  
*President*

James C.A. McClennen  
*Vice President and Treasurer*

Paul T. Schnell  
*Vice President*

Robert J. Shiffler  
*Vice President*

Laura Skoler  
*Vice President*

Dieter Bogner  
James-Keith Brown  
Jon Diamond  
Mitzi Eisenberg  
Stephanie French  
John Friedman  
Sunny Yeddis Goldberg  
Allen A. Goldring  
Manuel E. Gonzalez  
Ellie Gordon  
Ruth E. Horowitz  
Dakis Joannou  
Joan Lazarus  
Toby Devan Lewis  
William A. Palmer  
Steven M. Pesner  
Nancy Portnoy  
Carole Rifkind  
Ron Rosenzweig  
Jerome L. Stern  
Mark Tribe  
Christopher E. Vroom  
John S. Wotowicz

Henry Luce III  
*Life Trustee*

Marcia Tucker  
*Founding Director Emerita*

Lisa Phillips  
*Henry Luce III Director, Ex Officio*

**PRODUCERS COUNCIL**

Dorothy Berwin  
and Dominique Levy  
Joanne Leonhardt Cassullo  
Jeanne and Arthur Cohen  
Rebecca and Martin Eisenberg  
Susan and Leonard Feinstein  
Carol and Arthur Goldberg  
Lisa Ivorian Gray  
and Hunter Clark Gray  
Susan Hancock  
Maren Hensler  
Barbara Horowitz  
Angeliki Intzides  
and Angelika Frangou  
Ellen Kern  
Michèle Gerber Klein  
and Jeffery Klein  
Ilene Kurtz Kretzschmar  
and Ingo Kretzschmar  
Ken Kuchin and Bruce Anderson  
Paul Leaman, Jr.  
Rosina Lee Yue  
and Bert Lies, Jr.  
Jane K. Lombard  
Scott J. Lorinsky  
Carol McFadden  
Byron Meyer  
George P. Mills  
Burton Minkoff  
Wendy Keys and Donald Pels  
Jennifer McSweeney  
and Peter Reuss  
Craig Robins  
Dianne Wallace  
and Lowell M. Schulman  
Wiesje and Jack van Hulst  
Neda Young

**BENEFACTORS**

*Major gifts and bequests received  
between 07/01/03 and 12/31/03*

Anonymous  
Barbara Gladstone  
Melva Bucksbaum  
and Raymond Learsy  
Henry M. Buhl  
Con Edison  
Department of Cultural Affairs  
Estate of Blanche Risa Sussman

Fendi  
Carol and Arthur Goldberg  
The Greenwall Foundation  
Horace W. Goldsmith Foundation  
Jerome Foundation  
JPMorganChase  
The Leonhardt Foundation  
MTV Networks  
New Line Cinema Corporation  
NYSCA  
Penny McCall Foundation  
PEOPLE  
The Progressive Corporation  
Time Warner  
The Warhol Foundation

**WELCOME NEW MEMBERS!**

**Patron**

Sheila and Michael Ashkin  
Barbara J. Bloemink  
Susan and Lewis Manilow  
Barbara and Howard Morse  
Mark Rosenthal  
Nancy D. and Morton E. Spitzer  
Kimberly and Tord Stallvik  
Donald and Alison Weiss

**New Group**

Joshua Adler  
Naomi Goldberg  
Michael Lefkowitz  
and Ken Tyburski  
Lisa Schiff  
Michelle Ticknor  
Elizabeth Whitall  
Alissa White

**Associate**

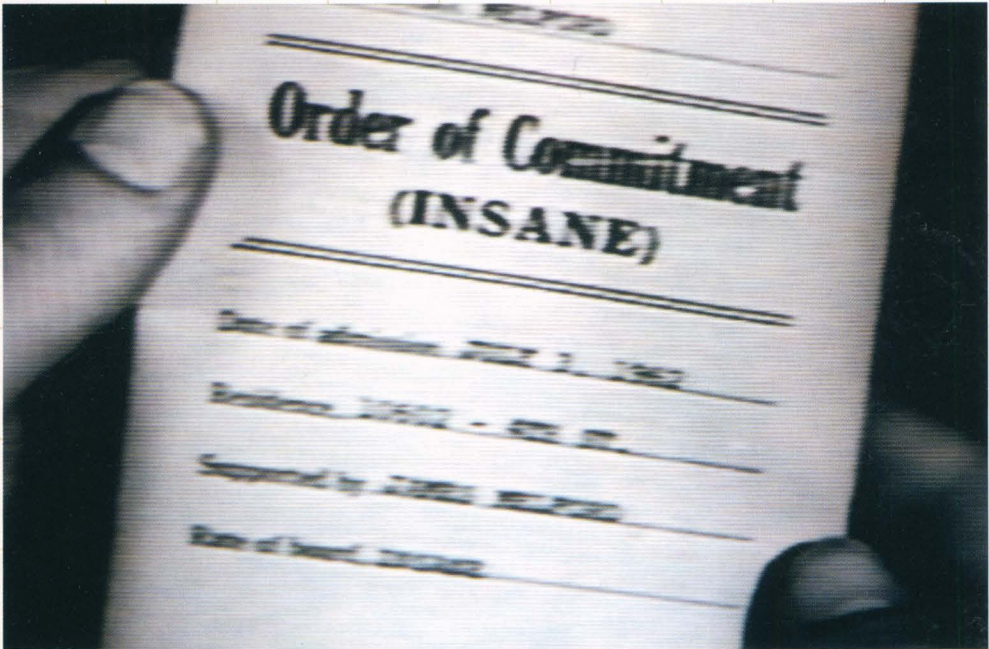
Eileen and Michael Cohen  
Suzanne L. Frye  
Alexander Gorlin  
and Debra Solomon  
Yvon Lambert  
Greg and Lina Letson  
Maya Lin and Daniel Wolf



1 Francis Alys *El Gringo* (2003)  
From *Point of View*

2 John Waters  
*Self-Portrait #2* (2000). Detail

MARCH	APRIL	MAY	JULY	AUGUST
<p><b>CRITICAL VOICES SERIES</b>  <b>Thu.11 6:30-8PM</b>                      A panel discussion with Gregory Crewdson, A.M. Homes and Jim Hoberman, moderated by Marvin Heiferman, in conjunction with the exhibition <i>John Waters: Change of Life</i>.</p>	<p><b>CONVERSATIONS WITH ARTISTS: JOHN WATERS: CHANGE OF LIFE</b>  <b>Thu.1 6:30-8PM</b>                      Conversation between John Waters and New Museum Director, Lisa Phillips.</p>	<p><b>DIGITAL CULTURE PROJECT</b>  <b>Sat.15 2PM</b>                      Artists Christina Ray and Dave Mandl (<i>Glowlab</i>) offer a walking tour and presentation of the Lower East Side block within which the new New Museum will be built. Details at <a href="http://www.oneblockradius.org">www.oneblockradius.org</a>.</p>	<p><b>COUNTER CULTURE OPENS</b>  <b>Sat.10</b></p>	<p><b>COUNTER CULTURE WALKING TOUR</b>  <b>Sat.7 2-3:30PM</b>                      Details at <a href="http://www.newmuseum.org">www.newmuseum.org</a></p>
<p><b>PRODUCERS COUNCIL: HARLEM ARCHITECTURE</b>  <b>Sat.27 10AM</b>                      Curator Trevor Smith leads an architectural tour of Harlem for Producers Council members.</p>	<p><b>POINT OF VIEW CLOSSES</b>  <b>Sun.11</b></p>		<p><b>COUNTER CULTURE WALKING TOUR</b>  <b>Sat.10 2-3:30PM</b>                      Details at <a href="http://www.newmuseum.org">www.newmuseum.org</a></p>	<p><b>COUNTER CULTURE CLOSSES</b>  <b>Sat.14</b></p>
	<p><b>JOHN WATERS CLOSSES</b>  <b>Thu.15</b></p>		<p><b>COUNTER CULTURE WALKING TOUR</b>  <b>Sat.17 2-3:30PM</b>                      Details at <a href="http://www.newmuseum.org">www.newmuseum.org</a></p>	<p><i>For more information about the benefits of becoming a Member, please call the Membership Department at 212-219-1222 x228</i></p> <p><i>The New Museum Calendar is subject to change. Visit <a href="http://www.newmuseum.org">www.newmuseum.org</a> or call 212-219-1222 to confirm dates and times.</i></p>
	<p><b>ANNUAL GALA BENEFIT AND LIVE AUCTION</b>  <b>Sun.18 7PM-12AM</b>                      Honorary Chair Marc Jacobs. Cipriani 42nd Street. For tickets call 212-219-1222 x223</p>		<p><b>COUNTER CULTURE WALKING TOUR</b>  <b>Sat.24 2-3:30PM</b>                      Details at <a href="http://www.newmuseum.org">www.newmuseum.org</a></p>	
	<p><b>ART STUDY TOUR: TEXAS</b>  <b>Mon.26-Tue.2</b>                      Members visit Dallas, Fort Worth, Houston and Donald Judd's <i>Chinati Foundation</i> in Marfa.</p>		<p><b>COUNTER CULTURE WALKING TOUR</b>  <b>Sat.31 2-3:30PM</b>                      Details at <a href="http://www.newmuseum.org">www.newmuseum.org</a></p>	



1 John Waters *Mental* (1998). Detail



**NEW MUSEUM**  
of CONTEMPORARY ART