

**NEW**  
**235 BOWERY**  
**NEW YORK NY**  
**10002 USA**  
**MUSEUM**

TEL +1 212.219.1222  
FAX +1 212.431.5328  
newmuseum.org

## FOR IMMEDIATE RELEASE

May 29, 2008

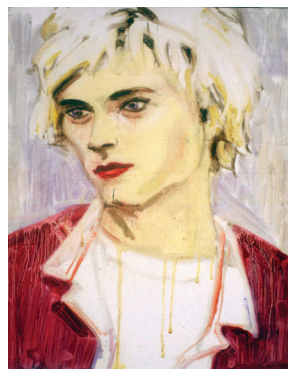
Media contact:  
Gabriel Einsohn, Communications Director  
press@newmuseum.org

### NEW MUSEUM ORGANIZES FIRST ELIZABETH PEYTON SURVEY AND INTERNATIONAL TOUR OF OVER 100 WORKS

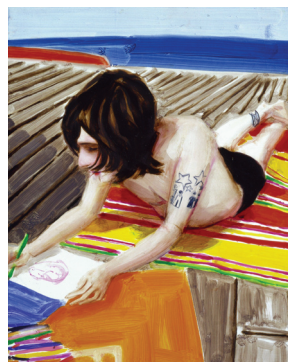
New York, NY... The New Museum announces today that it will present the first survey of Elizabeth Peyton's work, including paintings, drawings, and prints. **"Live Forever: Elizabeth Peyton"** premieres at the **New Museum** and will be on view from October 8, 2008 through January 11, 2009, and will then travel to the **Walker Art Center** in Minneapolis; the **Whitechapel Art Gallery** in London; and the **Bonnefantenmuseum**, in Maastricht, the Netherlands. The survey will include **104** works made **over the past fifteen years**. Peyton's oeuvre can be read in chapters, each of which feature portraits of friends, family, personal heroes, and fleeting passions. **"Live Forever: Elizabeth Peyton"** will offer a visual biography of the artist, and at the same time create a snapshot of the popular culture of the past decade.

The exhibition is organized by Laura Hoptman, Kraus Family Senior Curator at the New Museum. Banana Republic is the Global Sponsor of the exhibition and tour.

From her earliest portraits of musicians like Kurt Cobain, Liam Gallagher, and Jarvis Cocker to more recent paintings featuring friends and figures from the worlds of art, fashion, cinema, and politics including Rirkrit Tiravanija, Matthew Barney, and Marc Jacobs, Elizabeth Peyton's body of work presents a chronicle of America at the end of the last century.



*Zoe's Kurt*, 1995, oil on Masonite, 14 x 11 in (35.6 x 28 cm). Collection Zoe Stillpass



*Ben Drawing*, 2001, Oil on board, 10 1/8 x 8 1/4 in (25.7 x 21 cm). Carnegie Museum of Art, Pittsburgh; A.W. Mellon Acquisition Endowment Fund, 2001

MORE

A painter of modern life, Peyton's small, jewel-like portraits are also intensely empathetic, intimate, and even personal. Together, her works capture an artistic zeitgeist that reflects the cultural climate of the late-twentieth and early-twenty-first centuries.

Peyton emerged as a vanguard voice in the return to narrative figuration in contemporary painting in the 1990s, and is among a small group of artists to develop a peculiar hybrid of realism and conceptualism. Although her paintings reference nineteenth-century modernist painting—from Eduard Manet to John Singer Sargent—Peyton processes these masters through an intimate understanding of twentieth-century artists such as David Hockney, Alex Katz, and above all, Andy Warhol. Like Warhol, Peyton's art is at the service of the culture it captures. A brilliant colorist with a razor-sharp graphic sense, her paintings are enormously seductive in form and content, celebrating the aesthetics of youth, fame, and creative genius. They are also testaments to Peyton's deeper passion for beauty in all its forms—from the elevated to the everyday. Ultimately, Peyton's paintings are evidence of a dedication to the creation of a new kind of popular art. Steeped in history, her work aspires to bridge the gap between art and life.



*Matthew*, 2008, Oil on board, 12 1/2 x 9 in (31.8 x 22.9 cm). Private Collection

The exhibition will be accompanied by a comprehensive catalogue co-published by the New Museum and Phaidon, Ltd. Designed by the award-winning Graphic Thought Facility, it will feature essays by Iwona Blazwick, critic, curator and director of the Whitechapel Art Gallery in London; New York poet John Giorno; and Laura Hoptman, Kraus Family Senior Curator at the New Museum. The book will also include a large section of artworks, photographs, and ephemeral material designed in collaboration with Peyton herself. Support for the accompanying publication is provided by the J. McSweeney and G. Mills Publications Fund at the New Museum.

#### **ABOUT THE NEW MUSEUM**

Founded in 1977, the New Museum is Manhattan's only dedicated contemporary art museum and among the most respected internationally, with a curatorial program known for its global scope and adventurousness. With the inauguration of our new, state-of-the-art building on the Bowery, the New Museum is a leading destination for new art and new ideas.

# # #