

PPG

ALV

LAD

BUE

RAI

YAO

PNL

BJM

RGN

OAU

SOF

CYB

BGF

NDJ

SCL

BOG

YVA

BZV

TBS

BJL

LBV

PPT

CAY

LBG

ORY

THF

BER

TXL

ACC

GOH

ATH

GUA

FRU

VTE

RIX

SEL

AMM

FNJ

OKO

LHR

MEX

BUH

LUX

BKO

MLA

DKR

WAW

LCY

ANK

MAD

OSL

BKK

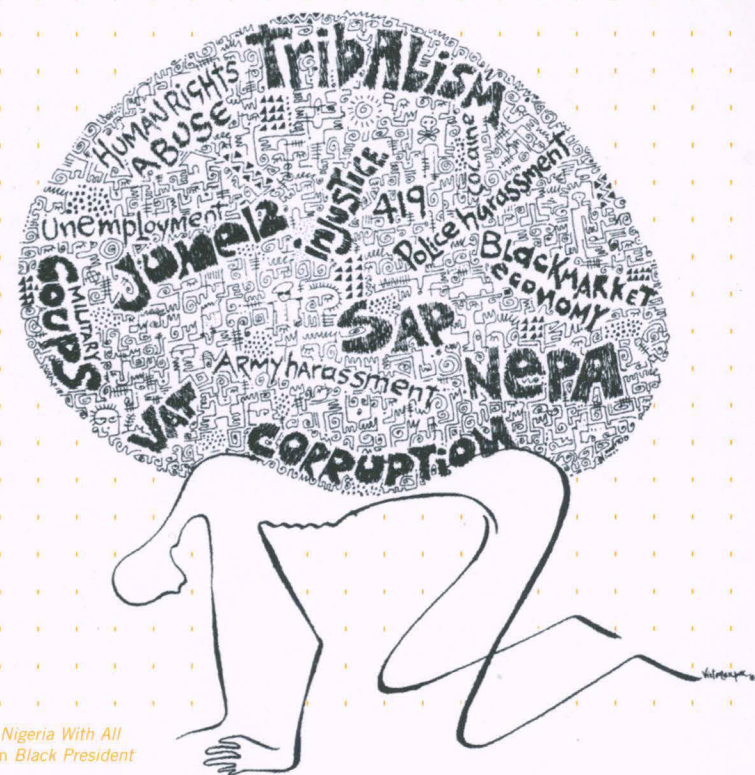
LGW



PG	ALV	LAD	BUE
M	RGN	OAU	SOF
CL	BOG	YVA	BZV
PT	CAY	LBG	ORY
CC	GOH	ATH	GUA
EL	AMM	FNJ	OKO
IX	BKO	MLA	DKR
AD	OSL	BKK	LGW

## CONTENTS

- 01 LETTER FROM THE DIRECTOR
- 02 THE NEW MUSEUM ANNOUNCES PLANS TO BUILD!
- 03 ZENITH MEDIA LOUNGE: EXHIBITIONS & EVENTS
- 04 EXHIBITION: *LIVING INSIDE THE GRID*
- 05 EXHIBITION: *JOSÉ ANTONIO HERNÁNDEZ-DIEZ*
- 06 EXHIBITION: *BLACK PRESIDENT: THE ART AND LEGACY OF FELA ANIKULAPO-KUTI*
- 07 NEW MUSEUM STORE
- 08 MEMBER NEWS
- 09 TRUSTEES AND BENEFACTORS
- 10 MUSEUM EVENTS
- II CALENDAR



1. Viktor Ekpu *To Serve Nigeria With All My Strength* (1994). From *Black President*





**cover** Langlands & Bell *Frozen Sky* (2002)  
From *Living Inside the Grid*

**above** Egbert Trogemann *Cash* (2001)  
From *Living Inside the Grid*



## GENERAL INFORMATION

New Museum News is a publication  
of the New Museum of Contemporary Art

## NEW MUSEUM

583 Broadway, New York, NY 10012  
(between Houston and Prince Sts.)

telephone 212-219-1222

email [newmu@newmuseum.org](mailto:newmu@newmuseum.org)

web [www.newmuseum.org](http://www.newmuseum.org)

Sign up for regular email updates: [news@newmuseum.org](mailto:news@newmuseum.org)

### Museum hours

Tue-Sun noon-6PM

Thu noon-8PM\*

Closed Monday

### Store hours

Mon-Sun noon-6:30PM

Thu noon-8PM

### Directions

Subway N, R to Prince St.; C, E to Spring St.; 6 to Spring St.  
or Bleecker St.; F, S, V to Broadway/Lafayette

Bus 1, 5, 6, 21 to Houston St. or Broadway

Car FDR Drive to Houston St. exit, west on Houston to Broadway

### Admission

\$6 general; \$3 students and seniors.

Free for members. Free for visitors 18 and under.

\*Thursdays \$3 admission 6-8PM

The New Museum has received major stabilization support for 2003 operations  
and programs from the Andrew W. Mellon Foundation and the Booth Ferris Foundation.

The New Museum receives general operating support from the New York City  
Department of Cultural Affairs, the New York State Council on the Arts, and members  
of the New Museum.

Designed by ©Kstudio. Printed by Town Crier, Ltd.

## 01 LETTER FROM THE DIRECTOR

This is an extraordinarily exciting time for the New Museum. After two years of planning, we recently announced that we are moving forward with plans for a new facility. We have acquired a parking lot at Bowery and Prince Streets which will be the future home of the New Museum scheduled to open in late 2005. The new New Museum will be a beacon for contemporary art at the crossroads of several dynamic neighborhoods—SoHo, NoLiTa, NoHo, the Lower East Side, Little Italy, and Chinatown. We will use innovative architecture to create a distinctive destination for contemporary art, double our exhibition space, and provide added public amenities. The New Museum will be a magnet for tourists and other arts groups and will significantly enhance the current revival of the Bowery. A bridge between east and west and in the heart of Manhattan's downtown creative community, our new Museum will address the needs of a contemporary art museum in the 21st Century. The architect will be selected in March with an exhibition to follow in the coming months.

As we develop these plans, the Museum will continue its dynamic program at 583 Broadway. In February we will present a major thematic exhibition, *Living Inside the Grid*, featuring 24 emerging international artists. Organized by Dan Cameron, this is his first group show for the New Museum since he joined the staff as Senior Curator in 1995. We are very proud to introduce the 24 artists in this exhibition from countries as diverse as Denmark and Slovenia to a New York audience. Many of the artists are having their museum debuts with this exhibition, and many are creating site specific projects for *Living Inside the Grid*. It's a timely subject, with an updated interpretation on a venerable trope—the grid.

Concurrently, *Super-ficial*, on view in the Zenith Media Lounge, is an exhibition about digital architecture that joins *Living Inside the Grid* as part of the umbrella project, *Spatial Dynamics*. The series is part of our ongoing exploration of new art and new ideas. I applaud our staff for their work in conceiving and realizing these projects.

Lisa Phillips  
Henry Luce III Director





# THE NEW MUSEUM PLANS MOVE TO THE BOWERY!



On December 10, 2002, the New Museum announced plans to build a new facility at 235 Bowery. The new building will be 60,000 square feet, twice the size of our current facility in SoHo.

The site for the future home of the New Museum is located at the crossroads of several dynamic and changing neighborhoods: the Lower East Side, NoLiTa, Little Italy,

SoHo, NoHo, and Chinatown. The New Museum will be a cultural anchor of the Bowery as it develops into a vibrant, 24-7 boulevard.

Our new home will have dramatically increased exhibition space, a new media center, expanded classrooms, and a study center. The new building will be a stimulating gathering place for the community, with more public amenities, including a café, theater, and enlarged bookstore.

## DESIGNING THE NEW NEW MUSEUM

Five international architectural firms were invited to submit design proposals for the new New Museum on the Bowery. After almost a year of research, meetings, and symposia, the short list of architects is: **Abalos & Herreros** (Madrid, Spain), **Adjaye Associates** (London, England), **Gigon/Guyer** (Zurich, Switzerland), **Kazuyo Sejima+Ryue Nishizawa/SANAA Ltd.** (Tokyo, Japan), and **Reiser+Umemoto RUR Architecture** (New York, United States).

In keeping with the New Museum's mission and identity, we actively sought promising and accomplished under-recognized firms who have yet to build in Manhattan. Following a review of the proposals, an architect will be selected in Spring 2003.



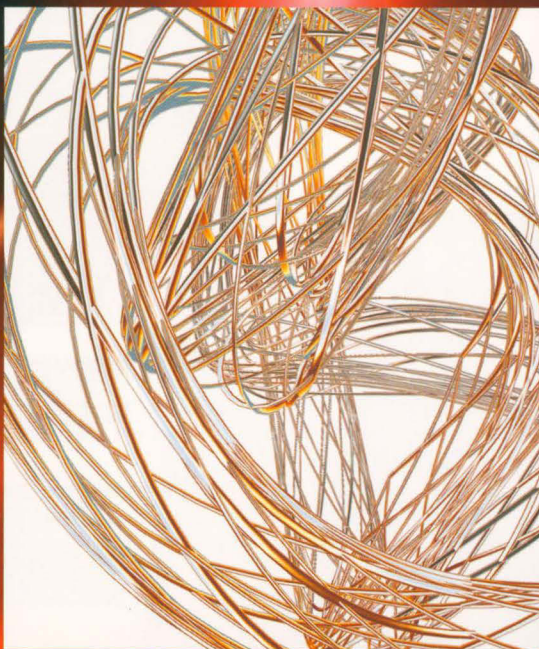
1 The New Museum's future home:  
The site at 235 Bowery, at Prince Street



01/31/03 - 04/06/03

**SUPER-FICIAL**

THE SURFACES OF ARCHITECTURE IN A DIGITAL AGE



With 3D modeling, video editing, and compositing programs, along with cutting-edge computer-aided manufacturing and rapid prototyping, the possibilities for and definitions of architectural surface are expanding previous notions of what surface is, and what it does. *Super-ficial: The Surfaces of Architecture in a Digital Age* demonstrates that architectural surface is considerably more complicated than it appears. Expanding upon notions of ephemerality, materiality, decoration, and interactivity, *Super-ficial* presents recent architectural projects that propose unique solutions for the surfaces of sites and structures.

Projects by **dbox** (Matthew Bannister, James Gibbs, and Charles d'Autremont, principals), **Jürgen Mayer H.**, **Peter Testa Architects** (Peter Testa and Devyn Weiser, principals), and **Michael Silver** will be on display in a range of media, including digital animations, architectural plans, models, and websites.

*Super-ficial* is the second in the series *Spatial Dynamics: Perceptions in a Digital Age* that explores the growing confluence of technology, architecture, and urbanism in contemporary culture. Organized by Anne Ellegood, Associate Curator, and Johanna Burton, Joanne Leonhardt Cassullo Curatorial Fellow.

**PUBLIC PROGRAM****02/28/03 DIGITAL CULTURE EVENING 6:30-8PM**

Panelists Alicia Imperiale, Tony Vidler, Fabian Birgfeld, and Teresita Fernandez discuss the works in *Super-ficial*.

1 background: dbox *Liquid Red* (2002)  
2 Peter Testa Architects *Weaver* (2001)

3 Jun Nguyen-Hatsushiba *Memorial Project, Nha Trang, Vietnam: Toward the Complex—For the Courageous, the Curious, and the Cowards* (2001)

05/07/03 - 06/29/03

**JUN NGUYEN-HATSUSHIBA**

MEMORIAL PROJECT VIETNAM

Born in Tokyo and based in Vietnam, Jun Nguyen-Hatsushiba has drawn international attention since his first major exhibition at the 2001 Yokohama Triennial. In a video entitled *Memorial Project, Nha Trang, Vietnam: Toward the Complex—For the Courageous, the Curious, and the Cowards* (2001), Nguyen-Hatsushiba merges images of Vietnamese *cyclo* (rickshaw taxi) drivers and a group of pearl divers, two of the most economically disenfranchised workers in Vietnam. In slow motion, the pearl divers soundlessly pull the *cyclos* and passengers along the floor of the sea, suggesting the arduous progress of a nation recovering from a half-century of political turmoil.

With his most recent video, *Happy New Year—Memorial Project Vietnam II* (2002), Nguyen-Hatsushiba affirms his position as one of the most innovative young Southeast Asian artists on the international scene. A traditional New Year's lion twists and turns beneath the waves while a script recalls the celebration and devastation of the Tet offensive of 1968. This project was produced by the Matrix Program of the UC Berkeley Art Museum and Pacific Film Archive, Berkeley, CA with assistance from the New Museum of Contemporary Art. The Berkeley Art Museum presentation of the exhibition was funded by the LEF Foundation.

**PUBLIC PROGRAM****05/06/03 DIGITAL CULTURE EVENING & OPENING RECEPTION 6-8PM**

Coinciding with the opening night of the exhibition, Senior Curator Dan Cameron talks with artist Jun Nguyen-Hatsushiba from 6-7PM. Reception follows.



# LIVING INSIDE THE GRID

*"The inhabited grid has become the irreducible sign of the world we live in today. From morning commutes—whether in a car moving along a highway, a high-speed train on a magnetic rail, or even a walk through the grid of city streets—all the way to the last check of our e-mails at night, we involve ourselves in a limitless, overlapping network of grids, which act in obvious or hidden ways to order our movements, our work, our thoughts, our leisure time, and probably our dreams."*

—Dan Cameron, from the catalogue for *Living Inside the Grid*.

*Living Inside the Grid* presents twenty-four international artists who use the motif of the grid as a metaphor to describe the myriad challenges of living in a world controlled by institutions, technology, and media. *Living Inside the Grid* will fill the entire museum with over thirty computer-based works, videos, photographs, drawings, sculptures, and many large-scale installations conceived especially for the exhibition. This exhibition is the third in a series called *Spatial Dynamics: Perceptions in a Digital Age* that explores the growing confluence of technology, architecture, and urbanism in contemporary culture.

The artists featured in *Living Inside the Grid* are: Absalon, Douglas Blau, Roland Boden, Jennifer Bolande, Monica Bonvicini, José Damasceno, Michael Elmgreen & Ingar Dragset, Rico Gatson, Luisa Lambri, Langlands & Bell, Mark Lombardi, Rogelio López Cuenca, Rita McBride, N55, Paul Noble, Marko Peljhan, Danica Phelps, Sean Snyder, Do-Ho Suh, Tomoko Takahashi, Ana Maria Tavares, Egbert Trogemann, Uri Tzaig, and Camille Utterback.

*Living Inside the Grid* is organized by Dan Cameron, senior curator at the New Museum, and is his first group exhibition in a U.S. museum since 1982. The exhibition will be accompanied by a 160-page full-color catalogue featuring a new essay by Cameron.

## PUBLIC PROGRAMS

03/01/03 **CONVERSATION WITH THE ARTISTS** 4:30 - 6PM

Senior Curator Dan Cameron talks with participating artists from *Living Inside the Grid*, including Monica Bonvicini and Michael Elmgreen & Ingar Dragset.

05/03/03 **TALKING ABOUT LIVING INSIDE THE GRID** 10:30AM - 6PM

In this all-day symposium, co-sponsored by the Irwin S. Chanin School of Architecture, Cooper Union, speakers including Manuel Delanda, Peter Halley, Laura Kurgan, Sean Snyder, and Susan Kozel will consider how "living inside the grid" affects our concepts of space and time. Reservations requested. Call 212-219-1222 x215.



*Living Inside the Grid* is made possible by the American Center Foundation and by the National Endowment for the Arts, a federal agency. Additional support has been provided by Eugenio Lopez, the Toby Devan Lewis Fund for Exhibitions of Emerging Artists, and the British Council.



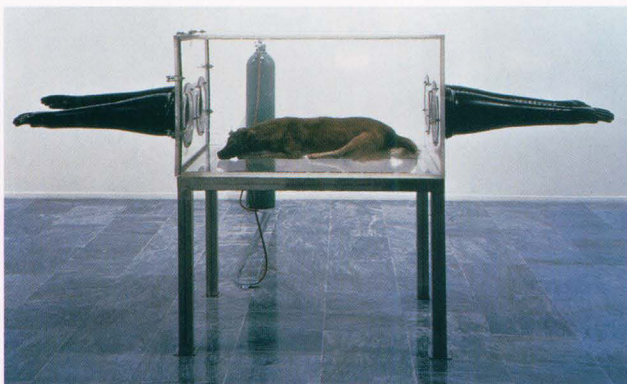
1 Jennifer Bolande  
*Appliance House* (1999). Detail



# JOSÉ ANTONIO HERNÁNDEZ-DIEZ

Inspired by urban pop culture as well as by the traditions of his native Venezuela, José Antonio Hernández-Diez evokes strong social and political statements through candid, poetic, and, at times, disturbing and irreverent multimedia works. The New Museum presents fourteen installations created between 1991 and 2000, chosen to convey several overlapping themes that inform Hernández-Diez's work: technology and the body; marginality and vernacular culture; and myth making. The first major museum exhibition in the United States of one of the most important Latin American artists of the last decade is organized by the New Museum of Contemporary Art and curated by Senior Curator Dan Cameron and Adjunct Curator Gerardo Mosquera.

*José Antonio Hernández-Diez* was exhibited at the Palm Beach Institute of Contemporary Art in Florida from September 13 - November 17, 2002, and is on view at Site Santa Fe in New Mexico from January 24 - April 6, 2003.



1

## PUBLIC PROGRAM

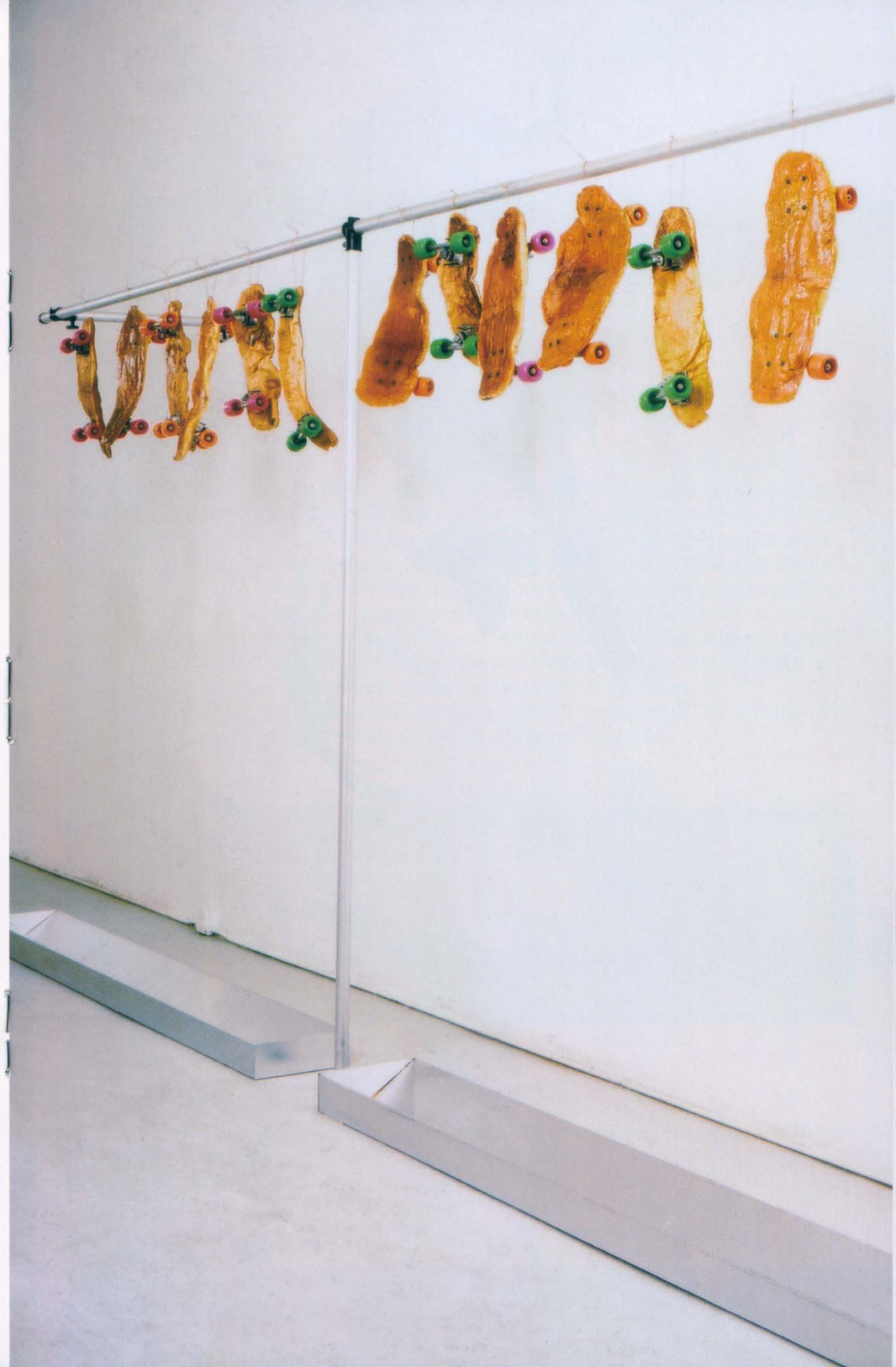
07/11/03 **CONVERSATION WITH THE ARTIST** 6:30-8PM

Senior Curator Dan Cameron talks with artist José Antonio Hernández-Diez.

*José Antonio Hernández-Diez* is made possible by generous grants from the National Endowment for the Arts, Elizabeth Firestone Graham Foundation, Colección Patricia Phelps de Cisneros, Caracas, and from Rosa and Carlos de la Cruz.

1 José Antonio Hernández-Diez  
*San Guinefort* (1991)

2 José Antonio Hernández-Diez  
*La Hermandad* (1994). Detail





## BLACK PRESIDENT

### THE ART AND LEGACY OF FELA ANIKULAPO-KUTI

Musician and activist Fela Anikulapo-Kuti created Afrobeat, the infectious fusion of American jazz and funk with the African rhythms of highlife music. Through politically-charged lyrics, electrifying stage performances, and his counter-culture lifestyle, Fela preached against social injustice and corruption. Since his death in 1997 from an AIDS-related illness, Fela's status as a pan-African icon has continued to grow.

Approximately thirty-five contemporary artists of the African Diaspora explore the influence and artistic legacy of this Nigerian legend in the group exhibition *Black President: The Art and Legacy of Fela Anikulapo-Kuti*. *Black President* presents the many sides of Fela—musical pioneer, political dissident, utopian visionary, consummate showman, husband and lover—through works of painting, drawing, sculpture, photography, mixed media and sound installation, video, film, computer animation, and music. Artists include **Sanford Biggers**, **Kendell Geers**, **Paul D. Miller** (a.k.a. **D.J. Spooky**), **Yinka Shonibare**, **Kara Walker** and **Klaus B\"urgel**, **Fred Wilson**, **Wangechi Mutu**, and many others.

*Black President* is guest curated by Trevor Schoonmaker. The exhibition will be accompanied by a fully-illustrated 250-page catalogue.



2



#### PUBLIC PROGRAMS

07/17/03 **CONVERSATION WITH THE ARTISTS** 6:30-8PM

Conversation between guest curator Trevor Schoonmaker and artists Olu Oguibe and Senam Okudzeto.

10/02/03 **CRITICAL VOICES SERIES** 6:30-8PM

New and personal perspectives on the work of Fela by Vivien Goldman, Wunmi Olaiya, Michael Veal, and Barkley L. Hendricks.

1 Barkley L. Hendricks  
*Fela: Amen, Amen, Amen, Amen* (2002)

2 Senam Okudzeto  
*Afro-Funk Lessons* (2002-03)



## CATALOGUES & BOOKS

### LIVING INSIDE THE GRID

This companion catalogue to the New Museum's highly anticipated group exhibition features an essay by Senior Curator Dan Cameron and excerpts from selected critical texts, accompanied by over 100 images.

**\$30**

Selected by the New Museum Store staff to accompany the exhibition *Living Inside the Grid*:

### TAKING PLACE: THE WORKS OF MICHAEL ELMGREEN & INGAR DRAGSET

Michael Elmgreen and Ingar Dragset's project for the Kunsthalle Zürich transformed the museum into a construction site for art. Includes essays by Markus Bröderlin and Dan Cameron, and an interview with the artists by Coco Fusco.

**\$29.95**

### PAUL NOBLE: NOBSON CENTRAL

Artist book by Paul Noble of "readable drawings" in 200 segments.

**\$25**

### DUEL BY URI TZAIG

A catalogue and poster from the Israeli artist's first solo exhibition in New York at Artists Space.

**\$20**

### DO-HO SUH

This exhibition catalogue accompanied the Serpentine Gallery's 2002 survey of Suh's sculptural and architectural installations exploring themes of cultural displacement and identity.

**\$27.50**

### BLUR: THE MAKING OF NOTHING BY ELIZABETH DILLER AND RICARDO SCOFIDIO

For Swiss EXPO 2002, Diller + Scofidio created the Blur Building. Consisting of a mist formed by 30,000 fog nozzles mounted on steel cables, the Blur Building appears to float above a Swiss lake. More than 240 pages, including four double gatefolds, document the project.

**\$35**



### LANGLANDS & BELL: SNAP ART COLLECTION 004

The artists Ben Langlands and Nikki Bell explore the complex web of relationships linking people and architecture in 28 square format color postcards bound into a book.

**\$17**

### MONICA BONVICINI

This book documents work by Bonvicini, who received an honorable mention at the Venice Biennale, and contains an interview with the artist as well as critical essays by Dan Cameron and Susanne Von Falkenhausen.

**\$18**

### JOSÉ ANTONIO HERNÁNDEZ-DIEZ

This publication accompanies Hernández-Diez's first major exhibition in the U.S. Includes essays by Senior Curator Dan Cameron, Adjunct Curator Gerardo Mosquera, and Venezuelan critics Jesús Fuenmayor and Monica Amor.

**\$25**

### BLACK PRESIDENT: THE ART AND LEGACY OF FELA ANIKULAPO-KUTI

This exhibition catalogue includes cover art designed by Fela's original album cover designer, Ghariokwu Lemi; interviews with Fela's children, Femi Kuti (Afrobeat musician) and Yeni Kuti (singer and choreographer); and essays by curator Trevor Schoonmaker and a range of poets, playwrights, music critics, art historians, and academics.

**\$30**

Selected by the New Museum Store staff to accompany the exhibition *Black President*:

### KARA WALKER: PICTURES FROM ANOTHER TIME

The first major publication on the work of the most controversial young African-American artist working today includes 70 silhouettes, prints, drawings, projected installations, and watercolors; an interview with the artist by curator Thelma Golden; and essays by critic Robert Reid-Pharr and curator Annette Dixon.

**\$29.95**

For upcoming events at the Store and to sign up for our mailing list, visit [www.newmuseum.org](http://www.newmuseum.org)

Remember... members always receive up to 20% off on Store purchases





1

## NEXT STOPS SOUTH AFRICA & ISTANBUL

2



1 William Kentridge *Felix in Pool with Megaphone* (1999)

2 Istanbul, Turkey at night  
Photo by Muammer Yanmaz

### ART STUDY TOURS

In December 2002, New Museum members enjoyed three days in Miami, where they took in the inaugural Art Basel Miami Beach art fair, several outstanding local collections, and artists' studios.

In celebration of the last stop on the William Kentridge exhibition world tour, members will travel to South Africa from March 8-18, 2003, for a trip that includes visits to artists and museums in Cape Town and Johannesburg.

Upcoming trips include a short excursion to the opening of the 50th Venice Biennale (06/11/03-06/14/03) and an Art Study Tour to the 8th International Istanbul Biennial, curated by New Museum Senior Curator Dan Cameron (09/17/03-09/22/03).

*New Museum Art Study Tours are generally open to higher level members.*

### LIMITED EDITION NEWS

This winter, we're looking forward to introducing a new neon sculptural edition by Icelandic artist Olafur Eliasson. Eliasson, whose work has included turning a river green and suspending a lawn from the outside wall of a gallery, has made very few editions and has little artwork available for purchase. The New Museum edition, a crystalline neon structure, has already garnered a tremendous amount of interest and excitement.

*New Museum limited editions are available to our higher level members first, so be sure to upgrade your membership to get early access to these great works!*

The Eliasson edition, produced by Lisa Ivorian-Jones for the New Museum, is part of the Museum's ongoing series which began in 1984. To find out more about the Limited Edition program, visit our website at [www.newmuseum.org](http://www.newmuseum.org) or call 212-979-5572.

### JOIN US IN INSTALLMENTS!

The New Museum is pleased to announce a quarterly credit card installment plan for memberships at the Associate (\$300) level and above.

Contact Ben Whine, Membership Programs Manager, at 212-219-1222 x 228 or [membership@newmuseum.org](mailto:membership@newmuseum.org).

### ANNUAL GALA

## SAVE THE DATE!

The New Museum annual Gala will be held Sunday, April 13, 2003 at Capitale! Located on the Bowery, Capitale is a prime location to celebrate the announcement of our building plans on the Bowery. This year's "Bowery Ball" in the spectacular Stanford White designed space is not to be missed!

*For more information, contact the Marketing and Special Events department at 212-219-1222 x223.*

### UPCOMING MEMBERS' EVENTS

*InsideArt* is the ongoing series of behind-the-scenes events for Associate (\$300) level members and above. Please join us for:

**03/05/03 DIGITAL ARCHITECTURE** 6:30-8PM  
Roundtable discussion on issues raised in the exhibition *Super-ficial*.

**05/28/03 LIVING INSIDE THE GRID** 6:30-8PM  
A visit to the studios of artists presenting work in *Living Inside the Grid*.



## TRUSTEES

Saul Dennison  
*President*

James C.A. McClennen  
*Vice President and Treasurer*

Paul T. Schnell  
*Vice President*

Robert J. Shiffler  
*Vice President*

Laura Skoler  
*Vice President*

Dieter Bogner  
James-Keith Brown  
Jon Diamond  
Stephanie French  
John Friedman  
Sunny Yeddis Goldberg  
Allen A. Goldring  
Manuel E. Gonzalez  
Maren Hensler  
Ruth E. Horowitz  
Dakis Joannou  
Joan Lazarus  
Toby Devan Lewis  
Steven M. Pesner  
Nancy Portnoy  
Carole Rifkind  
Ron Rosenzweig  
Jerome L. Stern  
Christopher E. Vroom  
John S. Wotowicz

Henry Luce III  
*Life Trustee*

Marcia Tucker  
*Founding Director Emerita*

Lisa Phillips  
*Henry Luce III Director,  
Ex Officio*

## PRODUCERS COUNCIL

Charles R. Borrok  
Joanne Leonhardt Cassullo  
Jeanne and Arthur Cohen  
Keith Copley  
Rebecca and Martin Eisenberg  
Carol and Arthur A. Goldberg  
Ellie and Mark Gordon  
Susan Hancock  
Barbara Horowitz  
Ellen Kern  
Ilene Kurtz Kretzschmar  
and Ingo Kretzschmar  
Ken Kuchin  
and Bruce Anderson  
Paul J. Leaman, Jr.  
Jane Lombard  
Scott J. Lorinsky  
Jennifer McSweeney  
Byron Meyer  
George P. Mills  
Burton S. Minkoff  
Wendy Keys  
and Donald Pels  
Craig Robins  
Dianne Wallace  
and Lowell M. Schulman  
Wiesje and Jack van Hulst  
Edwina von Gal  
Neda Young

## BENEFACTORS

*Major gifts received between  
07/01/02 and 12/31/02.*

Altoids  
American Center Foundation  
Bergdorf Goodman  
James-Keith Brown  
and Eric Diefenbach  
Joanne Leonhardt Cassullo  
Ellyn and Saul Dennison  
Jane Furse  
and John Friedman  
Carol and Arthur A. Goldberg  
Sunny and Brad Goldberg  
The Hearst Foundation  
Horace W. Goldsmith Foundation  
Barbara and Gedale B. Horowitz  
Jerome Foundation  
JP Morgan Chase  
Linda Heller Kamm  
Oliver Kamm  
Melva Bucksbaum  
and Raymond Leary  
Toby Devan Lewis  
Jan Rowse  
and Daniel R. Lewis  
Jennifer McSweeney  
National Endowment for the Arts  
New York City Department  
of Cultural Affairs  
New York State Council  
on the Arts  
Palm Beach Institute  
of Contemporary Art  
Nancy and Joel Portnoy  
Romenesa Foundation  
Arthur G. Rosen  
Leslie and Ron Rosenzweig  
Samuel & May Rudin Foundation  
Joanne and Paul T. Schnell  
Laura Skoler  
Charles S. Stone, III  
J. Koert Vandervoort  
Zenith Electronics Corporation

## WELCOME NEW MEMBERS!

## Patron

Judith Ripka Berk  
and Ron Berk  
Keith Innis  
Barbara and Aaron M. Levine  
William Palmer  
Harriet J. Roaman  
Thomas von Lintel

## New Group

Nathalie Angles  
Danielle Dimston  
Charles Ferguson  
Robert Goff  
and Matthew McAlpin  
Anthony J. Gordon  
Sara Meltzer  
Joyce Weinberg  
Summer M. Zimberg

## Associate

Aaron Lieber  
Jennifer Lipman  
Barbara Goldfarb  
and Fred Tepperman



## ART AND SOULS

On September 4, 2002, the New Museum and Bergdorf Goodman co-hosted *Art+Sole*, a benefit for the New Museum and the launch of Bergdorf's renovated shoe salon. Limited edition shoes created by artist/designer pairs were unveiled for sale at the party hosted by the New Group and co-chairs Carlos Mota, Anne McNally, and Nell Campbell. The shoes—designed by Damien Hirst and Manolo Blahnik; Liza Lou and Diana Broussard; Rachel Feinstein and Edmundo Castillo; Laurie Simmons and Bernard Figueroa; Konstantin and Christian Louboutin; Jeff Koons and Andrea Pfister; and Adelle Lutz and Walter Steiger—were extraordinary, with Harold Koda, curator of the Costume Institute at the Metropolitan Museum, picking up two pairs for the collection. *Art+Sole* raised \$70,000 to support the New Museum's exhibitions and programs.

During the summer months, the New Museum celebrated the openings of *Hélio Oiticica: Quasi-cinemas* and *Out of Site*. On October 30, Carroll Dunham's first museum retrospective was celebrated by Ed Ruscha, Cindy Sherman, John Waters, and 1,500 others.

## At the Art+Sole benefit:

1 Adelle Lutz, Lisa Phillips, Nessia Pope, and Nell Campbell

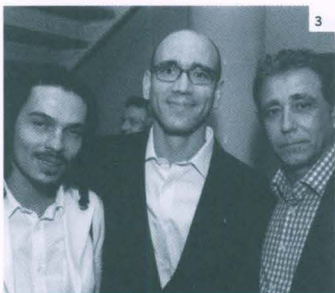
## At the Hélio Oiticica opening:

2 Visitors lounging  
3 Cesar Oiticica, Carlos Basualdo, Neville D'Almeida

## At the Carroll Dunham opening:

4 Cindy Sherman, Carroll Dunham  
5 Eilyn and Saul Dennison, president of the Board of Trustees  
6 Trustees Ron and Leslie Rosenzweig, Nancy and Joel Portnoy

All photographs by Alexandra Huddleston, except 1 by Patrick McMullan



1 José Antonio Hernández-Díez  
Jung (2000)

2 Rogelio López Cuenca *Any Time* (2000)  
From *Living Inside the Grid*



## FEBRUARY

**MEMBERS' AND PATRONS' RECEPTION FOR *LIVING INSIDE THE GRID***  
**Thu.27** 6:30-9PM  
 (all galleries)

***LIVING INSIDE THE GRID* OPENS**  
**Fri.28** 12PM  
 (all galleries)

**DIGITAL CULTURE EVENING**  
**Fri.28** 6:30-8PM  
 Panelists Alicia Imperiale, Tony Vidler, Fabian Birgfeld, and Teresita Fernandez discuss the works in *Super-ficial* (Zenith Media Lounge)

## MARCH

**CONVERSATION WITH ARTISTS**  
**Sat.1** 4:30-6PM  
 Senior Curator Dan Cameron talks with *Living Inside the Grid* artists, including Monica Bonvicini and Michael Elmgreen+Ingar Dragset

**INSIDEART EVENT: DIGITAL ARCHITECTURE**  
**Wed.5** 6:30-8PM  
 Roundtable discussion for members at the Associate level and above with curators Anne Ellegood and Johanna Burton and architects from *Super-ficial* (New Museum Store)

## APRIL

**MEMBERS' TOUR OF *LIVING INSIDE THE GRID***  
**Wed.2** 6:30-8PM  
 Senior Curator Dan Cameron leads a tour for members at the Friend/Dual level and above

***SUPER-FICIAL* CLOSES**  
**Sun.6**

**BOWERY BALL**  
**Sun.13** 7PM  
 Jan Cowles and Eugenio Lopez will be honored at the New Museum's Gala and Live Auction  
 For more information, call the Special Events Department at 212-219-1222 x223

**DIGITAL CULTURE EVENING**  
**Tues.15** 6:30-8PM  
*Lost Guides*, an audio/visual performance by artist Angie Eng (Zenith Media Lounge)

## MAY

**TALKING ABOUT *LIVING INSIDE THE GRID***  
**Sat.3** 10:30AM-6PM  
 Symposium with panelists Manuel Delanda, Peter Halley, Laura Kurgan, Sean Snyder, and Susan Kozel  
 RSVP: 212-219-1222 x215 (Great Hall, Cooper Union)

**DIGITAL CULTURE EVENING**  
**Tues.6** 6-7PM  
 Conversation between Senior Curator Dan Cameron and artist Jun Nguyen-Hatsushiba (Zenith Media Lounge)

**JUN NGUYEN-HATSUSHIBA: MEMORIAL PROJECT VIETNAM OPENING RECEPTION**  
**Tues.6** 7-8PM  
 (Zenith Media Lounge)

**JUN NGUYEN-HATSUSHIBA OPENS**  
**Wed.7** 12PM  
 (Zenith Media Lounge)

**INSIDEART EVENT: *LIVING INSIDE THE GRID* STUDIO VISITS**  
**Wed.28** 6:30-8PM  
 A visit to the studios of a selection of artists presented in *Living Inside the Grid* for members at the Associate Level and above

## JUNE

***LIVING INSIDE THE GRID* CLOSES**  
**Sun.15**

***JUN NGUYEN-HATSUSHIBA* CLOSES**  
**Sun.29**

*The New Museum Calendar is subject to change. Visit [www.newmuseum.org](http://www.newmuseum.org) or call 212-219-1222 to confirm dates and times.*

*For more information about the benefits of becoming a Member, please call the Membership Department at 212-219-1222 x228*

## JULY

**MEMBERS' AND PATRONS' RECEPTION FOR *JOSÉ ANTONIO HERNÁNDEZ-DIEZ AND BLACK PRESIDENT***  
**Thu.10** 6:30-9PM  
 (all galleries)

***JOSÉ ANTONIO HERNÁNDEZ-DIEZ AND BLACK PRESIDENT* OPEN**  
**Fri.11** 12PM  
 (all galleries)

**CONVERSATION WITH THE ARTIST**  
**Fri.11** 6:30-8PM  
 Senior Curator Dan Cameron talks with José Antonio Hernández-Diez

**MEMBERS' TOUR**  
**Wed.16** 6:30-8PM  
 Walkthrough for members at the Friend level and above of *José Antonio Hernández-Diez*, led by Dan Cameron, and of *Black President*, led by Trevor Schoonmaker

**CONVERSATION WITH ARTISTS**  
**Thurs.17** 6:30-8PM  
 Guest curator Trevor Schoonmaker speaks with artists Olu Oguibe and Senam Okudzeto from *Black President*



1 Rico Gatson *Gun Play* (2001)  
 From *Living Inside the Grid*



**NO**  
**UNDER**  
**STANDING**  
**ANY**  
**TIME**



**NEW MUSEUM**  
of CONTEMPORARY ART