

WINTER/
SPRING 06

NEW MUSEUM NEWS

SUNDAY ▶

SUNDAY ▶

TUESDAY ▶

WEDNESDAY ▶

THURSDAY ▶

FRIDAY ▶

SATURDAY ▶

13:00 SUNDAY ▶

13:00 MONDAY ▶

13:00 TUESDAY ▶

13:00 WEDNESDAY ▶

13:00 THURSDAY ▶

13:00 FRIDAY ▶

13:00 SATURDAY ▶

12:00 SUNDAY ▶

12:00 MONDAY ▶

12:00 TUESDAY ▶

12:00 WEDNESDAY ▶

12:00 THURSDAY ▶

12:00 FRIDAY ▶

12:00 SATURDAY ▶

Communication

work in notebook

internet

telephone

socializing

CONTENTS

- 01 LETTER FROM THE DIRECTOR
- 02 NEW BUILDING NEWS
- 03 CAPITAL CAMPAIGN NEWS
- 04 EXHIBITION: ANDREA ZITTEL: *CRITICAL SPACE*
- 05 NEW CURATOR AND NEW INITIATIVES
- 06 MEMBER NEWS AND UPCOMING EVENTS
- 07 NEW MUSEUM STORE
- 08 MUSEUM EVENTS
- 09 TRUSTEES AND BENEFACTORS
- 10 CALENDAR

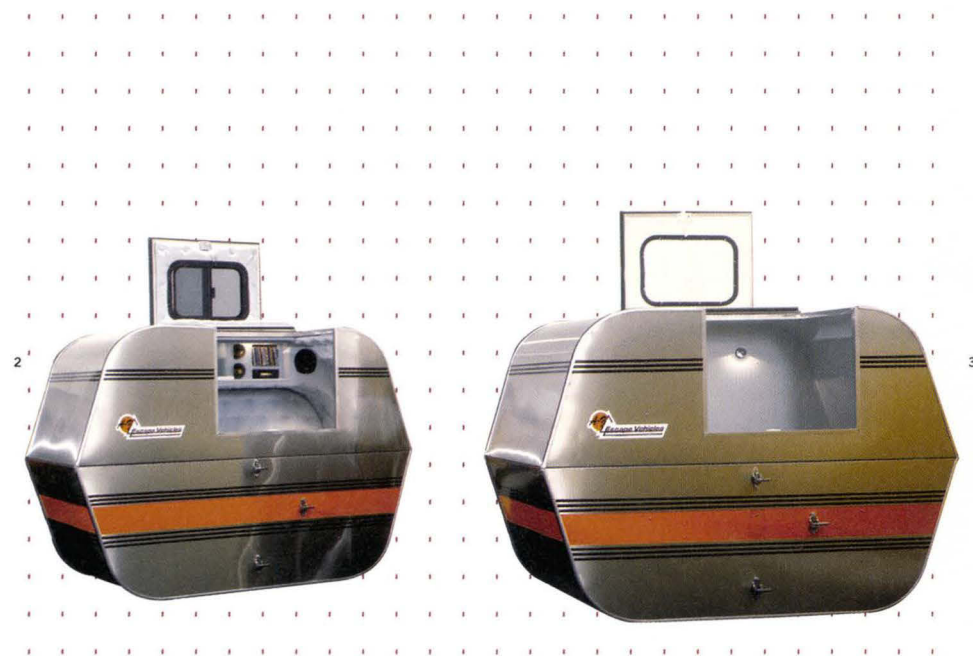


Front and back covers Andrea Zittel *Free Running Rhythms and Patterns, Version II* (2000). Detail

Olbricht Collection

1 Andrea Zittel *Prototype for A-Z Warm Chamber* (1993)

Private collection, courtesy of Galleria Massimo de Carlo, Milan



2 Andrea Zittel *A-Z Escape Vehicle* Owned and Customized by Andrea Rosen (1996)

3 Andrea Zittel *A-Z Escape Vehicle* Owned and Customized by Robert Shiffler (1996)

GENERAL INFORMATION

New Museum News is a publication
of the New Museum of Contemporary Art

NEW MUSEUM

New Museum of Contemporary Art / Chelsea
556 West 22nd Street (at 11th Avenue), New York, NY 10011

phone 212-219-1222

fax 212-431-5328

store 212-343-0460

email newmu@newmuseum.org

web www.newmuseum.org

Sign up for regular email updates: news@newmuseum.org

Museum hours

Tue-Sat noon-6PM

Thu noon-8PM*

Closed Sunday and Monday

Store hours

Tue-Sat noon-6PM

Thu noon-8PM

Directions

Subway C/E to West 23rd Street; 1/9 to 23rd Street

Bus M23 to 11th Avenue

Admission

\$6 general; \$3 students and seniors.

Free for members. Free for visitors 18 and under.

*Thursdays \$3 admission 6-8PM

Administrative Offices

210 Eleventh Avenue (between 24th and 25th Streets), 2nd fl.
New York, NY 10001

The New Museum of Contemporary Art receives general operating support from the Carnegie Corporation, the New York State Council on the Arts, the New York City Department of Cultural Affairs, JPMorgan Chase, and members of the New Museum.

Media Lounge exhibitions and public programs are supported by the Jerome Foundation in celebration of the Jerome Hill Centennial and the New York State Council on the Arts.

Design: Kstudio/Christiaan Kuypers, Noah Aronsson-Brown

01 LETTER FROM THE DIRECTOR



We stand at the threshold of a new era for the New Museum.

In October 2005, we broke ground for our new building on the Bowery, and construction is underway! We have made tremendous strides in our capital campaign over the past year, and have received some extraordinary campaign gifts: Eugenio López and La Colección Jumex have named a gallery; the Peter Jay Sharp Foundation has named the theater; and the City of New York—through the Office of the Mayor, the Department of Cultural Affairs and the City Council—awarded us significant new capital funds. Combined with earlier lead

gifts, these new major donations have helped us “get into the ground.” To everyone who has already contributed: I cannot thank you enough!

We also pay tribute to one of the New Museum’s guiding lights, Henry Luce III, who died in September. As President of the Museum’s Board of Trustees for over twenty years, Hank (as he was known to us) led our evolution from a scrappy alternative museum to a solid—but still risk-taking—institution. He was exceptionally devoted to the Museum and to the vision of our founding director, Marcia Tucker, and we are very grateful for his leadership and for the generosity of The Henry Luce Foundation. The Foundation is spearheading the naming of the Marcia Tucker Hall—the dynamic, ground floor public space of our new building. This is a perfect tribute to both Marcia and Hank, who worked tirelessly together to provide a solid and strong foundation for the institution.

While we await the completion of our new facility, we will continue our exhibition program at our temporary location in Chelsea. This January, we are proud to present Andrea Zittel: *Critical Space*, co-organized by the New Museum and the Contemporary Arts Museum Houston. This inspiring exhibition showcases the depth and range of one of the visionary artists of our time.

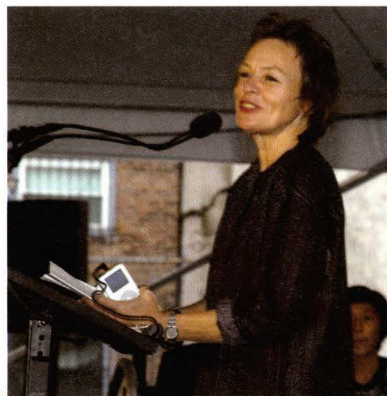
CAM Houston has been a wonderful partner to work with, and we are continuing to collaborate on future projects. Also this year, our Three M Project collaboration with the UCLA Hammer Museum and MCA Chicago resulted in three successful commissions, exhibitions and acquisitions of works by emerging international artists, and our partnership with Rhizome.org continues to flourish, with Lauren Cornell as the organization’s new Director. Finally, we have initiated another important partnership this year with New York University. We have transferred our renowned library to NYU, gaining recognition, access, resource sharing, and an ongoing graduate internship associated with our new study center.

Last but not least, the New Museum curatorial team is now complete, with the recent appointment of Laura Hoptman as Curator. She joins Richard Flood, Chief Curator; Trevor Smith, Curator; Anne Barlow, Curator of Education and Media Programs; and Dan Cameron, Senior Curator at Large to make ours one of the strongest curatorial teams for contemporary art in the world.

Lisa Phillips
Henry Luce III Director

GROUNDBREAKING!

On October 11, 2005, the New Museum celebrated the groundbreaking for our new building on the Bowery, scheduled to open in 2007! Over 200 special guests joined in this joyous celebration. The ceremony began with an original performance by **Laurie Anderson**, followed by remarks by **Kate D. Levin**, Commissioner, New York City Department of Cultural Affairs, and **Kent Barwick**, President of the Municipal Art Society.



1



2

The ceremony concluded with a traditional Japanese Shinto ritual—the Jichinsai—a non-religious, cultural ceremony performed before the start of construction projects to calm the Kami (divine spirit) of the Earth and secure its permission to build. The Jichinsai at the New Museum was conducted by Reverend **Mitsutaka Inui** of The International Shinto Foundation in New York. Henry Luce III Director **Lisa Phillips** and Board of Trustees President **Saul Dennison** continued the ceremony by cutting a blade of grass situated in a mound of earth. The ceremony was completed when architects **Kazuyo Sejima** and **Ryue Nishizawa** of SANAA and lead building donors **Mitzi and Warren Eisenberg** and **Susan and Leonard Feinstein** shoveled the freshly broken ground, a symbolic gesture to mark the beginning of construction.

Groundbreaking ceremony sponsored by



Altria

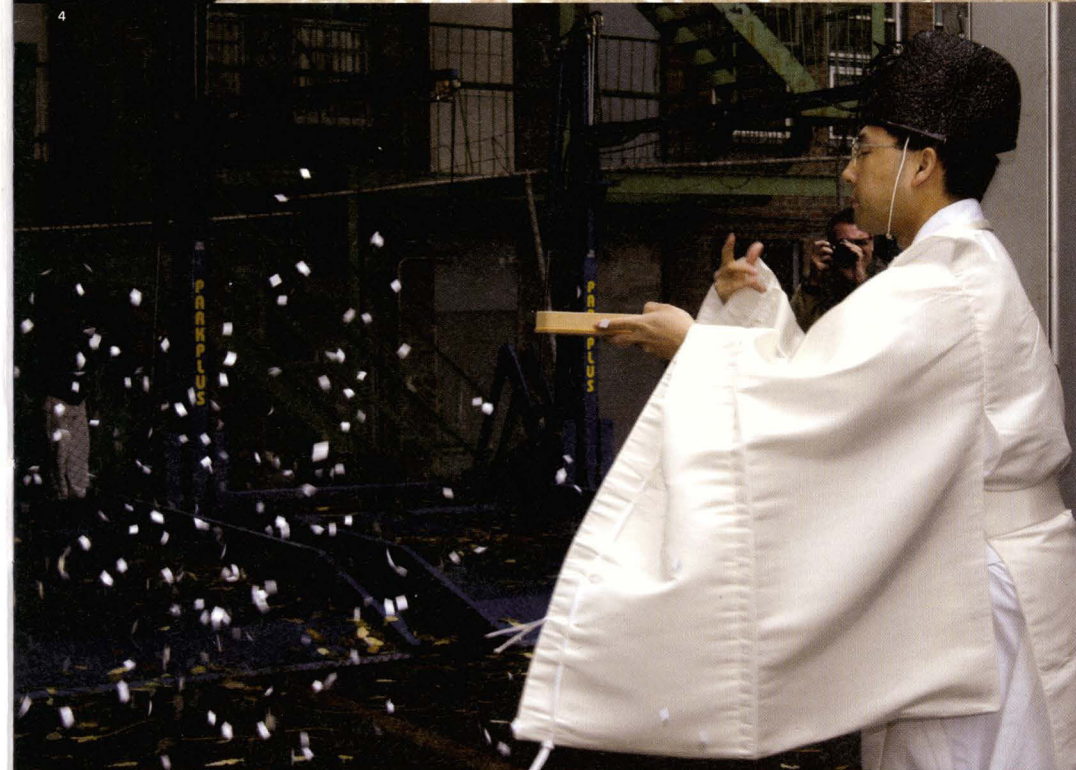
1 Artist Laurie Anderson opens the ceremony with an original performance piece.

2 Leonard and Susan Feinstein and Warren and Mitzi Eisenberg shovel the freshly broken ground.



3

4



3 Kazuyo Sejima and Ryue Nishizawa of SANAA are the first to shovel the earth after a blessing from the Shinto priest.

4 The Reverend Mitsutaka Inui performs the Jichinsai on the Bowery site.

NEW MUSEUM VISIONARIES

Thanks to everyone who has helped us reach the groundbreaking for the *new* New Museum by contributing to our Campaign! We would like to express special gratitude to our lead donors, whose truly extraordinary generosity and vision have been instrumental in bringing us to this momentous occasion:

MITZI AND WARREN EISENBERG
 SUSAN AND LEONARD FEINSTEIN
 CITY OF NEW YORK, OFFICE OF MAYOR
 MICHAEL R. BLOOMBERG
 NEW YORK CITY DEPARTMENT OF CULTURAL AFFAIRS
 NEW YORK CITY COUNCIL
 TOBY DEVAN LEWIS
 EUGENIO LÓPEZ AND LA COLECCIÓN JUMEX
 LOLA AND ALLEN GOLDRING
 DAKIS AND LIETTA JOANNOU
 JOAN AND CHARLES LAZARIUS
 THE HENRY LUCE FOUNDATION
 PETER JAY SHARP FOUNDATION
 SKADDEN, ARPS, SLATE, MEAGHER & FLOM LLC

KRESGE CHALLENGE

It is our pleasure to report that the New Museum has been awarded an extremely generous \$900,000 challenge grant by The Kresge Foundation. The Kresge Foundation is renowned for supporting only the most worthy and expertly managed capital projects, and for the rigor of its review process. We are very proud to be among The Kresge Foundation's 2005 grantees!

As a challenge, this award presents a compelling fundraising stimulus to close our campaign in the near term. We will only receive the \$900,000 if we succeed in raising the remaining funds needed to build the *new* New Museum by a fast-approaching deadline. We need everyone's help to achieve this urgent goal. If you have yet to contribute to the new building campaign—or if you are able to increase your gift—please consider taking advantage of this crucial opportunity to help us meet The Kresge Foundation's challenge.

There are still naming opportunities available, beginning at only \$30,000 per year for each of five years, but they are going fast! For just \$5,000 per year for each of five years, you will be recognized on the permanent campaign wall in our state-of-the-art Bowery facility. Every key patron of contemporary art belongs on this wall—including you! We gratefully accept contributions of any amount. To donate, or to learn more about the benefits of giving at a range of levels, please contact Campaign Manager Anya Lewis at 212-219-1222 x222 or alewis@newmuseum.org.



ANDREA ZITTEL CRITICAL SPACE

The highly anticipated exhibition **Andrea Zittel: Critical Space** brings together a large selection of Zittel's habitats, installations, drawings and documentation in an effort to illuminate the comprehensive manner in which the artist addresses the challenges of living and working in our contemporary world. Under the umbrella of *A-Z Administrative Services*, Zittel researches, designs and constructs her own domestic settings and objects. She explores and questions such basic human needs as emancipation, intimacy, security and comfort. Over 75 of these objects, created between 1991 and 2005, will be on view at the New Museum, encouraging visitors to question the status quo and engage more thoroughly with their environments and each other. Objects in the exhibition include *A-Z Escape Vehicles*, small transportable capsules customized by individuals seeking for their ideal place for introspection; *A-Z Uniforms*, functional and stylish single-outfit wardrobes designed to be worn daily for extended periods of time; and *A-Z Rough Furniture*, faux-rock landscapes substituted for indoor furniture meant to hide dirt and serve multiple functions. This exhibition is co-curated by New Museum Curator **Trevor Smith** and Contemporary Arts Museum Houston Curator **Paola Morsiani**. It will travel to the Albright-Knox Art Gallery, Buffalo; The Museum of Contemporary Art, Los Angeles; and the Vancouver Art Gallery, British Columbia.

PUBLIC PROGRAMS

02/02/06 **CONVERSATIONS WITH ARTISTS** 6:30-8PM

Andrea Zittel discusses her work with New Museum Curator **Trevor Smith**. This event will take place at New York University's Steinhardt School of Education, in the Einstein Auditorium at 34 Stuyvesant Street. Free!

BOOK CLUBS

The Andrea Zittel Book Club examines fiction and non-fiction books that are thematically related to Zittel's work. Each session focuses on a specific book and topics such as the construction of identity, designing environments, and the importance of landscape and place. Meetings are held in the New Museum Store, and refreshments are provided. Space is limited to 20. Admission: \$10 per program. RSVP to dpatane@newmuseum.org at least one week in advance.

02/08/06 **ABBOTT MILLER: LIFESTYLE AND DESIGN** 6:30-8PM

03/15/06 **ALIX STRAUSS: DEFINING CHARACTER** 6:30-8PM

04/05/06 **ELLEN LUPTON: PRODUCT FETISHES** 6:30-8PM

05/10/06 **ROBERT BEUKA: THE IMPORTANCE OF PLACE/
PERSONAL LANDSCAPES** 6:30-8PM

1 Andrea Zittel *A-Z 1994 Living Unit Customized for Eileen and Peter Norton* (1994)

Collections of Eileen Harris Norton and Peter Norton, Santa Monica

2 Andrea Zittel *A-Z Management and Maintenance Unit, Model 003* (1992)

Collection of Andrea Rosen, New York

SPECIAL INSIGHTS: GALLERY TALKS

Speakers from different disciplines, including lifestyle and fashion, architecture and design, and sustainable/mobile housing, give special insight to Zittel's work in a series of exhibition tours. Space is limited to 30. RSVP to dpatane@newmuseum.org. Tours are free with admission.

03/30/06 **JAQUELINE KHIU** 6:30-8PM

Tour with the Design Editor of *Surface Magazine*

04/20/06 **PAOLA ANTONELLI** 6:30-8PM

Tour with the Curator, Department of Architecture and Design, MoMA

05/18/06 **CAMERON SINCLAIR** 6:30-8PM

Tour with the Executive Director/Co-Founder, Architecture for Humanity

FAMILY DAYS

Family Days are recommended to children between 7 and 14 years old and are free for children. Admission fees apply for their adult companion. All attendees must RSVP to Cristina Scorza at 212-219-1222 x235 or cscorza@newmuseum.org.

02/25/06 **ATTIRE** 10-11:30AM

Make your own clothes and accessories, just like Andrea Zittel! Children and parents are invited to tour the exhibition at the New Museum and create clothing and accessories inspired by Zittel's series of *A-Z Uniforms*.

04/22/06 **BUILDING BLOCKS** 10-11:30AM

Think your apartment is small? Learn an alternative way to make the most of a small space through a study of Zittel's modular living units, then design your own!



Andrea Zittel: *Critical Space* is co-organized by the New Museum of Contemporary Art and the Contemporary Arts Museum Houston. The exhibition has been made possible by a grant from the National Endowment for the Arts, a Federal agency; the patrons, benefactors, and donors to the Contemporary Arts Museum Houston's Major Exhibition Fund; and the Peter Norton Family Foundation. The accompanying catalogue has been made possible by a grant from The Brown Foundation, Inc. of Houston with additional support from the Elizabeth Firestone Graham Foundation.

Media support provided by Robert Mondavi Winery.

1 Andrea Zittel *A-Z Breeding Unit for Averaging Eight Breeds* (1993)

The Museum of Contemporary Art, Los Angeles. Gift of Donatella and Jay Chiat.



LAURA HOPTMAN

We are happy to announce the appointment of **Laura Hoptman** as Curator. Laura was most recently Curator of Contemporary Art at the Carnegie Museum of Art, where she organized the 2004-05 Carnegie International. Prior to the Carnegie, she served as the Assistant Curator, Drawings, at the Museum of Modern Art, where she organized the critically acclaimed exhibition *Drawing Now: Eight Propositions*, an international survey of contemporary drawings, in addition to several well received *Projects* exhibitions. She was also one of a team of six curators who organized the first *Greater New York* exhibition at P.S.1 in 2000. Laura previously held positions at both the Whitney Museum of American Art and at the Bronx Museum of the Arts. Her passion and vision will be a tremendous asset to the Museum throughout this dynamic period of growth and change.

NEW MUSEUM LIBRARY
TO NEW YORK UNIVERSITY

In September, the New Museum announced the transfer of its Library to New York University, creating a new partnership between two downtown institutions. The transfer will facilitate research opportunities for scholars of modern and contemporary art by making the New Museum Library's holdings available to a wider audience, and will preserve a valuable collection of artist monographs, exhibition catalogues, periodicals, and artist archives spanning the post-World War II period to the present. The Resource Center in the New Museum's new building will have electronic links to the New Museum Library and the digital catalogue of the NYU Library System.

SAVE THE DATES!

The New Museum of Contemporary Art has an exciting spring schedule of events. Our recent events have sold out early, so become a member today to get advance information on purchasing tickets! For information or event tickets, please contact Mandy Kalajian, Special Events Coordinator, at 212-219-1222 x223 or mkalajian@newmuseum.org.

BEGINNING MARCH 7, 2006

NEW MUSEUM AT BERGDORF GOODMAN

The New Museum is teaming up once again with Bergdorf Goodman for a special collaboration. In celebration of Bergdorf Goodman's newly reopened Fifth Floor, designers and artists have teamed up to create limited edition fashions. Support the New Museum by purchasing fabulous creations by **Diane von Furstenberg** with **Anh Duong**, **Milly** with **Susan Dory**, **Tory Burch** with **Cameron Martin**, **Joie** with **Simone Shubuck**, and **Rachel Roy** with **Paul Henry Ramirez**.

SUNDAY APRIL 30, 2006

ANNUAL GALA AND LIVE AUCTION

The New Museum's Annual Gala and Live Auction is one of the highlights of the spring season, and a fun and exciting way to support the Museum. Visit www.newmuseum.org for more information and auction items.

ART STUDY TOURS

In October, a small group of Trustees traveled to the Pacific Northwest with New Museum Director **Lisa Phillips** and Curator **Trevor Smith**. The tour included visits to some of the most impressive private collections in the region, glass artist **Dale Chihuly**'s boathouse studio, the studios of three generations of Vancouver-based artists, and private tours of museums and collections.

Upcoming Art Study Tours include a visit in June 2006 to Germany to view museums, private collections and artists' studios. A second Art Study Tour is planned for the 2007 Shanghai Biennial.

Higher-level members are eligible to participate in our popular Art Study Tours to exhibitions, art fairs and private collections around the world. For more information, please contact Ben Whine, Associate Development Director, Membership, at 212-219-1222 x228.

INSIDE ART

The New Museum has instituted a new series of gallery tours for New Museum members. Members at the Associate (\$300) level and above are invited to join Joanne Leonhardt Cassullo Curatorial Fellow Sara Reisman on tours of her top choices of New York gallery exhibitions.

MEMBER DISCOUNTS

New Museum members at all levels are now eligible for an exclusive program of discounts from New York restaurants, shops, publications and more. This currently includes special offers from *Art Asia Pacific*, *Art Forum*, *Art on Paper*, Manhattan Mini Storage, Opus 22, and *Time Out New York*. Join today to take advantage of this ever-growing list of offers!

ORDER NOW!

To pre-order any of these titles before they sell out, e-mail: books@newmuseum.org



BUILD YOUR OWN MODULAR DWELLING KIT \$35

Inspired by prefab architecture, this 100-square-foot structure, made with simple materials, can be assembled in just over a week. The Build Your Own Modular Dwelling kit includes blue line prints, step-by-step instructions, and tips.

2006 LINEAR CALENDAR \$12

The linear calendar is founded on the idea that we imagine time in a linear way. Each calendar comes as a full year set with a separate strip for every month. The strips can be left in a linear format, or cut up and rearranged to fit your own visualization of time. The calendars are printed on green recycled paper using soy inks.



DPM: DISRUPTIVE PRINTED MATERIAL \$200

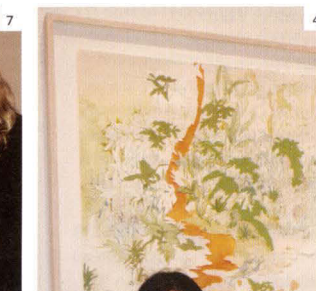
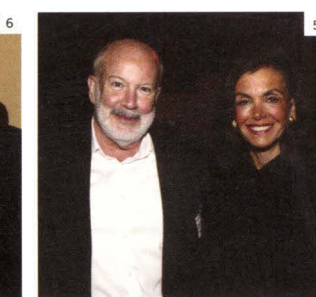
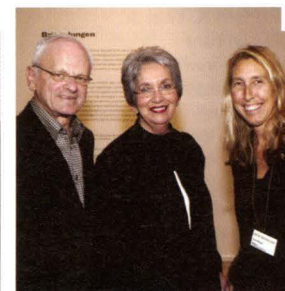
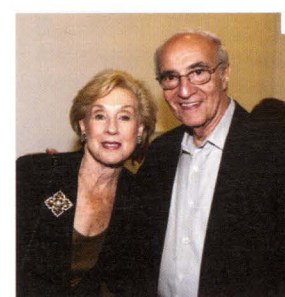
DPM is the culmination of a six-year exploration into the vast world of camouflage by Maharishi's Creative Director, Hardy Blechman. Divided into two books totaling 944 pages, DPM charts the history of camouflage from its roots in nature, to its adoption by the military, and to its current popularity and use in modern civilian culture. The two volumes contain more than 5,000 images, many previously unpublished, by some of the world's leading photographers, including images of camo-clad cultural icons such as David Beckham, Robert De Niro, U2 and Ali G.



Remember, New Museum members receive 10% off any purchase and a 20% discount on all New Museum merchandise.
*May not be used in conjunction with other offers.

FALL OPENINGS

New Museum patrons and members, sneaker fanatics and Altoids addicts alike gathered at the New Museum's Chelsea location on September 28, 2005, to celebrate the opening of *Brian Jungen and the Seventh Annual Altoids Curiously Strong Collection*. This event kicked off the fall season at the New Museum, and our last year in Chelsea.



At the opening of *Brian Jungen and the Seventh Annual Altoids Curiously Strong Collection*:

1 Brian Jungen and Vancouver Art Gallery Curator Daina Augaitis
2 Vancouver Art Gallery Director

Kathleen Bartels with Geoffrey Farmer and Joel Wachs
3 Artist Kimsooja and New Museum Adjunct Curator Yukie Kamiya
4 Artist Charlene Liu
5 New Museum Chief Curator Richard

Flood and Trustee Dianne Wallace
6 Trustees Elyn and Saul Dennison
7 Trustees Warren and Mitzi Eisenberg with New Museum Director Lisa Phillips
Photographs ©Patrick McMullan

TRUSTEES

Saul Dennison
President

James C.A. McClennen
Vice President and Treasurer

Paul T. Schnell
Vice President

Laura Skoler
Vice President

Dieter Bogner
James-Keith Brown
Henry M. Buhl

Jon Diamond
Mitzi Eisenberg
Susan Feinstein
William E. Ford

Stephanie French
John Friedman

Sunny Goldberg
Allen A. Goldring

Manuel E. Gonzalez
Ellie Gordon

Ruth Horowitz
Dakis Joannou

Michèle Gerber Klein
Jill Kraus

Joan Lazarus
Toby Devan Lewis

Eugenio López
Iris Z. Marden

Tim Nye
William A. Palmer

Steven M. Pesner
Nancy Portnoy

Ron Rosenzweig
Jerome L. Stern

Dianne Wallace
John S. Wotowicz

Marcia Tucker
Founding Director Emerita

Lisa Phillips
Henry Luce III Director
Ex-officio

PRODUCERS COUNCIL

Judi Caron
Joanne Leonhardt Cassullo
Rebecca and Martin Eisenberg
Eileen and Richard Ekstract
Suzanne and Howard Feldman
Carol and Arthur Goldberg

Lisa Ivorian Gray
and Hunter Clark Gray

Bruce C. Horten
Susan Hancock

Lillian Heidenberg
Maren Hensler

Bonnie and Bernard Hodes
Barbara Horowitz

Ellen Kern
Ken Kuchin and Bruce Anderson

Paul J. Leaman, Jr.
Rosina Lee Yue

and Bert A. Lies, Jr.
Jane Lombard

Scott J. Lorinsky
Carol McFadden

Byron Meyer
George P. Mills

Burton S. Minkoff
Kathleen O'Grady

Judith and Donald Rechler
Jennifer McSweeney

and Peter Reuss
June and Paul Schorr

Lyndley and Samuel Schwab
Kimberly and Tord Stallvik

Norah and Norman Stone
Wiesje and Jack van Hulst

Lee Weissman
Neda Young

BENEFACTORS

Support for the Museum's general operations and programs received between 07/01/05 and 10/31/05.

Akin, Gump, Strauss, Hauer & Feld
Altoids

Altria Group, Inc.
American Express

Milton and Sally Avery
Arts Foundation

Carnegie Corporation of New York
Con Edison

Elizabeth Firestone Graham
Foundation

Michael and Susan Hort
The Dorothea L. Leonhardt

Foundation

New York City Department
of Cultural Affairs
New York State Council
on the Arts
Leonard and Susan Nimoy
Peter Norton Family Foundation

WELCOME NEW MEMBERS

Patron

Barbara and Bruce Berger
Nathalie and Charles de Gunzburg
Wilma and Arthur Gelfand
Susan and Michael Hort
Shaun Caley Regen
Melissa Schiff Soros
and Robert Soros

New Group Dual/Institutional

Alessandra and Jonas Almgren
Collette Blanchard and John Tevis

New Group

Maria Antelman
Vittoria d'Aste-Surcouf
Nina del Rio
Joseph Kraeutler
Sarah E. Murkett
Ruthard C. Murphy
Lauren Shadford

Associate

303 Gallery
Roland J. Augustine
Helen and Peter Haje
Ada and Alex Katz
Dean Landew

Lawrence R. Luhring
Curt Marcus

Jane Nixon
Sally Morgan Oberbeck

and Jay Lehman Horowitz
Robert Ouimette

Jean Pagliuso and Tommy Cohen

JANUARY

PRODUCERS COUNCIL DAY
Sat.21 10AM-4PM

PATRONS' & MEMBERS' RECEPTIONS
FOR ANDREA ZITTEL: *CRITICAL SPACE*
Wed.25 6-10:30PM

ANDREA ZITTEL: *CRITICAL SPACE*
OPENS
Thu.26 12PM

FEBRUARY

MEMBERS' TOUR OF ANDREA ZITTEL:
CRITICAL SPACE
Wed.1 6:30-8PM

CONVERSATIONS WITH ARTISTS:
ANDREA ZITTEL
Thu.2 6:30-8PM
Conversation between curator
Trevor Smith and Andrea Zittel at
NYU Steinhardt School of
Education, Einstein Auditorium,
34 Stuyvesant Street.

ANDREA ZITTEL BOOK CLUB:
LIFESTYLE AND DESIGN
Wed.8 6:30-8PM
Led by designer Abbott Miller.
RSVP to dpatane@newmuseum.org
or 212-219-1222 x215 by
February 1. Cost: \$10.

ANDREA ZITTEL FAMILY DAY: ATTIRE
Sat.25 10-11:30AM
RSVP to cszorza@newmuseum.org
or 212-219-1222 x235.

MARCH

NEW MUSEUM BENEFIT AT
BERGDORF GOODMAN
Tue.7 9PM-12AM

ANDREA ZITTEL BOOK CLUB:
DEFINING CHARACTER
Wed.15 6:30-8PM
Led by author Alix Strauss. RSVP
to dpatane@newmuseum.org or
212-219-1222 x215 by March 1.
Cost: \$10.

PRODUCERS COUNCIL DAY
Sat.25 10AM-4PM

SPECIAL INSIGHTS: GALLERY TALKS
Thu.30 6:30-8PM
Led by *Surface* Magazine Design
Editor Jacqueline Khiu.

APRIL

ANDREA ZITTEL BOOK CLUB:
PRODUCT FETISHES
Wed.5 6:30-8PM
Led by designer Ellen Lupton.
RSVP to dpatane@newmuseum.org
or 212-219-1222 x215 by March
29. Cost: \$10.

SPECIAL INSIGHTS: GALLERY TALKS
Thu.20 6:30-8PM
Led by MoMA Architecture and
Design Curator Paola Antonelli.

ANDREA ZITTEL FAMILY DAY:
BUILDING BLOCKS
Sat.22 10-11:30AM
RSVP to cszorza@newmuseum.org

ANNUAL GALA AND LIVE AUCTION
Sun.30 6PM-11PM

MAY

ANDREA ZITTEL BOOK CLUB: THE
IMPORTANCE OF PLACE/PERSONAL
LANDSCAPES
Wed.10 6:30-8PM
Led by English Professor Robert
Beuka. RSVP to dpatane@newmu-
seum.org or 212-219-1222 x215
by May 3. Cost: \$10.

PRODUCERS COUNCIL DAY
Sat.13 10AM-4PM

SPECIAL INSIGHTS: GALLERY TALKS
Thu.18 6:30-8PM
Led by Architecture for Humanity
Executive Director/Co-Founder
Cameron Sinclair.

ANDREA ZITTEL: *CRITICAL SPACE*
CLOSES
Sat.27 6PM

*The New Museum Calendar
is subject to change. Visit
www.newmuseum.org or call
212-219-1222 to confirm
dates and times.*